

Product datasheet

Anti-GSTM2 antibody ab62550

[3 Images](#)

Overview

Product name	Anti-GSTM2 antibody
Description	Rabbit polyclonal to GSTM2
Host species	Rabbit
Tested applications	Suitable for: WB, IHC-P
Species reactivity	Reacts with: Human Predicted to work with: Monkey
Immunogen	Synthetic peptide: TQSNAILRYI ARKHNLCGES EKEQIREIDIL ENQFMDSRMQ LAKLCYDPDF (Human) Run BLAST with ExPASy Run BLAST with NCBI
Positive control	Fetal liver cell lysate or human muscle tissue.

Properties

Form	Liquid
Storage instructions	Shipped at 4°C. Upon delivery aliquot and store at -20°C or -80°C. Avoid repeated freeze / thaw cycles.
Storage buffer	Preservative: 0.09% Sodium azide Constituents: 2% Sucrose, PBS
Purity	Immunogen affinity purified
Clonality	Polyclonal
Isotype	IgG

Applications

Our [Abpromise guarantee](#) covers the use of **ab62550** in the following tested applications.

The application notes include recommended starting dilutions; optimal dilutions/concentrations should be determined by the end user.

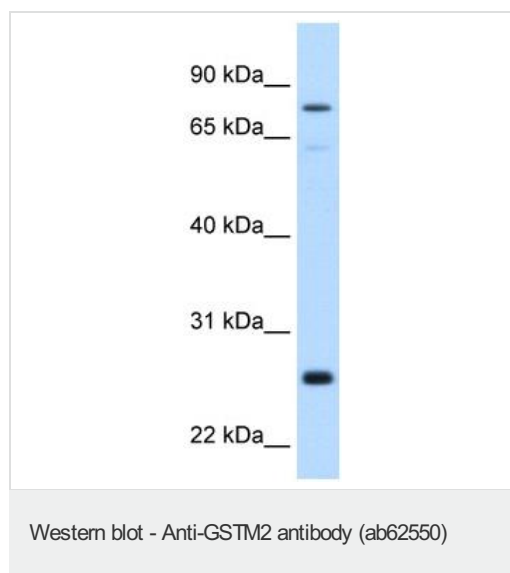
Application	Abreviews	Notes
WB		Use a concentration of 0.25 µg/ml. Detects a band of approximately 26 kDa (predicted molecular weight: 26 kDa). Good results were obtained when blocked with 5% non-fat dry milk in 0.05% PBS-T.

Application	Abreviews	Notes
IHC-P		Use a concentration of 4 - 8 µg/ml.

Target

Function	Conjugation of reduced glutathione to a wide number of exogenous and endogenous hydrophobic electrophiles.
Tissue specificity	Muscle.
Sequence similarities	Belongs to the GST superfamily. Mu family. Contains 1 GST C-terminal domain. Contains 1 GST N-terminal domain.
Cellular localization	Cytoplasm.

Images



Anti-GSTM2 antibody (ab62550) at 0.25 µg/ml + Fetal liver cell lysate at 10 µg

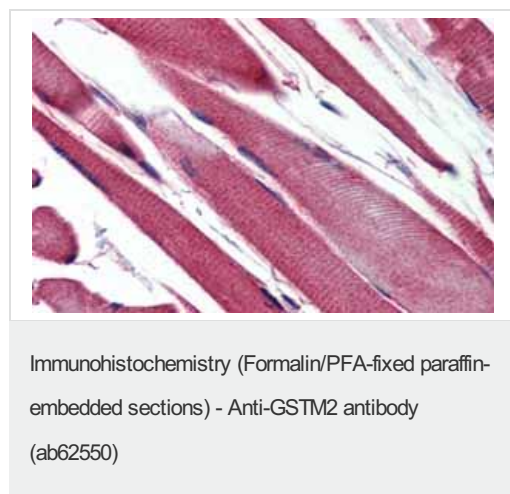
Secondary

HRP conjugated anti-Rabbit IgG (1/50,000 - 1/100,000)

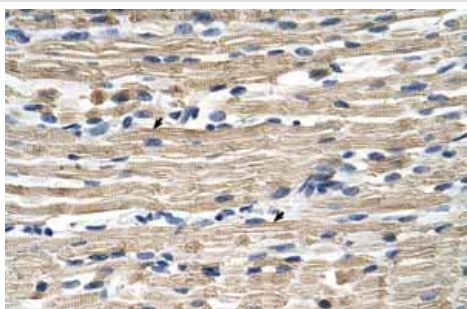
Predicted band size: 26 kDa

Observed band size: 26 kDa

Additional bands at: 80 kDa. We are unsure as to the identity of these extra bands.



Immunohistochemistry of Human Skeletal Muscle lysate tissue at an antibody concentration of 5.0µg/ml using anti-GSTM2 antibody (ab62550)



Immunohistochemistry (Formalin/PFA-fixed paraffin-embedded sections) analysis of human muscle tissue labelling GSTM2 with ab62550 at 4-8µg/ml. Arrows indicate positively labelled skeletal muscle cells. Magnification: 400X.

Immunohistochemistry (Formalin/PFA-fixed paraffin-embedded sections) - Anti-GSTM2 antibody (ab62550)

Please note: All products are "FOR RESEARCH USE ONLY AND ARE NOT INTENDED FOR DIAGNOSTIC OR THERAPEUTIC USE"

Our Abpromise to you: Quality guaranteed and expert technical support

- Replacement or refund for products not performing as stated on the datasheet
- Valid for 12 months from date of delivery
- Response to your inquiry within 24 hours
- We provide support in Chinese, English, French, German, Japanese and Spanish
- Extensive multi-media technical resources to help you
- We investigate all quality concerns to ensure our products perform to the highest standards

If the product does not perform as described on this datasheet, we will offer a refund or replacement. For full details of the Abpromise, please visit <https://www.abcam.com/abpromise> or contact our technical team.

Terms and conditions

- Guarantee only valid for products bought direct from Abcam or one of our authorized distributors