

## Product datasheet

# Anti-L3MBTL2 antibody ab64422

1 Image

### Overview

<b>Product name</b>	Anti-L3MBTL2 antibody
<b>Description</b>	Rabbit polyclonal to L3MBTL2
<b>Host species</b>	Rabbit
<b>Tested applications</b>	<b>Suitable for:</b> WB
<b>Species reactivity</b>	<b>Reacts with:</b> Human <b>Predicted to work with:</b> Horse, Cow, Cat, Dog, Pig
<b>Immunogen</b>	Synthetic peptide: LLEDDPQGAR KISSEPVPGE IIAVRVKEEH LDVASPKAS SPELPVSVEN, corresponding to a region within C terminal amino acids 649-698 of Human L3MBTL2 <a href="#">Run BLAST with ExPASy</a> <a href="#">Run BLAST with NCBI</a>
<b>Positive control</b>	Transfected 293T cell lysate

### Properties

<b>Form</b>	Liquid
<b>Storage instructions</b>	Shipped at 4°C. Upon delivery aliquot and store at -20°C. Avoid freeze / thaw cycles.
<b>Storage buffer</b>	Preservative: None Constituents: 2% Sucrose, PBS
<b>Purity</b>	Protein A purified
<b>Clonality</b>	Polyclonal
<b>Isotype</b>	IgG

### Applications

Our [Abpromise guarantee](#) covers the use of **ab64422** in the following tested applications.

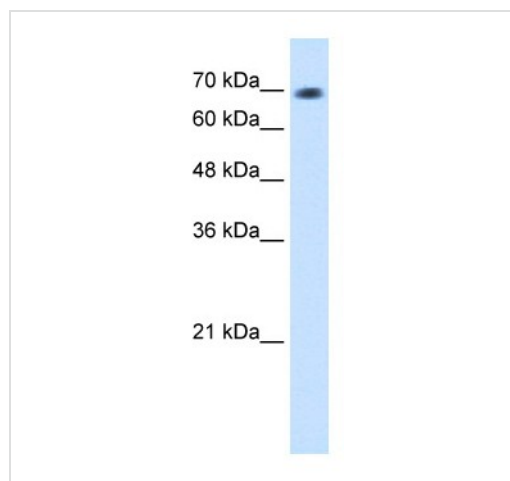
The application notes include recommended starting dilutions; optimal dilutions/concentrations should be determined by the end user.

Application	Abreviews	Notes
WB		Use a concentration of 1.25 µg/ml. Detects a band of approximately 70 kDa (predicted molecular weight: 79 kDa). Good results were obtained when blocked with 5% non-fat dry milk in 0.05% PBS-T.

## Target

<b>Function</b>	Putative Polycomb group (PcG) protein. PcG proteins maintain the transcriptionally repressive state of genes, probably via a modification of chromatin, rendering it heritably changed in its expressibility. Its association with a chromatin-remodeling complex suggests that it may contribute to prevent expression of genes that trigger the cell into mitosis. Binds to monomethylated and dimethylated 'Lys-20' on histone H4. Binds histone H3 peptides that are monomethylated or dimethylated on 'Lys-4', 'Lys-9' or 'Lys-27'.
<b>Sequence similarities</b>	Contains 1 FCS-type zinc finger. Contains 4 MBT repeats.
<b>Cellular localization</b>	Nucleus.

## Images



Western blot - Anti-L3MBTL2 antibody (ab64422)

Anti-L3MBTL2 antibody (ab64422) at 1.25  $\mu$ g/ml + Transfected 293T cell lysate at 10  $\mu$ g

### Secondary

HRP conjugated anti-Rabbit IgG at 1/50000 dilution

**Predicted band size:** 79 kDa

**Observed band size:** 70 kDa

Diluted in 5% skim milk / PBS buffer, gel concentration 12%

**Please note:** All products are "FOR RESEARCH USE ONLY AND ARE NOT INTENDED FOR DIAGNOSTIC OR THERAPEUTIC USE"

## Our Abpromise to you: Quality guaranteed and expert technical support

- Replacement or refund for products not performing as stated on the datasheet
- Valid for 12 months from date of delivery
- Response to your inquiry within 24 hours
- We provide support in Chinese, English, French, German, Japanese and Spanish
- Extensive multi-media technical resources to help you
- We investigate all quality concerns to ensure our products perform to the highest standards

If the product does not perform as described on this datasheet, we will offer a refund or replacement. For full details of the Abpromise, please visit <https://www.abcam.com/abpromise> or contact our technical team.

## Terms and conditions

---

- Guarantee only valid for products bought direct from Abcam or one of our authorized distributors