


Product datasheet

Anti-CARD10 antibody ab64535

1 Image

Overview

<b>Product name</b>	Anti-CARD10 antibody
<b>Description</b>	Rabbit polyclonal to CARD10
<b>Host species</b>	Rabbit
<b>Tested applications</b>	<b>Suitable for:</b> ELISA, WB, IP
<b>Species reactivity</b>	<b>Reacts with:</b> Mouse <b>Predicted to work with:</b> Rat, Dog, Monkey 
<b>Immunogen</b>	Synthetic peptide corresponding to an internal portion of mouse CARD10.
<b>Positive control</b>	NIH/3T3 whole cell lysate.

Properties

<b>Form</b>	Liquid
<b>Storage instructions</b>	Shipped at 4°C. Store at +4°C.
<b>Storage buffer</b>	Preservative: 0.05% Sodium Azide Constituents: PBS, pH 7.4
<b>Purity</b>	Immunogen affinity purified
<b>Clonality</b>	Polyclonal
<b>Isotype</b>	IgG

Applications

Our [Abpromise guarantee](#) covers the use of **ab64535** in the following tested applications.

The application notes include recommended starting dilutions; optimal dilutions/concentrations should be determined by the end user.

Application	Abreviews	Notes
ELISA		
WB		
IP		

## Application notes

ELISA: Use at a concentration of 0.1 - 1 µg/ml.

IP: Use 3 - 5µg/extract of 10<sup>7</sup> cells.

WB: Use at a concentration of 0.5 - 2.0 µg/ml. Detects a band of approximately 120 kDa (predicted molecular weight: 116 kDa).

Not yet tested in other applications.

Optimal dilutions/concentrations should be determined by the end user.

## Target

### Function

Activates NF-kappa-B via BCL10 and IKK.

### Tissue specificity

Detected in adult heart, kidney and liver; lower levels in intestine, placenta, muscle and lung. Also found in fetal lung, liver and kidney.

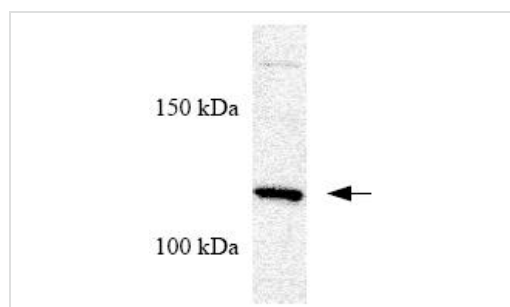
### Sequence similarities

Contains 1 CARD domain.

### Cellular localization

Cytoplasm.

## Images



Western blot - Anti-CARD10 antibody (ab64535)

Anti-CARD10 antibody (ab64535) at 1/200 dilution + NIH/3T3 whole cell lysate at 15 µg

**Predicted band size:** 116 kDa

**Observed band size:** 120 kDa

**Please note:** All products are "FOR RESEARCH USE ONLY AND ARE NOT INTENDED FOR DIAGNOSTIC OR THERAPEUTIC USE"

## Our Abpromise to you: Quality guaranteed and expert technical support

- Replacement or refund for products not performing as stated on the datasheet
- Valid for 12 months from date of delivery
- Response to your inquiry within 24 hours
- We provide support in Chinese, English, French, German, Japanese and Spanish
- Extensive multi-media technical resources to help you
- We investigate all quality concerns to ensure our products perform to the highest standards

If the product does not perform as described on this datasheet, we will offer a refund or replacement. For full details of the Abpromise, please visit <https://www.abcam.com/abpromise> or contact our technical team.

## Terms and conditions

---

- Guarantee only valid for products bought direct from Abcam or one of our authorized distributors