

Product datasheet

Anti-AKAP5 antibody ab64851

2 Images

Overview

Product name	Anti-AKAP5 antibody
Description	Rabbit polyclonal to AKAP5
Host species	Rabbit
Specificity	ab64851 detects endogenous levels of total AKAP5 protein.
Tested applications	Suitable for: WB, ICC/IF, ELISA
Species reactivity	Reacts with: Human
Immunogen	Synthetic peptide from the N-terminal region of human AKAP5.
Positive control	Extracts from HepG2 cells, HeLa cells and COLO205 cells. HeLa cells.

Properties

Form	Liquid
Storage instructions	Shipped at 4°C. Store at -20°C. Stable for 12 months at -20°C.
Storage buffer	Preservative: 0.02% Sodium Azide Constituents: 50% Glycerol, PBS (without Mg ²⁺ and Ca ²⁺), 150mM Sodium chloride, pH 7.4
Purity	Immunogen affinity purified
Clonality	Polyclonal
Isotype	IgG

Applications

Our [Abpromise guarantee](#) covers the use of **ab64851** in the following tested applications.

The application notes include recommended starting dilutions; optimal dilutions/concentrations should be determined by the end user.

Application	Abreviews	Notes
WB		1/500 - 1/1000. Detects a band of approximately 47 kDa (predicted molecular weight: 47 kDa).
ICC/IF		1/500 - 1/1000.
ELISA		1/10000.

Target

Function

May anchor the PKA protein to cytoskeletal and/or organelle-associated proteins, targeting the signal carried by cAMP to specific intracellular effectors. Association with to the beta2-adrenergic receptor (beta2-AR) not only regulates beta2-AR signaling pathway, but also the activation by PKA by switching off the beta2-AR signaling cascade.

Tissue specificity

Predominantly in the cerebral cortex and the postsynaptic densities of the forebrain, and to a lesser extent in adrenal medulla, lung and anterior pituitary.

Sequence similarities

Contains 1 AKAP domain.

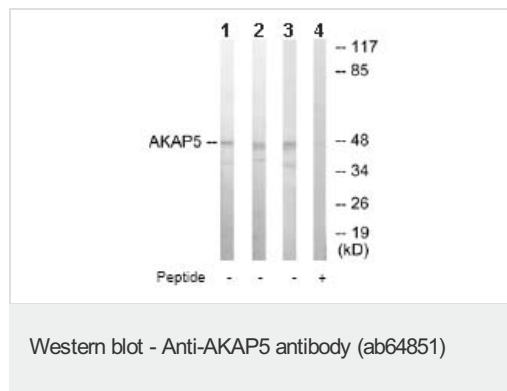
Domain

R11-alpha binding site, predicted to form an amphipathic helix, could participate in protein-protein interactions with a complementary surface on the R-subunit dimer.

Cellular localization

Membrane. Associated with particulate fractions.

Images



All lanes : Anti-AKAP5 antibody (ab64851) at 1/500 dilution

Lane 1 : Extracts from HepG2 cells

Lane 2 : Extracts from HeLa cells

Lane 3 : Extracts from COLO205 cells

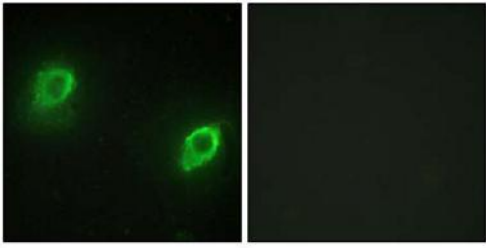
Lane 4 : Extracts from COLO205 cells with immunising peptide at 10 µg

Lysates/proteins at 30 µg per lane.

Predicted band size: 47 kDa

Observed band size: 47 kDa

Additional bands at: 40 kDa. We are unsure as to the identity of these extra bands.



Peptide - +

Immunocytochemistry/ Immunofluorescence - Anti-AKAP5 antibody (ab64851)

Immunofluorescence analysis of HeLa cells using AKAP5 antibody (ab64851), at 1/500 dilution, in the absence (left) or presence (right) of immunising peptide.

Please note: All products are "FOR RESEARCH USE ONLY AND ARE NOT INTENDED FOR DIAGNOSTIC OR THERAPEUTIC USE"

Our Abpromise to you: Quality guaranteed and expert technical support

- Replacement or refund for products not performing as stated on the datasheet
- Valid for 12 months from date of delivery
- Response to your inquiry within 24 hours
- We provide support in Chinese, English, French, German, Japanese and Spanish
- Extensive multi-media technical resources to help you
- We investigate all quality concerns to ensure our products perform to the highest standards

If the product does not perform as described on this datasheet, we will offer a refund or replacement. For full details of the Abpromise, please visit <https://www.abcam.com/abpromise> or contact our technical team.

Terms and conditions

- Guarantee only valid for products bought direct from Abcam or one of our authorized distributors