


Product datasheet

Anti-BCKDH kinase antibody ab65027

2 Images

Overview

Product name	Anti-BCKDH kinase antibody
Description	Rabbit polyclonal to BCKDH kinase
Host species	Rabbit
Specificity	ab65027 detects endogenous levels of total BCKDH kinase protein.
Tested applications	Suitable for: ELISA, ICC/IF, WB
Species reactivity	Reacts with: Human Predicted to work with: Mouse, Rat 
Immunogen	Synthetic peptide derived from an internal sequence of human BCKDH kinase
Positive control	293 and Jurkat cell extracts and HeLa cells.

Properties

Form	Liquid
Storage instructions	Shipped at 4°C. Store at -20°C. Stable for 12 months at -20°C.
Storage buffer	Preservative: 0.02% Sodium Azide Constituents: 50% Glycerol, PBS (without Mg ²⁺ and Ca ²⁺), 150mM Sodium chloride, pH 7.4
Purity	Immunogen affinity purified
Clonality	Polyclonal
Isotype	IgG

Applications

Our [Abpromise guarantee](#) covers the use of **ab65027** in the following tested applications.

The application notes include recommended starting dilutions; optimal dilutions/concentrations should be determined by the end user.

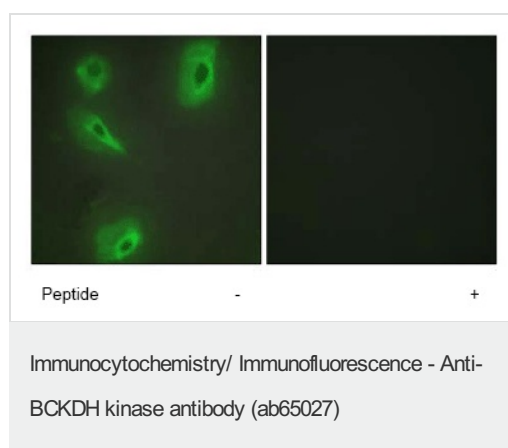
Application	Abreviews	Notes
ELISA		1/20000.
ICC/IF		1/500 - 1/1000.

Application	Abreviews	Notes
WB		1/500 - 1/1000. Detects a band of approximately 46 kDa (predicted molecular weight: 46 kDa).

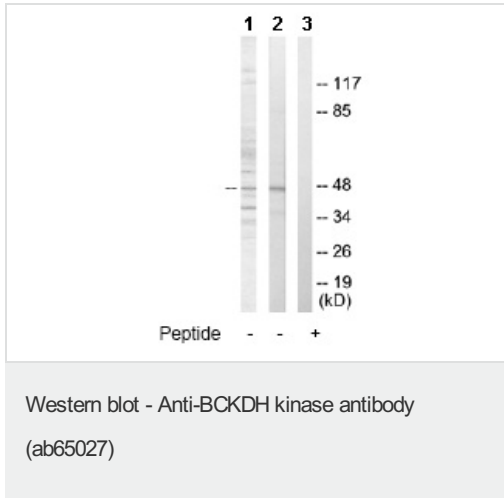
Target

Function	Catalyzes the phosphorylation and inactivation of the branched-chain alpha-ketoacid dehydrogenase complex, the key regulatory enzyme of the valine, leucine and isoleucine catabolic pathways. Key enzyme that regulate the activity state of the BCKD complex.
Tissue specificity	Ubiquitous.
Sequence similarities	Belongs to the PDK/BCKDK protein kinase family. Contains 1 histidine kinase domain.
Post-translational modifications	Autophosphorylated.
Cellular localization	Mitochondrion matrix.

Images



ab65027 at 1/500 - 1/1000 dilution staining BCKDH kinase in HeLa cells by Immunofluorescence, in the absence (-) or presence (+) of the immunising peptide.



All lanes : Anti-BCKDH kinase antibody (ab65027) at 1/500 dilution

Lane 1 : 293 cell extract

Lane 2 : Jurkat cell extract

Lane 3 : Jurkat cell extract with immunising peptide

Predicted band size: 46 kDa

Observed band size: 46 kDa

The amount of positive control loading for the WB is 5-30 ug of total protein. The amount of the peptide for the WB is 5-10 ug.

Please note: All products are "FOR RESEARCH USE ONLY AND ARE NOT INTENDED FOR DIAGNOSTIC OR THERAPEUTIC USE"

Our Abpromise to you: Quality guaranteed and expert technical support

- Replacement or refund for products not performing as stated on the datasheet
- Valid for 12 months from date of delivery
- Response to your inquiry within 24 hours
- We provide support in Chinese, English, French, German, Japanese and Spanish
- Extensive multi-media technical resources to help you
- We investigate all quality concerns to ensure our products perform to the highest standards

If the product does not perform as described on this datasheet, we will offer a refund or replacement. For full details of the Abpromise, please visit <https://www.abcam.com/abpromise> or contact our technical team.

Terms and conditions

- Guarantee only valid for products bought direct from Abcam or one of our authorized distributors