


## Product datasheet

# Anti-Cbx6 antibody ab65148

1 Image

### Overview

<b>Product name</b>	Anti-Cbx6 antibody
<b>Description</b>	Rabbit polyclonal to Cbx6
<b>Host species</b>	Rabbit
<b>Specificity</b>	ab65148 detects endogenous levels of total Cbx6 protein.
<b>Tested applications</b>	<b>Suitable for:</b> ELISA, WB
<b>Species reactivity</b>	<b>Reacts with:</b> Human <b>Predicted to work with:</b> Mouse, Rat 
<b>Immunogen</b>	Synthetic peptide derived from an internal sequence of human Cbx6
<b>Positive control</b>	293 and HepG2 cell extracts.

### Properties

<b>Form</b>	Liquid
<b>Storage instructions</b>	Shipped at 4°C. Store at -20°C. Stable for 12 months at -20°C.
<b>Storage buffer</b>	Preservative: 0.02% Sodium Azide Constituents: 50% Glycerol, PBS, 150mM Sodium chloride, pH 7.4
<b>Purity</b>	Immunogen affinity purified
<b>Clonality</b>	Polyclonal
<b>Isotype</b>	IgG

### Applications

Our [Abpromise guarantee](#) covers the use of **ab65148** in the following tested applications.

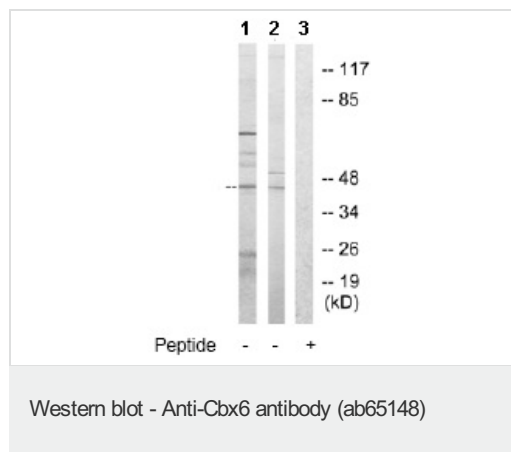
The application notes include recommended starting dilutions; optimal dilutions/concentrations should be determined by the end user.

Application	Abreviews	Notes
ELISA		1/20000.
WB		1/500 - 1/1000. Detects a band of approximately 44 kDa (predicted molecular weight: 44 kDa).

## Target

<b>Function</b>	Involved in maintaining the transcriptionally repressive state of genes. Modifies chromatin, rendering it heritably changed in its expressibility.
<b>Sequence similarities</b>	Contains 1 chromo domain.
<b>Cellular localization</b>	Nucleus.

## Images



**All lanes :** Anti-Cbx6 antibody (ab65148) at 1/500 dilution

**Lane 1 :** 293 cell extract

**Lane 2 :** HepG2 cell extract

**Lane 3 :** HepG2 cell extract with immunising peptide at 5 µg

Lysates/proteins at 5 µg per lane.

**Predicted band size:** 44 kDa

**Observed band size:** 44 kDa

**Additional bands at:** 25 kDa, 70 kDa. We are unsure as to the identity of these extra bands.

**Please note:** All products are "FOR RESEARCH USE ONLY AND ARE NOT INTENDED FOR DIAGNOSTIC OR THERAPEUTIC USE"

## Our Abpromise to you: Quality guaranteed and expert technical support

- Replacement or refund for products not performing as stated on the datasheet
- Valid for 12 months from date of delivery
- Response to your inquiry within 24 hours
- We provide support in Chinese, English, French, German, Japanese and Spanish
- Extensive multi-media technical resources to help you
- We investigate all quality concerns to ensure our products perform to the highest standards

If the product does not perform as described on this datasheet, we will offer a refund or replacement. For full details of the Abpromise, please visit <https://www.abcam.com/abpromise> or contact our technical team.

## Terms and conditions

- Guarantee only valid for products bought direct from Abcam or one of our authorized distributors