


## Product datasheet

# Anti-p39 antibody ab65210

[1 Abreviews](#) [2 Images](#)

### Overview

<b>Product name</b>	Anti-p39 antibody
<b>Description</b>	Rabbit polyclonal to p39
<b>Host species</b>	Rabbit
<b>Tested applications</b>	<b>Suitable for:</b> WB, ELISA, ICC/IF
<b>Species reactivity</b>	<b>Reacts with:</b> Human <b>Predicted to work with:</b> Mouse 
<b>Immunogen</b>	A synthetic peptide derived from an internal region of human p39.
<b>Positive control</b>	Extracts from HUVEC cells

### Properties

<b>Form</b>	Liquid
<b>Storage instructions</b>	Shipped at 4°C. Store at -20°C. Stable for 12 months at -20°C.
<b>Storage buffer</b>	Preservative: 0.02% Sodium Azide Constituents: 50% Glycerol, PBS (without Ca <sup>2+</sup> and Mg <sup>2+</sup> ), 150mM Sodium chloride, pH 7.4
<b>Purity</b>	Immunogen affinity purified
<b>Clonality</b>	Polyclonal
<b>Isotype</b>	IgG

### Applications

Our [Abpromise guarantee](#) covers the use of **ab65210** in the following tested applications.

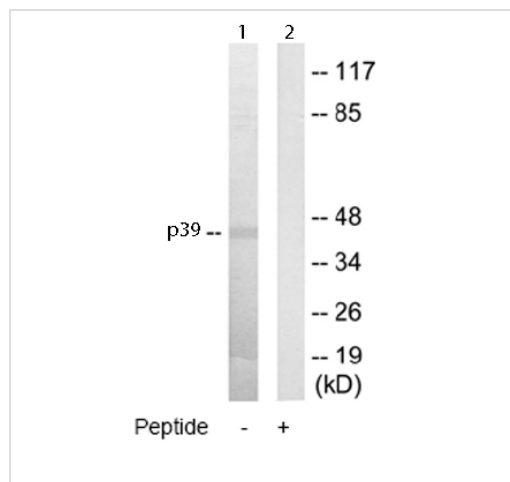
The application notes include recommended starting dilutions; optimal dilutions/concentrations should be determined by the end user.

Application	Abreviews	Notes
WB		1/500 - 1/1000. Detects a band of approximately 39 kDa (predicted molecular weight: 39 kDa).
ELISA		1/20000.
ICC/IF		Use a concentration of 5 µg/ml.

## Target

<b>Function</b>	Activator of CDK5/TPKII.
<b>Tissue specificity</b>	Brain and neuron specific.
<b>Sequence similarities</b>	Belongs to the cyclin-dependent kinase 5 activator family.

## Images



Western blot - Anti-p39 antibody (ab65210)

**All lanes :** Anti-p39 antibody (ab65210) at 1/500 dilution

**Lane 1 :** Extracts from HUVEC cells

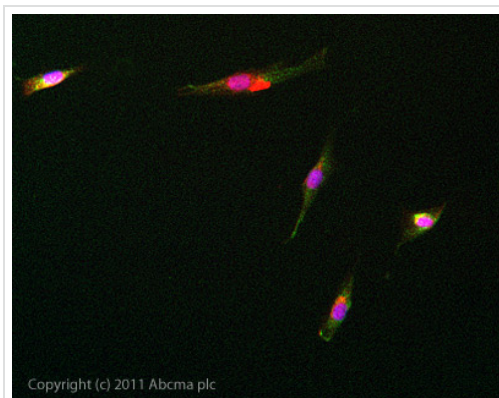
**Lane 2 :** Extracts from HUVEC cells, plus immunising peptide

**Predicted band size:** 39 kDa

**Observed band size:** 39 kDa

The amount of positive control loading for the WB is 5-30 ug of total protein.

The amount of the peptide for the WB is 5-10 ug.



Immunocytochemistry/ Immunofluorescence - Anti-p39 antibody (ab65210)

ICC/IF image of ab65210 stained SKNSH cells. The cells were 4% PFA fixed (10mins) and then incubated in 1%BSA / 10% normal goat serum / 0.3M glycine in 0.1% PBS-Tween for 1h to permeabilise the cells and block non-specific protein-protein interactions. The cells were then incubated with the antibody (ab65210, 5µg/ml) overnight at +4°C. The secondary antibody (green) was [ab96899](#) DyLight 488 goat anti-rabbit IgG (H+L) used at a 1/250 dilution for 1h. Alexa Fluor® 594 WGA was used to label plasma membranes (red) at a 1/200 dilution for 1h. DAPI was used to stain the cell nuclei (blue) at a concentration of 1.43µM.

---

## **Our Abpromise to you: Quality guaranteed and expert technical support**

---

- Replacement or refund for products not performing as stated on the datasheet
- Valid for 12 months from date of delivery
- Response to your inquiry within 24 hours
  
- We provide support in Chinese, English, French, German, Japanese and Spanish
- Extensive multi-media technical resources to help you
- We investigate all quality concerns to ensure our products perform to the highest standards

If the product does not perform as described on this datasheet, we will offer a refund or replacement. For full details of the Abpromise, please visit <https://www.abcam.com/abpromise> or contact our technical team.

## **Terms and conditions**

---

- Guarantee only valid for products bought direct from Abcam or one of our authorized distributors