


Product datasheet

Anti-OLFM4 antibody ab65443

[1 Abreviews](#) [1 Image](#)

Overview

Product name	Anti-OLFM4 antibody
Description	Rabbit polyclonal to OLFM4
Host species	Rabbit
Tested applications	Suitable for: WB
Species reactivity	Reacts with: Human Predicted to work with: Rat, Horse, Guinea pig, Cow 
Immunogen	A region within a synthetic peptide: AFMVCGLYA TRTMNTRTEE IFYYDTNTG KEGKLDVMH KMQEKVQSIN, corresponding to C terminal amino acids 433-482 of Human OLFM4 Run BLAST with ExPASy Run BLAST with NCBI
Positive control	Jurkat cell lysate.

Properties

Form	Liquid
Storage instructions	Shipped at 4°C. Upon delivery aliquot and store at -20°C. Avoid freeze / thaw cycles.
Storage buffer	Preservative: 0.09% Sodium azide Constituents: 2% Sucrose, PBS
Purity	Protein A purified
Clonality	Polyclonal
Isotype	IgG

Applications

Our [Abpromise guarantee](#) covers the use of **ab65443** in the following tested applications.

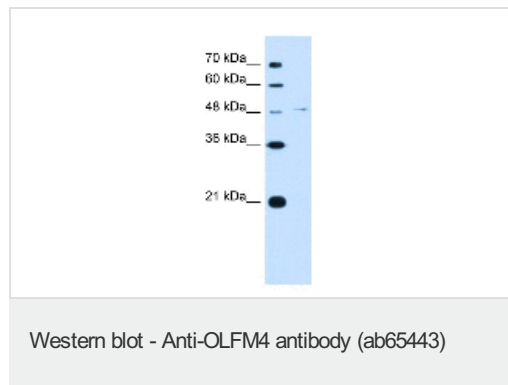
The application notes include recommended starting dilutions; optimal dilutions/concentrations should be determined by the end user.

Application	Abreviews	Notes
WB		Use a concentration of 5 µg/ml. Detects a band of approximately 50 kDa (predicted molecular weight: 57 kDa). Good results were obtained when blocked with 5% non-fat dry milk in 0.05% PBS-T.

Target

Function	An antiapoptotic factor that promotes tumor growth. Promotes proliferation of pancreatic cancer cells by favoring the transition from the S to G2/M phase. Facilitates cell adhesion.
Tissue specificity	Expressed during myeloid lineage development. Strongly expressed in the prostate, small intestine and colon and moderately expressed in the bone marrow and stomach. Highly expressed in pancreatic cancer tissues and shows an elevated expression level during the early S phase of the cell cycle. Also expressed at high levels in stomach cancer and colon cancer tissues.
Sequence similarities	Contains 1 olfactomedin-like domain.
Domain	The olfactomedin-like domain is involved in the interaction with cadherin.
Post-translational modifications	N-glycosylated.
Cellular localization	Secreted > extracellular space. According to PubMed:15059901, found in mitochondrion and nucleus.

Images



Anti-OLFM4 antibody (ab65443) at 5 µg/ml + Jurkat cell lysate at 10 µg

Secondary

HRP conjugated anti-Rabbit IgG at 1/50000 dilution

Predicted band size: 57 kDa

Observed band size: 50 kDa

[why is the actual band size different from the predicted?](#)

Please note: All products are "FOR RESEARCH USE ONLY AND ARE NOT INTENDED FOR DIAGNOSTIC OR THERAPEUTIC USE"

Our Abpromise to you: Quality guaranteed and expert technical support

- Replacement or refund for products not performing as stated on the datasheet
- Valid for 12 months from date of delivery
- Response to your inquiry within 24 hours
- We provide support in Chinese, English, French, German, Japanese and Spanish
- Extensive multi-media technical resources to help you
- We investigate all quality concerns to ensure our products perform to the highest standards

If the product does not perform as described on this datasheet, we will offer a refund or replacement. For full details of the Abpromise, please visit <https://www.abcam.com/abpromise> or contact our technical team.

Terms and conditions

- Guarantee only valid for products bought direct from Abcam or one of our authorized distributors