

## Product datasheet

# Anti-ASCC2 antibody ab66147

1 Image

### Overview

<b>Product name</b>	Anti-ASCC2 antibody
<b>Description</b>	Mouse polyclonal to ASCC2
<b>Host species</b>	Mouse
<b>Tested applications</b>	<b>Suitable for:</b> WB, ELISA
<b>Species reactivity</b>	<b>Reacts with:</b> Human <b>Predicted to work with:</b> Mouse, Rat, Horse, Cow, Dog, Rhesus monkey
<b>Immunogen</b>	Recombinant fragment with tag: APKPDHFVQD PAVLREKAEA RRMAFLAKKG YRHDSSTAVA GSPRGHGQSR ETTQERRKKE ANKATRANH N RRTMADRKRS KGMIPS, corresponding to amino acids 672-758 of Human ASCC2 <a href="#">Run BLAST with ExPASy</a> <a href="#">Run BLAST with NCBI</a>
<b>Positive control</b>	Partial recombinant tagged ASCC2.

### Properties

<b>Form</b>	Liquid
<b>Storage instructions</b>	Shipped at 4°C. Upon delivery aliquot and store at -20°C. Avoid freeze / thaw cycles.
<b>Storage buffer</b>	Preservative: None Constituents: 50% Glycerol, Whole serum
<b>Purity</b>	Whole antiserum
<b>Clonality</b>	Polyclonal
<b>Isotype</b>	IgG

### Applications

Our [Abpromise guarantee](#) covers the use of **ab66147** in the following tested applications.

The application notes include recommended starting dilutions; optimal dilutions/concentrations should be determined by the end user.

Application	Abreviews	Notes
WB		

Application	Abreviews	Notes
-------------	-----------	-------

ELISA

### Application notes

ELISA: Use at an assay dependent dilution.  
 WB: 1/1000 - 1/2500. Predicted molecular weight: 86 kDa.

This antibody has only been tested in WB against the recombinant fragment used as immunogen. We have no data on the detection of endogenous protein.

Not yet tested in other applications.  
 Optimal dilutions/concentrations should be determined by the end user.

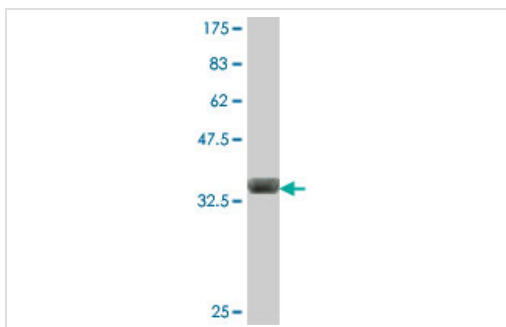
### Target

**Function** Enhances NF-kappa-B, SRF and AP1 transactivation.

**Tissue specificity** Ubiquitous.

**Sequence similarities** Belongs to the ASCC2 family.  
 Contains 1 CUE domain.

### Images



Western blot against tagged recombinant protein immunogen using ab66147 ASCC2 antibody at 1/1000 dilution. Predicted band size of immunogen is 35 kDa.

Western blot - Anti-ASCC2 antibody (ab66147)

**Please note:** All products are "FOR RESEARCH USE ONLY AND ARE NOT INTENDED FOR DIAGNOSTIC OR THERAPEUTIC USE"

### Our Abpromise to you: Quality guaranteed and expert technical support

- Replacement or refund for products not performing as stated on the datasheet
- Valid for 12 months from date of delivery
- Response to your inquiry within 24 hours
- We provide support in Chinese, English, French, German, Japanese and Spanish
- Extensive multi-media technical resources to help you
- We investigate all quality concerns to ensure our products perform to the highest standards

If the product does not perform as described on this datasheet, we will offer a refund or replacement. For full details of the Abpromise,

please visit <https://www.abcam.com/abpromise> or contact our technical team.

## Terms and conditions

---

- Guarantee only valid for products bought direct from Abcam or one of our authorized distributors