

Product datasheet

Anti-NFS1 antibody ab66272

1 Image

Overview

Product name	Anti-NFS1 antibody
Description	Rabbit polyclonal to NFS1
Host species	Rabbit
Tested applications	Suitable for: WB, ELISA
Species reactivity	Reacts with: Human Predicted to work with: Mouse, Rat, Rabbit, Horse, Chicken, Guinea pig, Cow, Cat, Dog, Pig, Saccharomyces cerevisiae
Immunogen	Synthetic peptide: GIIDLKELEA AIQPDTSLSV VMTVNNEIGV KQPIAEIGRI CSSRKVYFHT, corresponding to internal sequence amino acids 182-231 of Human NFS1 Run BLAST with ExPASy Run BLAST with NCBI
Positive control	HepG2 cell lysate

Properties

Form	Liquid
Storage instructions	Shipped at 4°C. Upon delivery aliquot and store at -20°C or -80°C. Avoid repeated freeze / thaw cycles.
Storage buffer	Preservative: None Constituents: 2% Sucrose, PBS
Purity	Protein A purified
Clonality	Polyclonal
Isotype	IgG

Applications

Our [Abpromise guarantee](#) covers the use of **ab66272** in the following tested applications.

The application notes include recommended starting dilutions; optimal dilutions/concentrations should be determined by the end user.

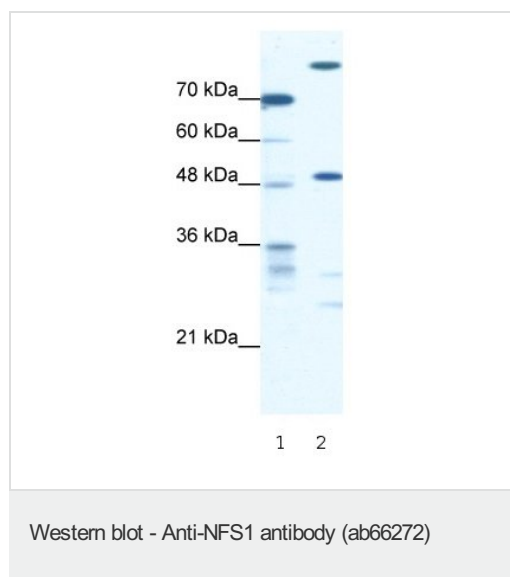
Application	Abreviews	Notes
-------------	-----------	-------

Application	Abreviews	Notes
WB		Use a concentration of 0.3125 µg/ml. Detects a band of approximately 50 kDa (predicted molecular weight: 50 kDa). Good results were obtained when blocked with 5% non-fat dry milk in 0.05% PBS-T.
ELISA		Use at an assay dependent concentration. Titre using peptide based assay: 1:312500.

Target

Function	Catalyzes the removal of elemental sulfur from cysteine to produce alanine. It supplies the inorganic sulfur for iron-sulfur (Fe-S) clusters. May be involved in the biosynthesis of molybdenum cofactor.
Tissue specificity	Predominantly expressed in heart and skeletal muscle. Also found in brain, liver and pancreas.
Sequence similarities	Belongs to the class-V pyridoxal-phosphate-dependent aminotransferase family. NifS/IscS subfamily.
Cellular localization	Cytoplasm. Nucleus and Mitochondrion.

Images



All lanes : Anti-NFS1 antibody (ab66272) at 0.31 µg/ml (in 5% skim milk / PBS buffer)

Lane 1 : markers

Lane 2 : HepG2 cell lysate at 10 µg

Secondary

All lanes : HRP conjugated anti-Rabbit IgG at 1/50000 dilution

Predicted band size: 50 kDa

Observed band size: 50 kDa

Additional bands at: >70 kDa, 25 kDa, 30 kDa. We are unsure as to the identity of these extra bands.

Gel concentration: 12%

Please note: All products are "FOR RESEARCH USE ONLY AND ARE NOT INTENDED FOR DIAGNOSTIC OR THERAPEUTIC USE"

Our Abpromise to you: Quality guaranteed and expert technical support

- Replacement or refund for products not performing as stated on the datasheet
- Valid for 12 months from date of delivery
- Response to your inquiry within 24 hours

- We provide support in Chinese, English, French, German, Japanese and Spanish
- Extensive multi-media technical resources to help you
- We investigate all quality concerns to ensure our products perform to the highest standards

If the product does not perform as described on this datasheet, we will offer a refund or replacement. For full details of the Abpromise, please visit <https://www.abcam.com/abpromise> or contact our technical team.

Terms and conditions

- Guarantee only valid for products bought direct from Abcam or one of our authorized distributors