

Product datasheet

Anti-PPP2R4 antibody ab67066

[2 Images](#)

Overview

Product name	Anti-PPP2R4 antibody
Description	Mouse polyclonal to PPP2R4
Host species	Mouse
Tested applications	Suitable for: WB, ICC/IF
Species reactivity	Reacts with: Human
Immunogen	Full length PPP2R4 protein (Human)
Positive control	WB: Transfected 293T cell lysate ICC/IF: HeLa cells

Properties

Form	Liquid
Storage instructions	Shipped at 4°C. Upon delivery aliquot and store at -20°C or -80°C. Avoid repeated freeze / thaw cycles.
Storage buffer	Preservative: None Constituents: PBS, pH 7.2
Purity	Protein A purified
Clonality	Polyclonal
Isotype	IgG

Applications

Our [Abpromise guarantee](#) covers the use of **ab67066** in the following tested applications.

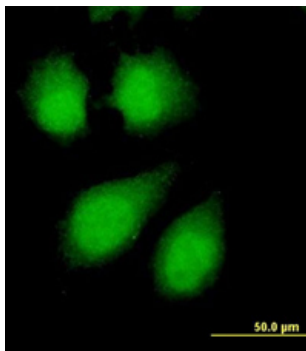
The application notes include recommended starting dilutions; optimal dilutions/concentrations should be determined by the end user.

Application	Abreviews	Notes
WB		1/500 - 1/1000. Detects a band of approximately 35 kDa (predicted molecular weight: 41 kDa).
ICC/IF		Use a concentration of 10 µg/ml.

Target

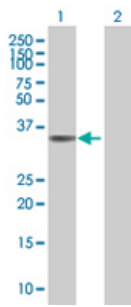
Function	PPlases accelerate the folding of proteins. It catalyzes the cis-trans isomerization of proline imidic peptide bonds in oligopeptides. Acts as a regulatory subunit for serine/threonine-protein phosphatase 2A (PP2A) modulating its activity or substrate specificity, probably by inducing a conformational change in the catalytic subunit, a proposed direct target of the PPlase. Can reactivate inactive phosphatase PP2A-phosphatase methylesterase complexes (PP2A(i)) in presence of ATP and Mg(2+) (By similarity). Reversibly stimulates the variable phosphotyrosyl phosphatase activity of PP2A core heterodimer PP2A(D) in presence of ATP and Mg(2+) (in vitro). The phosphotyrosyl phosphatase activity is dependent of an ATPase activity of the PP2A(D):PPP2R4 complex. Is involved in apoptosis; the function appears to be independent from PP2A.
Tissue specificity	Widely expressed.
Sequence similarities	Belongs to the PTPA-type PPlase family.
Cellular localization	Cytoplasm. Nucleus.

Images



Immunofluorescence analysis of PPP2R4 in HeLa cell using ab67066 at a concentration of 10μg/ml.

Immunocytochemistry/ Immunofluorescence - Anti-PPP2R4 antibody (ab67066)



Western blot - Anti-PPP2R4 antibody (ab67066)

All lanes : Anti-PPP2R4 antibody (ab67066)
at 1/500 dilution

Lane 1 : PPP2R4 transfected 293T cell lysate

Lane 2 : Non-transfected 293T cell lysate

Lysates/proteins at 25 µg/ml per lane.

Secondary

All lanes : Goat Anti-Mouse IgG (H&L)-HRP
Conjugate at 1/2500 dilution

Predicted band size: 41 kDa

Observed band size: 35 kDa

Please note: All products are "FOR RESEARCH USE ONLY AND ARE NOT INTENDED FOR DIAGNOSTIC OR THERAPEUTIC USE"

Our Abpromise to you: Quality guaranteed and expert technical support

- Replacement or refund for products not performing as stated on the datasheet
- Valid for 12 months from date of delivery
- Response to your inquiry within 24 hours
- We provide support in Chinese, English, French, German, Japanese and Spanish
- Extensive multi-media technical resources to help you
- We investigate all quality concerns to ensure our products perform to the highest standards

If the product does not perform as described on this datasheet, we will offer a refund or replacement. For full details of the Abpromise, please visit <https://www.abcam.com/abpromise> or contact our technical team.

Terms and conditions

- Guarantee only valid for products bought direct from Abcam or one of our authorized distributors