

Product datasheet

Anti-PEF1 antibody ab67230

2 Images

Overview

<b>Product name</b>	Anti-PEF1 antibody
<b>Description</b>	Mouse polyclonal to PEF1
<b>Host species</b>	Mouse
<b>Tested applications</b>	<b>Suitable for:</b> WB
<b>Species reactivity</b>	<b>Reacts with:</b> Human
<b>Immunogen</b>	PEF1 (AAH02773, 1 a.a. ~ 285 a.a) full-length human protein.
<b>Positive control</b>	Human thyroid (diffuse hyperplasia) lysate. PEF1 transfected 293T cell lysate.

Properties

<b>Form</b>	Liquid
<b>Storage instructions</b>	Shipped at 4°C. Upon delivery aliquot and store at -20°C or -80°C. Avoid repeated freeze / thaw cycles.
<b>Storage buffer</b>	Preservative: None Constituents: 1x PBS, pH 7.2
<b>Purity</b>	Protein A purified
<b>Clonality</b>	Polyclonal
<b>Isotype</b>	IgG

Applications

Our [Abpromise guarantee](#) covers the use of **ab67230** in the following tested applications.

The application notes include recommended starting dilutions; optimal dilutions/concentrations should be determined by the end user.

Application	Abreviews	Notes
WB		Use a concentration of 1 - 5 µg/ml. Detects a band of approximately 30 kDa (predicted molecular weight: 30 kDa).

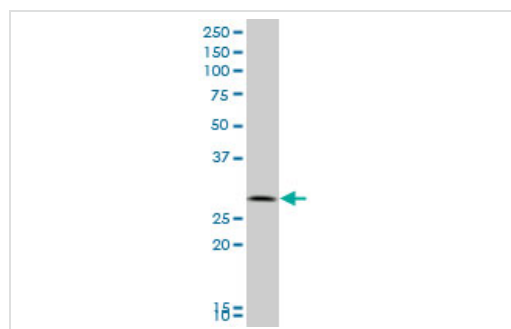
Target

**Sequence similarities**

Contains 5 EF-hand domains.

**Cellular localization**

Cytoplasm. Membrane. Membrane-associated in the presence of C.

**Images**

Western blot - Anti-PEF1 antibody (ab67230)

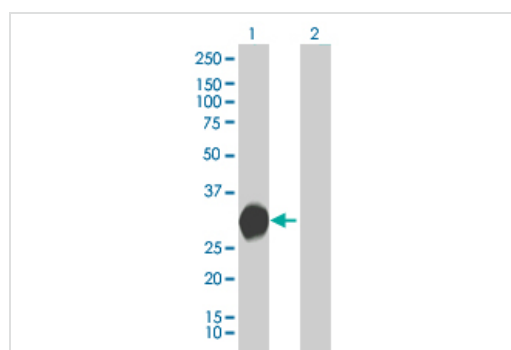
Anti-PEF1 antibody (ab67230) at 1 µg/ml +  
human thyroid (diffuse hyperplasia) lysate at  
25 µg

**Secondary**

Goat Anti-Mouse IgG (H&L)-HRP Conjugate at  
1/2500 dilution

**Predicted band size:** 30 kDa

**Observed band size:** 30 kDa



Western blot - Anti-PEF1 antibody (ab67230)

**All lanes :** Anti-PEF1 antibody (ab67230) at  
1 µg/ml

**Lane 1 :** PEF1 transfected 293T cell lysate

**Lane 2 :** Non-transfected 293T cell lysate

Lysates/proteins at 25 µg per lane.

**Secondary**

**All lanes :** Goat Anti-Mouse IgG (H&L)-HRP  
Conjugate at 1/2500 dilution

**Predicted band size:** 30 kDa

**Observed band size:** 30 kDa

**Please note:** All products are "FOR RESEARCH USE ONLY AND ARE NOT INTENDED FOR DIAGNOSTIC OR THERAPEUTIC USE"

**Our Abpromise to you: Quality guaranteed and expert technical support**

- Replacement or refund for products not performing as stated on the datasheet
- Valid for 12 months from date of delivery
- Response to your inquiry within 24 hours
- We provide support in Chinese, English, French, German, Japanese and Spanish
- Extensive multi-media technical resources to help you

- We investigate all quality concerns to ensure our products perform to the highest standards

If the product does not perform as described on this datasheet, we will offer a refund or replacement. For full details of the Abpromise, please visit <https://www.abcam.com/abpromise> or contact our technical team.

### **Terms and conditions**

---

- Guarantee only valid for products bought direct from Abcam or one of our authorized distributors