

Product datasheet

Anti-ACP6 antibody ab68303

1 Image

Overview

Product name	Anti-ACP6 antibody
Description	Mouse polyclonal to ACP6
Host species	Mouse
Specificity	This antibody is reactive against mammalian transfected lysate.
Tested applications	Suitable for: WB
Species reactivity	Reacts with: Human
Immunogen	ACP6 (NP_057445.2, 1 a.a. ~ 428 a.a) full-length human protein.
Positive control	ACP6 transfected 293T cell lysate

Properties

Form	Liquid
Storage instructions	Shipped at 4°C. Upon delivery aliquot and store at -20°C or -80°C. Avoid repeated freeze / thaw cycles.
Storage buffer	Preservative: None Constituents: PBS, pH 7.2
Purity	Protein A purified
Clonality	Polyclonal
Isotype	IgG

Applications

Our [Abpromise guarantee](#) covers the use of **ab68303** in the following tested applications.

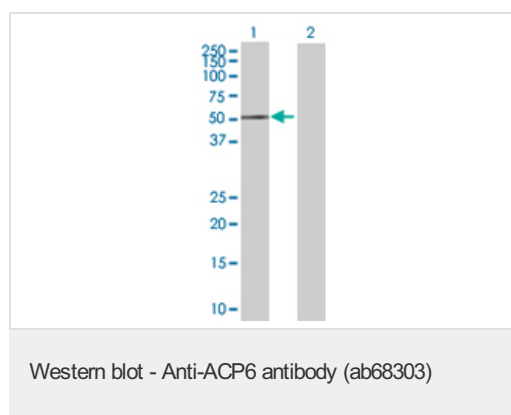
The application notes include recommended starting dilutions; optimal dilutions/concentrations should be determined by the end user.

Application	Abreviews	Notes
WB		1/500 - 1/1000. Detects a band of approximately 50 kDa (predicted molecular weight: 49 kDa).

Target

Function	Hydrolyzes lysophosphatidic acid to monoacylglycerol.
Tissue specificity	Highly expressed in kidney, heart, small intestine, muscle, liver, prostate, testis, ovary and weakly expressed in thymus and colon.
Sequence similarities	Belongs to the histidine acid phosphatase family.
Cellular localization	Secreted.

Images



All lanes : Anti-ACP6 antibody (ab68303) at 1/500 dilution

Lane 1 : ACP6 transfected 293T cell lysate

Lane 2 : Non-transfected 293T cell lysate

Lysates/proteins at 25 µg per lane.

Secondary

All lanes : Goat Anti-Mouse IgG (H&L)-HRP Conjugate at 1/2500 dilution

Predicted band size: 49 kDa

Observed band size: 50 kDa

Please note: All products are "FOR RESEARCH USE ONLY AND ARE NOT INTENDED FOR DIAGNOSTIC OR THERAPEUTIC USE"

Our Abpromise to you: Quality guaranteed and expert technical support

- Replacement or refund for products not performing as stated on the datasheet
- Valid for 12 months from date of delivery
- Response to your inquiry within 24 hours
- We provide support in Chinese, English, French, German, Japanese and Spanish
- Extensive multi-media technical resources to help you
- We investigate all quality concerns to ensure our products perform to the highest standards

If the product does not perform as described on this datasheet, we will offer a refund or replacement. For full details of the Abpromise, please visit <https://www.abcam.com/abpromise> or contact our technical team.

Terms and conditions

- Guarantee only valid for products bought direct from Abcam or one of our authorized distributors