

Product datasheet

Anti-BAFF antibody ab68345

2 Images

Overview

Product name	Anti-BAFF antibody
Description	Mouse monoclonal to BAFF
Host species	Mouse
Tested applications	Suitable for: WB, ELISA
Species reactivity	Reacts with: Human
Immunogen	TNFSF13B (AAH20674, 1 a.a. ~ 286 a.a) full length recombinant protein with tag. MW of the tag is 26kDa.
Positive control	<div style="border: 1px solid #ccc; padding: 5px; display: inline-block;"> Purchase matching WB positive control: Recombinant Human BAFF protein > </div> BAFF transfected 293T cell lysate

Properties

Form	Liquid
Storage instructions	Shipped at 4°C. Upon delivery aliquot and store at -20°C or -80°C. Avoid repeated freeze / thaw cycles.
Storage buffer	Preservative: None Constituents: PBS, pH 7.2
Purity	Protein A purified
Clonality	Monoclonal
Isotype	IgG1
Light chain type	kappa

Applications

Our [Abpromise guarantee](#) covers the use of **ab68345** in the following tested applications.

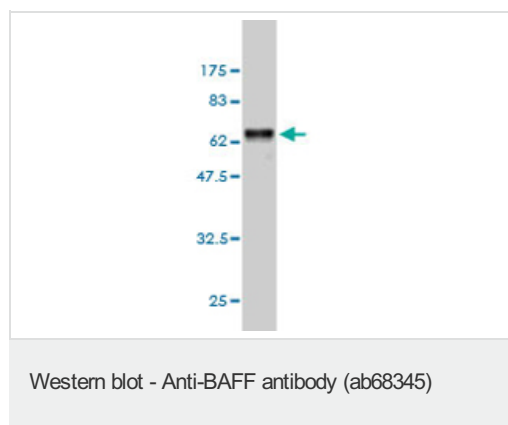
The application notes include recommended starting dilutions; optimal dilutions/concentrations should be determined by the end user.

Application	Abreviews	Notes
WB		1/500 - 1/1000. Detects a band of approximately 35 kDa (predicted molecular weight: 31 kDa).
ELISA		Use at an assay dependent dilution.

Target

Function	Cytokine that binds to TNFRSF13B/TACI and TNFRSF17/BCMA. TNFSF13/APRIL binds to the same 2 receptors. Together, they form a 2 ligands -2 receptors pathway involved in the stimulation of B-and T-cell function and the regulation of humoral immunity. A third B-cell specific BAFF-receptor (BAFFR/BR3) promotes the survival of mature B-cells and the B-cell response.
Tissue specificity	Abundantly expressed in peripheral blood Leukocytes and is specifically expressed in monocytes and macrophages. Also found in the spleen, lymph node, bone marrow, T-cells and dendritic cells. A lower expression seen in placenta, heart, lung, fetal liver, thymus, and pancreas.
Sequence similarities	Belongs to the tumor necrosis factor family.
Post-translational modifications	The soluble form derives from the membrane form by proteolytic processing. N-glycosylated.
Cellular localization	Secreted and Cell membrane.

Images



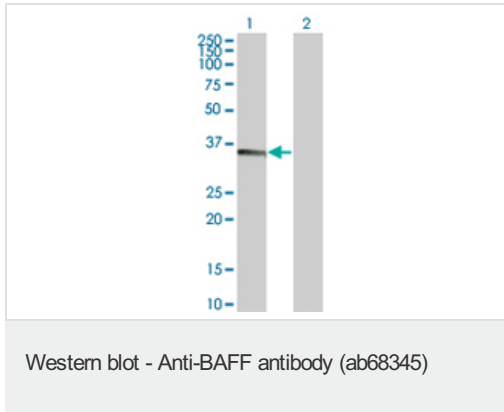
Anti-BAFF antibody (ab68345) at 1/500 dilution + immunogen of 57kDa at 25 µg

Secondary

Goat Anti-Mouse IgG (H&L)-HRP Conjugate at 1/2500 dilution

Predicted band size: 31 kDa

Observed band size: 70 kDa



All lanes : Anti-BAFF antibody (ab68345) at 1/500 dilution

Lane 1 : BAFF transfected 293T cell lysate

Lane 2 : Non-transfected 293T cell lysate

Lysates/proteins at 25 µg per lane.

Secondary

All lanes : Goat Anti-Mouse IgG (H&L)-HRP

Conjugate at 1/2500 dilution

Predicted band size: 31 kDa

Observed band size: 35 kDa

Please note: All products are "FOR RESEARCH USE ONLY AND ARE NOT INTENDED FOR DIAGNOSTIC OR THERAPEUTIC USE"

Our Abpromise to you: Quality guaranteed and expert technical support

- Replacement or refund for products not performing as stated on the datasheet
- Valid for 12 months from date of delivery
- Response to your inquiry within 24 hours
- We provide support in Chinese, English, French, German, Japanese and Spanish
- Extensive multi-media technical resources to help you
- We investigate all quality concerns to ensure our products perform to the highest standards

If the product does not perform as described on this datasheet, we will offer a refund or replacement. For full details of the Abpromise, please visit <https://www.abcam.com/abpromise> or contact our technical team.

Terms and conditions

- Guarantee only valid for products bought direct from Abcam or one of our authorized distributors