

Product datasheet

Anti-Recoverin antibody ab68420

[3 Images](#)

Overview

Product name	Anti-Recoverin antibody
Description	Mouse monoclonal to Recoverin
Host species	Mouse
Tested applications	Suitable for: WB, ELISA
Species reactivity	Reacts with: Recombinant fragment Predicted to work with: Human, Chimpanzee, Rhesus monkey
Immunogen	Recombinant tagged fragment: KLEWAFSLYD VDGNGTISKV EVLEIVMAIF KMITPEDVKL LPDDENTPEK RAEKIWKYFG KNDDDKLTEK EFIEGTLANK EILRLIQFEP QKVKEKMKV, corresponding to amino acids 101-200 of Human Recoverin Run BLAST with ExPASy Run BLAST with NCBI
Positive control	Recoverin transfected 293T cell lysate.

Properties

Form	Liquid
Storage instructions	Shipped at 4°C. Upon delivery aliquot. Store at -20°C or -80°C. Avoid freeze / thaw cycle.
Storage buffer	Preservative: None Constituents: 1X PBS pH 7.2
Purity	Protein A purified
Clonality	Monoclonal
Isotype	IgG2a
Light chain type	kappa

Applications

Our [Abpromise guarantee](#) covers the use of **ab68420** in the following tested applications.

The application notes include recommended starting dilutions; optimal dilutions/concentrations should be determined by the end user.

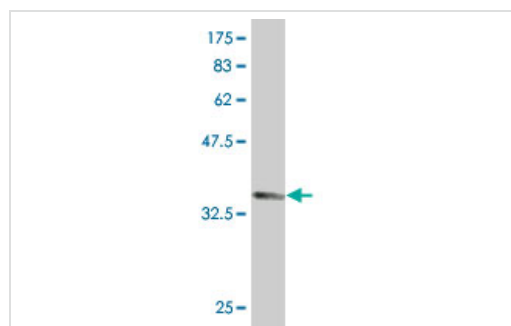
Application	Abreviews	Notes

Application	Abreviews	Notes
WB		Use a concentration of 1 - 5 µg/ml. Predicted molecular weight: 23 kDa. This antibody has only been tested in WB against the recombinant fragment used as immunogen. We have no data on the detection of endogenous protein.
ELISA		Use at an assay dependent dilution.

Target

Function	Seems to be implicated in the pathway from retinal rod guanylate cyclase to rhodopsin. May be involved in the inhibition of the phosphorylation of rhodopsin in a calcium-dependent manner. The calcium-bound recoverin prolongs the photoresponse.
Tissue specificity	Retina and pineal gland.
Sequence similarities	Belongs to the recoverin family. Contains 4 EF-hand domains.

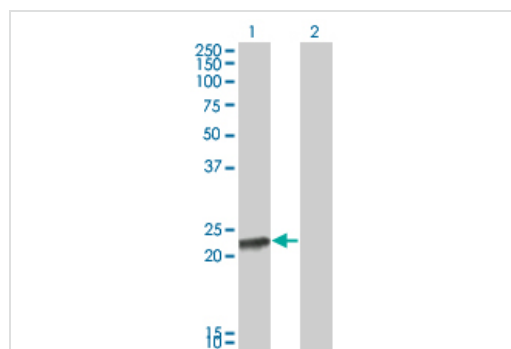
Images



Western blot - Anti-Recoverin antibody (ab68420)

Western blot against tagged recombinant protein immunogen using ab68420 Recoverin antibody at 1µg/ml. Predicted band size of immunogen is 37 kDa.

This antibody has only been tested in WB against the recombinant fragment used as immunogen. We have no data on the detection of endogenous protein.



Western blot - Anti-Recoverin antibody (ab68420)

All lanes : Anti-Recoverin antibody (ab68420) at 1 µg/ml

Lane 1 : Recoverin transfected 293T cell lysate

Lane 2 : Non-transfected 293T cell lysate.

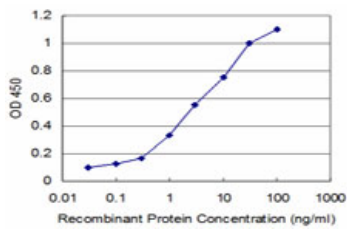
Lysates/proteins at 25 µg per lane.

Secondary

All lanes : Goat Anti-Mouse IgG (H&L)-HRP Conjugate secondary antibody at 1/2500 dilution

Predicted band size: 23 kDa

Observed band size: 23 kDa



Sandwich ELISA: Detection limit for recombinant tagged Recoverin is approximately 0.1ng/ml as a capture antibody.

ELISA - Anti-Recoverin antibody (ab68420)

Please note: All products are "FOR RESEARCH USE ONLY AND ARE NOT INTENDED FOR DIAGNOSTIC OR THERAPEUTIC USE"

Our Abpromise to you: Quality guaranteed and expert technical support

- Replacement or refund for products not performing as stated on the datasheet
- Valid for 12 months from date of delivery
- Response to your inquiry within 24 hours
- We provide support in Chinese, English, French, German, Japanese and Spanish
- Extensive multi-media technical resources to help you
- We investigate all quality concerns to ensure our products perform to the highest standards

If the product does not perform as described on this datasheet, we will offer a refund or replacement. For full details of the Abpromise, please visit <https://www.abcam.com/abpromise> or contact our technical team.

Terms and conditions

- Guarantee only valid for products bought direct from Abcam or one of our authorized distributors