

Product datasheet

Anti-SCLY antibody ab69343

2 Images

Overview

<b>Product name</b>	Anti-SCLY antibody
<b>Description</b>	Mouse polyclonal to SCLY
<b>Host species</b>	Mouse
<b>Tested applications</b>	<b>Suitable for:</b> WB
<b>Species reactivity</b>	<b>Reacts with:</b> Human
<b>Immunogen</b>	Full length human protein (NP_057594.2, aa 1 - 445)
<b>Positive control</b>	Transfected 293T cell lysate or liver tissue lysate.

Properties

<b>Form</b>	Liquid
<b>Storage instructions</b>	Shipped at 4°C. Upon delivery aliquot and store at -20°C or -80°C. Avoid repeated freeze / thaw cycles.
<b>Storage buffer</b>	Preservative: None Constituents: 1X PBS, pH 7.2
<b>Purity</b>	Protein G purified
<b>Clonality</b>	Polyclonal
<b>Isotype</b>	IgG

Applications

Our [Abpromise guarantee](#) covers the use of **ab69343** in the following tested applications.

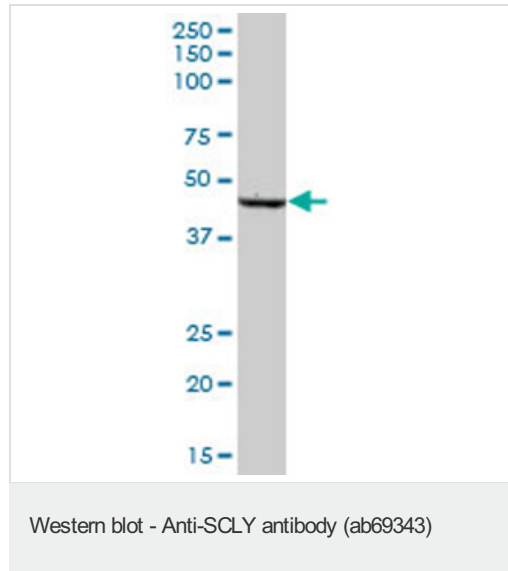
The application notes include recommended starting dilutions; optimal dilutions/concentrations should be determined by the end user.

Application	Abreviews	Notes
WB		1/500 - 1/1000. Detects a band of approximately 48 kDa (predicted molecular weight: 48 kDa).

Target

<b>Function</b>	Catalyzes the decomposition of L-selenocysteine to L-alanine and elemental selenium.
<b>Sequence similarities</b>	Belongs to the class-V pyridoxal-phosphate-dependent aminotransferase family.
<b>Cellular localization</b>	Cytoplasm > cytosol.

## Images



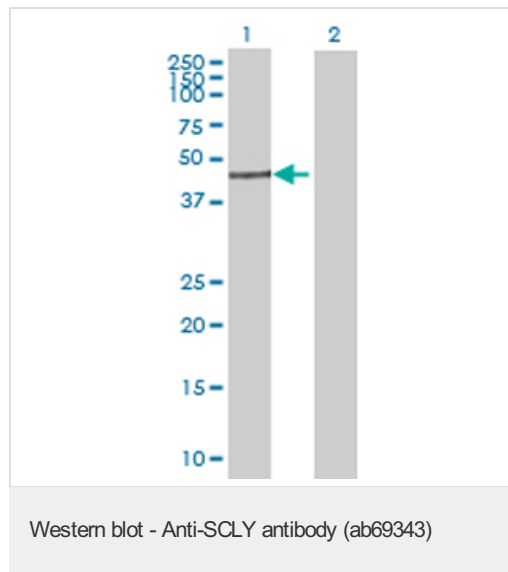
Anti-SCLY antibody (ab69343) at 1/500 dilution + human liver tissue lysate at 25 µg

### Secondary

Goat Anti-Mouse IgG (H&L)-HRP conjugated at 1/2500 dilution

**Predicted band size:** 48 kDa

**Observed band size:** 48 kDa



**All lanes :** Anti-SCLY antibody (ab69343) at 1/500 dilution

**Lane 1 :** SCLY transfected 293T cell lysate

**Lane 2 :** Non transfected 293T cell lysate

Lysates/proteins at 25 µg per lane.

### Secondary

**All lanes :** Goat Anti-Mouse IgG (H&L)-HRP conjugated at 1/2500 dilution

**Predicted band size:** 48 kDa

**Observed band size:** 48 kDa

**Please note:** All products are "FOR RESEARCH USE ONLY AND ARE NOT INTENDED FOR DIAGNOSTIC OR THERAPEUTIC USE"

## Our Abpromise to you: Quality guaranteed and expert technical support

- Replacement or refund for products not performing as stated on the datasheet
- Valid for 12 months from date of delivery
- Response to your inquiry within 24 hours

- We provide support in Chinese, English, French, German, Japanese and Spanish
- Extensive multi-media technical resources to help you
- We investigate all quality concerns to ensure our products perform to the highest standards

If the product does not perform as described on this datasheet, we will offer a refund or replacement. For full details of the Abpromise, please visit <https://www.abcam.com/abpromise> or contact our technical team.

### **Terms and conditions**

---

- Guarantee only valid for products bought direct from Abcam or one of our authorized distributors