


Product datasheet

Anti-COL20A1 antibody ab69612

3 Images

Overview

<b>Product name</b>	Anti-COL20A1 antibody
<b>Description</b>	Rabbit polyclonal to COL20A1
<b>Host species</b>	Rabbit
<b>Tested applications</b>	<b>Suitable for:</b> ELISA, WB, IHC-P, ICC/IF
<b>Species reactivity</b>	<b>Reacts with:</b> Human <b>Predicted to work with:</b> Mouse 
<b>Immunogen</b>	Synthetic peptide derived from the C-terminus of human COL20A1.
<b>Positive control</b>	Human skeletal muscle tissue. Extracts from HUVEC cells. NIH/3T3 cells.

Properties

<b>Form</b>	Liquid
<b>Storage instructions</b>	Shipped at 4°C. Upon delivery aliquot and store at -20°C. Avoid freeze / thaw cycles.
<b>Storage buffer</b>	Preservative: 0.02% Sodium Azide Constituents: 50% Glycerol, PBS (without Mg <sup>2+</sup> and Ca <sup>2+</sup> ), 150mM Sodium chloride, pH 7.4
<b>Purity</b>	Immunogen affinity purified
<b>Clonality</b>	Polyclonal
<b>Isotype</b>	IgG

Applications

Our [Abpromise guarantee](#) covers the use of **ab69612** in the following tested applications.

The application notes include recommended starting dilutions; optimal dilutions/concentrations should be determined by the end user.

Application	Abreviews	Notes
ELISA		1/20000.
WB		1/500 - 1/1000. Detects a band of approximately 140 kDa (predicted molecular weight: 140 kDa).
IHC-P		1/50 - 1/100.

Application	Abreviews	Notes
-------------	-----------	-------

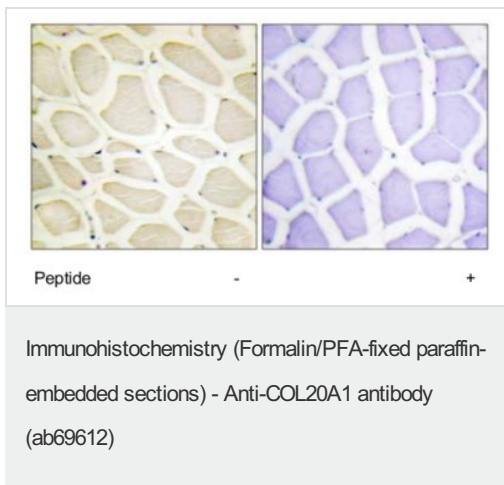
ICC/IF 1/500 - 1/1000.

## Target

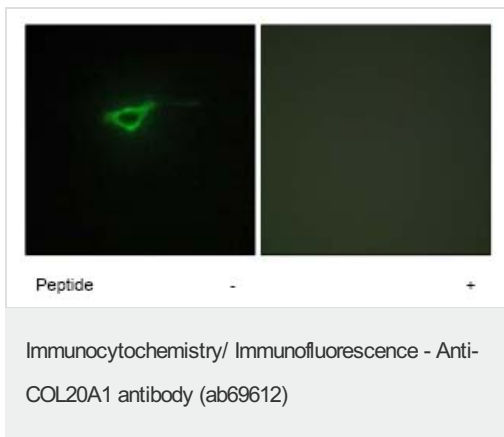
**Relevance** COL20A1 is a probable collagen protein.

**Cellular localization** Secreted, extracellular space.

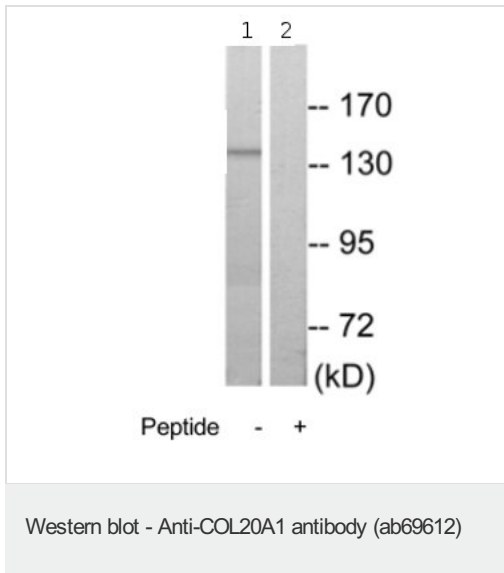
## Images



Immunohistochemistry analysis of paraffin-embedded human skeletal muscle tissue using ab69612 at 1/50 dilution, with and without the immunising peptide.



Immunofluorescence analysis of NIH/3T3 cells using ab69612 at 1/500 dilution, with and without the immunising peptide.



**All lanes :** Anti-COL20A1 antibody (ab69612) at 1/500 dilution

**Lane 1 :** Extracts from HUVEC cells

**Lane 2 :** Extracts from HUVEC cells with immunising peptide at 5 µg

Lysates/proteins at 5 µg per lane.

**Predicted band size:** 140 kDa

**Observed band size:** 140 kDa

**Please note:** All products are "FOR RESEARCH USE ONLY AND ARE NOT INTENDED FOR DIAGNOSTIC OR THERAPEUTIC USE"

### Our Abpromise to you: Quality guaranteed and expert technical support

- Replacement or refund for products not performing as stated on the datasheet
- Valid for 12 months from date of delivery
- Response to your inquiry within 24 hours
- We provide support in Chinese, English, French, German, Japanese and Spanish
- Extensive multi-media technical resources to help you
- We investigate all quality concerns to ensure our products perform to the highest standards

If the product does not perform as described on this datasheet, we will offer a refund or replacement. For full details of the Abpromise, please visit <https://www.abcam.com/abpromise> or contact our technical team.

### Terms and conditions

- Guarantee only valid for products bought direct from Abcam or one of our authorized distributors