

Product datasheet

Anti-GTF2A1 antibody ab69762

1 Image

Overview

Product name	Anti-GTF2A1 antibody
Description	Rabbit polyclonal to GTF2A1
Host species	Rabbit
Tested applications	Suitable for: WB, ELISA
Species reactivity	Reacts with: Mouse, Human Predicted to work with: Rat
Immunogen	Synthetic peptide (Human) derived from the C-terminus of GTF2A1.
Positive control	Extracts from RAW264.7 cells

Properties

Form	Liquid
Storage instructions	Shipped at 4°C. Upon delivery aliquot and store at -20°C. Avoid freeze / thaw cycles.
Storage buffer	Preservative: 0.02% Sodium Azide Constituents: 50% Glycerol, PBS (without Mg ²⁺ and Ca ²⁺), 150mM Sodium chloride, pH 7.4
Purity	Immunogen affinity purified
Clonality	Polyclonal
Isotype	IgG

Applications

Our [Abpromise guarantee](#) covers the use of **ab69762** in the following tested applications.

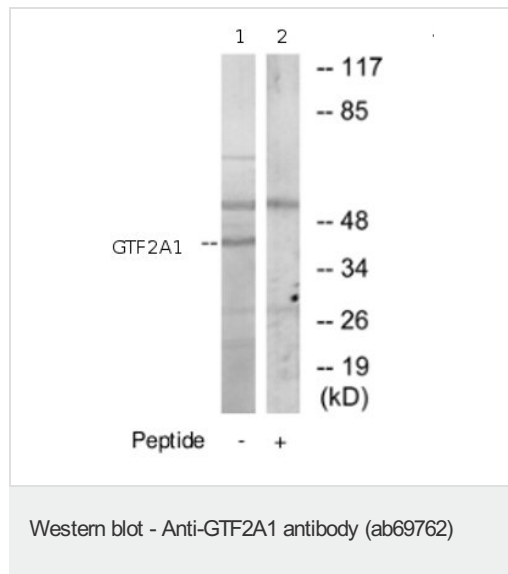
The application notes include recommended starting dilutions; optimal dilutions/concentrations should be determined by the end user.

Application	Abreviews	Notes
WB		1/500 - 1/1000. Detects a band of approximately 41 kDa (predicted molecular weight: 41 kDa).
ELISA		1/40000.

Target

Function	TFIIA is a component of the transcription machinery of RNA polymerase II and plays an important role in transcriptional activation. TFIIA in a complex with TBP mediates transcriptional activity.
Sequence similarities	Belongs to the TFIIA subunit 1 family.
Post-translational modifications	The alpha and beta subunits are postrationally produced from the precursor form by TASP1. The cleavage promotes proteasomal degradation.
Cellular localization	Nucleus.

Images



All lanes : Anti-GTF2A1 antibody (ab69762)
at 1/500 dilution

Lane 1 : extracts from RAW264.7 cells

Lane 2 : extracts from RAW264.7 cells with
immunizing peptide at 10 µg

Lysates/proteins at 15 µg per lane.

Predicted band size: 41 kDa

Observed band size: 41 kDa

Additional bands at: 55 kDa, 70 kDa. We
are unsure as to the identity of these extra
bands.

Please note: All products are "FOR RESEARCH USE ONLY AND ARE NOT INTENDED FOR DIAGNOSTIC OR THERAPEUTIC USE"

Our Abpromise to you: Quality guaranteed and expert technical support

- Replacement or refund for products not performing as stated on the datasheet
- Valid for 12 months from date of delivery
- Response to your inquiry within 24 hours
- We provide support in Chinese, English, French, German, Japanese and Spanish
- Extensive multi-media technical resources to help you
- We investigate all quality concerns to ensure our products perform to the highest standards

If the product does not perform as described on this datasheet, we will offer a refund or replacement. For full details of the Abpromise, please visit <https://www.abcam.com/abpromise> or contact our technical team.

Terms and conditions

- Guarantee only valid for products bought direct from Abcam or one of our authorized distributors