

Product datasheet

Anti-SLC22A23 antibody ab69853

1 Image

Overview

Product name	Anti-SLC22A23 antibody
Description	Rabbit polyclonal to SLC22A23
Host species	Rabbit
Tested applications	Suitable for: WB, ELISA
Species reactivity	Reacts with: Human Predicted to work with: Mouse, Rat, Rabbit, Horse, Guinea pig, Cow, Cat, Dog, Pig
Immunogen	A region within synthetic peptide: NLWKNIVLC VNSLTGYGIH HCFARSMMGH EVKVPLENF YADYYTTASI, corresponding to internal sequence amino acids 145-194 of Human SLC22A23 Run BLAST with ExPASy Run BLAST with NCBI
Positive control	Jurkat cell lysate.

Properties

Form	Liquid
Storage instructions	Shipped at 4°C. Upon delivery aliquot and store at -20°C. Avoid freeze / thaw cycles.
Storage buffer	Preservative: 0.09% Sodium azide Constituents: 2% Sucrose, PBS
Purity	Protein A purified
Clonality	Polyclonal
Isotype	IgG

Applications

Our [Abpromise guarantee](#) covers the use of **ab69853** in the following tested applications.

The application notes include recommended starting dilutions; optimal dilutions/concentrations should be determined by the end user.

Application	Abreviews	Notes
WB		Use a concentration of 1 µg/ml. Detects a band of approximately 45 kDa (predicted molecular weight: 74 kDa). Good results were obtained when blocked with 5% non-fat dry milk in 0.05% PBS-T.

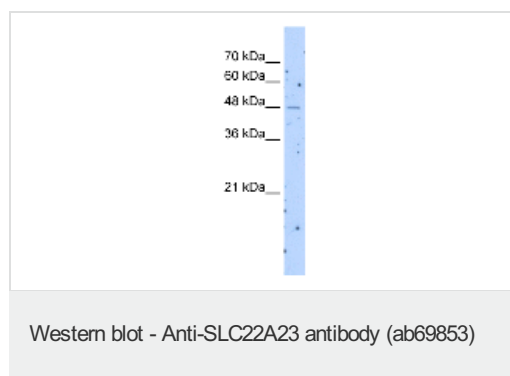
Application	Abreviews	Notes
ELISA		Use at an assay dependent concentration. ELISA titre using peptide based assay: 1/312500.

Target

Relevance SLC22A23 belongs to a large family of transmembrane proteins that function as uniporters, symporters, and antiporters to transport organic ions across cell membranes (Jacobsson et al., 2007 [PubMed 17714910]).[supplied by OMIM]

Cellular localization Membrane; Multipass membrane protein

Images



Anti-SLC22A23 antibody (ab69853) at 1 µg/ml + Jurkat cell lysate at 10 µg with 5% skim milk / PBS buffer

Secondary

anti-Rabbit IgG HRP at 1/50000 dilution

Predicted band size: 74 kDa

Observed band size: 45 kDa

[why is the actual band size different from the predicted?](#)

Molecular weight is different to predicted as protein is an isoform.

Please note: All products are "FOR RESEARCH USE ONLY AND ARE NOT INTENDED FOR DIAGNOSTIC OR THERAPEUTIC USE"

Our Abpromise to you: Quality guaranteed and expert technical support

- Replacement or refund for products not performing as stated on the datasheet
- Valid for 12 months from date of delivery
- Response to your inquiry within 24 hours
- We provide support in Chinese, English, French, German, Japanese and Spanish
- Extensive multi-media technical resources to help you
- We investigate all quality concerns to ensure our products perform to the highest standards

If the product does not perform as described on this datasheet, we will offer a refund or replacement. For full details of the Abpromise, please visit <https://www.abcam.com/abpromise> or contact our technical team.

Terms and conditions

- Guarantee only valid for products bought direct from Abcam or one of our authorized distributors