

Product datasheet

Anti-SmarcAL1 antibody ab69900

★ ★ ★ ★ ★ 2 Abreviews
 [1 References](#)
 [1 Image](#)

Overview

Product name	Anti-SmarcAL1 antibody
Description	Rabbit polyclonal to SmarcAL1
Host species	Rabbit
Tested applications	Suitable for: WB, ELISA
Species reactivity	Reacts with: Human Predicted to work with: Mouse, Rat, Rabbit, Horse, Guinea pig, Cow, Cat, Dog
Immunogen	A region within synthetic peptide: FDPGSASGTS GSSSQNMGDT LDESSLTASP QKKRRFEFFD NWDSFTSPL, corresponding to C terminal amino acids 906-954 of Human SmarcAL1 Run BLAST with ExPASy Run BLAST with NCBI
Positive control	721 B lymphoblast cell lysate.

Properties

Form	Liquid
Storage instructions	Shipped at 4°C. Upon delivery aliquot and store at -20°C. Avoid freeze / thaw cycles.
Storage buffer	Preservative: 0.09% Sodium azide Constituents: 2% Sucrose, PBS
Purity	Protein A purified
Clonality	Polyclonal
Isotype	IgG

Applications

Our [Abpromise guarantee](#) covers the use of **ab69900** in the following tested applications.

The application notes include recommended starting dilutions; optimal dilutions/concentrations should be determined by the end user.

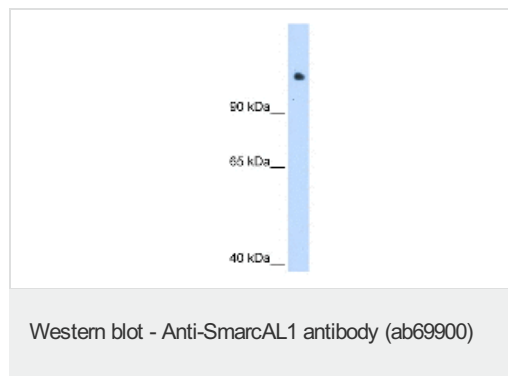
Application	Abreviews	Notes
WB	★ ★ ★ ★ ★	Use a concentration of 1.25 µg/ml. Detects a band of approximately 106 kDa (predicted molecular weight: 106 kDa). Good results were obtained when blocked with 5% non-fat dry milk in 0.05% PBS-T.

Application	Abreviews	Notes
ELISA		Use at an assay dependent concentration. ELISA titre using peptide based assay: 1/312500.

Target

Function	ATP-dependent annealing helicase that catalyzes the rewinding of the stably unwound DNA. Rewinds single-stranded DNA bubbles that are stably bound by replication protein A (RPA). Acts throughout the genome to reanneal stably unwound DNA, performing the opposite reaction of many enzymes, such as helicases and polymerases, that unwind DNA.
Tissue specificity	Ubiquitously expressed, with high levels in testis.
Involvement in disease	Defects in SMARCAL1 are a cause of Schimke immuno-osseous dysplasia (SIOD) [MIM:242900]. SIOD causes spondyloepiphyseal dysplasia, renal dysfunction and T-cell immunodeficiency. Approximately half of all patients also exhibit hyperthyroidism, while around half also exhibit episodal cerebral ischemia.
Sequence similarities	Belongs to the SNF2/RAD54 helicase family. SMARCAL1 subfamily. Contains 2 HARP domains. Contains 1 helicase ATP-binding domain. Contains 1 helicase C-terminal domain.
Cellular localization	Nucleus.

Images



Anti-SmarcAL1 antibody (ab69900) at 1.25 µg/ml + 721 B lymphoblast cell lysate at 10 µg

Secondary

anti-Rabbit IgG HRP at 1/50000 dilution

Predicted band size: 106 kDa

Observed band size: 106 kDa

Please note: All products are "FOR RESEARCH USE ONLY AND ARE NOT INTENDED FOR DIAGNOSTIC OR THERAPEUTIC USE"

Our Promise to you: Quality guaranteed and expert technical support

- Replacement or refund for products not performing as stated on the datasheet
- Valid for 12 months from date of delivery
- Response to your inquiry within 24 hours
- We provide support in Chinese, English, French, German, Japanese and Spanish
- Extensive multi-media technical resources to help you

- We investigate all quality concerns to ensure our products perform to the highest standards

If the product does not perform as described on this datasheet, we will offer a refund or replacement. For full details of the Abpromise, please visit <https://www.abcam.com/abpromise> or contact our technical team.

Terms and conditions

- Guarantee only valid for products bought direct from Abcam or one of our authorized distributors