

Product datasheet

Anti-MRPS15 antibody ab69901

1 Image

Overview

Product name	Anti-MRPS15 antibody
Description	Rabbit polyclonal to MRPS15
Host species	Rabbit
Tested applications	Suitable for: ELISA, WB
Species reactivity	Reacts with: Human
Immunogen	Synthetic peptide: LCIRVFQETQ KLKKRRRALK AAAAAQKQAK RRNPDSPAKA IPKTLKDSQ, corresponding to amino acids 209-258 of Human MRPS15 Run BLAST with ExPASy Run BLAST with NCBI
Positive control	721 B lymphoblast cell lysate.

Properties

Form	Liquid
Storage instructions	Shipped at 4°C. Upon delivery aliquot and store at -20°C. Avoid freeze / thaw cycles.
Storage buffer	Preservative: 0.09% Sodium azide Constituents: 2% Sucrose, PBS
Purity	Protein A purified
Clonality	Polyclonal
Isotype	IgG

Applications

Our [Abpromise guarantee](#) covers the use of **ab69901** in the following tested applications.

The application notes include recommended starting dilutions; optimal dilutions/concentrations should be determined by the end user.

Application	Abreviews	Notes
ELISA		Use at an assay dependent concentration. ELISA titre using peptide based assay: 1/62500.

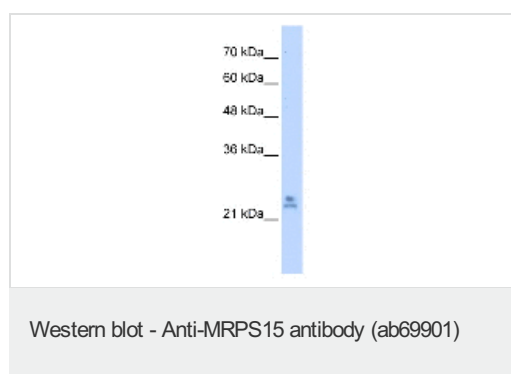
Application	Abreviews	Notes
WB		Use a concentration of 2.5 µg/ml. Detects a band of approximately 26 kDa (predicted molecular weight: 30 kDa). Good results were obtained when blocked with 5% non-fat dry milk in 0.05% PBS-T.

Target

Sequence similarities Belongs to the ribosomal protein S15P family.

Cellular localization Mitochondrion.

Images



Anti-MRPS15 antibody (ab69901) at 2.5 µg/ml + 721 B lymphoblast cell lysate at 10 µg

Secondary

anti-Rabbit IgG HRP at 1/50000 dilution

Predicted band size: 30 kDa

Observed band size: 26 kDa

[why is the actual band size different from the predicted?](#)

Additional bands at: 28 kDa. We are unsure as to the identity of these extra bands.

Please note: All products are "FOR RESEARCH USE ONLY AND ARE NOT INTENDED FOR DIAGNOSTIC OR THERAPEUTIC USE"

Our Abpromise to you: Quality guaranteed and expert technical support

- Replacement or refund for products not performing as stated on the datasheet
- Valid for 12 months from date of delivery
- Response to your inquiry within 24 hours
- We provide support in Chinese, English, French, German, Japanese and Spanish
- Extensive multi-media technical resources to help you
- We investigate all quality concerns to ensure our products perform to the highest standards

If the product does not perform as described on this datasheet, we will offer a refund or replacement. For full details of the Abpromise, please visit <https://www.abcam.com/abpromise> or contact our technical team.

Terms and conditions

- Guarantee only valid for products bought direct from Abcam or one of our authorized distributors