

Product datasheet

Anti-SAT2 antibody ab70429

2 Images

Overview

Product name	Anti-SAT2 antibody
Description	Mouse polyclonal to SAT2
Host species	Mouse
Specificity	This antibody is reactive against mammalian transfected lysate.
Tested applications	Suitable for: WB
Species reactivity	Reacts with: Human
Immunogen	SAT2 (NP_597998.1, 1 a.a. ~ 170 a.a) full-length human protein.
Positive control	Transfected 293T cell lysate and human placenta tissue lysate.

Properties

Form	Liquid
Storage instructions	Shipped at 4°C. Upon delivery aliquot and store at -20°C or -80°C. Avoid repeated freeze / thaw cycles.
Storage buffer	Preservative: None Constituents: 1X PBS, pH 7.2
Purity	Protein G purified
Clonality	Polyclonal
Isotype	IgG

Applications

Our [Abpromise guarantee](#) covers the use of **ab70429** in the following tested applications.

The application notes include recommended starting dilutions; optimal dilutions/concentrations should be determined by the end user.

Application	Abreviews	Notes
-------------	-----------	-------

WB

Application notes	WB: 1/500 - 1/1000. Detects bands of approximately 14 kDa (transfected lysate) and 19 kDa (tissue lysate) (predicted molecular weight: 19 kDa).
--------------------------	---

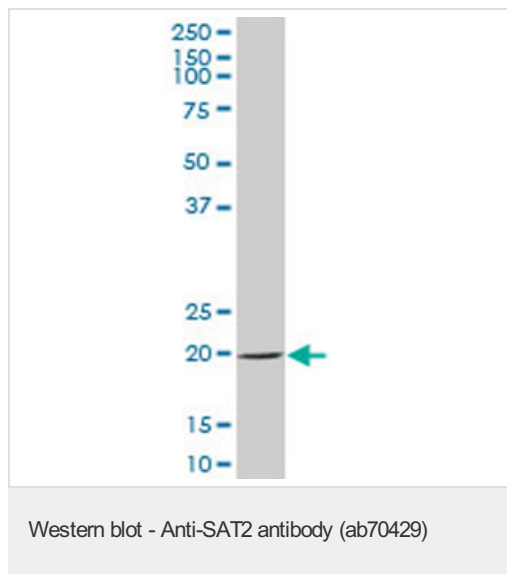
Not yet tested in other applications.

Optimal dilutions/concentrations should be determined by the end user.

Target

Function	Enzyme which catalyzes the acetylation of polyamines. Substrate specificity: norspermidine > spermidine = spermine >> N(1)acetylspermine = putrescine.
Tissue specificity	Widely expressed.
Pathway	Amine and polyamine degradation; putrescine degradation; N-acetylputrescine from putrescine: step 1/1.
Sequence similarities	Belongs to the acetyltransferase family. Contains 1 N-acetyltransferase domain.
Cellular localization	Cytoplasm. Intracellular organelles.

Images



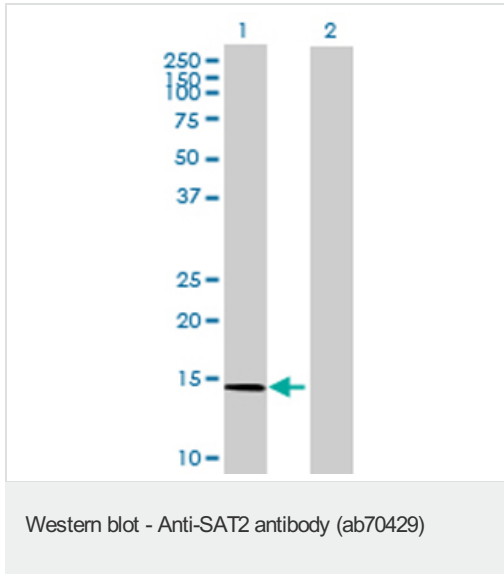
Anti-SAT2 antibody (ab70429) at 1/500
dilution + human placenta tissue lysate at 25
µg

Secondary

Goat Anti-Mouse IgG (H&L)-HRP Conjugate at
1/2500 dilution

Predicted band size: 19 kDa

Observed band size: 19 kDa



All lanes : Anti-SAT2 antibody (ab70429) at 1/500 dilution

Lane 1 : SAT2 transfected 293T cell lysate

Lane 2 : Non-transfected 293T cell lysate

Lysates/proteins at 25 µg per lane.

Secondary

All lanes : Goat Anti-Mouse IgG (H&L)-HRP

Conjugate at 1/2500 dilution

Predicted band size: 19 kDa

Observed band size: 14 kDa

Please note: All products are "FOR RESEARCH USE ONLY AND ARE NOT INTENDED FOR DIAGNOSTIC OR THERAPEUTIC USE"

Our Abpromise to you: Quality guaranteed and expert technical support

- Replacement or refund for products not performing as stated on the datasheet
- Valid for 12 months from date of delivery
- Response to your inquiry within 24 hours
- We provide support in Chinese, English, French, German, Japanese and Spanish
- Extensive multi-media technical resources to help you
- We investigate all quality concerns to ensure our products perform to the highest standards

If the product does not perform as described on this datasheet, we will offer a refund or replacement. For full details of the Abpromise, please visit <https://www.abcam.com/abpromise> or contact our technical team.

Terms and conditions

- Guarantee only valid for products bought direct from Abcam or one of our authorized distributors