

Product datasheet

Anti-hCG beta antibody [7H4] ab70884

1 Image

Overview

| | |
|----------------------------|--|
| Product name | Anti-hCG beta antibody [7H4] |
| Description | Mouse monoclonal [7H4] to hCG beta |
| Host species | Mouse |
| Tested applications | Suitable for: WB, ELISA |
| Species reactivity | Reacts with: Human |
| Immunogen | Human chorionic gonadotropin protein |
| Positive control | Human chorionic gonadotropin (hGC) protein. |
| General notes | Abcam is committed to meeting high standards of ethical manufacturing and as such, we will be discontinuing this product, which has been generated by the ascites method, within the next year. We are sorry for any inconvenience this may cause. If you would like help finding an alternative product, please do not hesitate to contact our scientific support team. |

Properties

| | |
|-----------------------------|---|
| Form | Liquid |
| Storage instructions | Shipped at 4°C. Upon delivery aliquot and store at -20°C. Avoid freeze / thaw cycles. |
| Storage buffer | Preservative: 0.03% Sodium azide Constituents: 0.01% BSA, 50% Glycerol, 0.87% Sodium chloride, HEPES |
| Clonality | Monoclonal |
| Clone number | 7H4 |
| Isotype | IgG1 |
| Light chain type | kappa |

Applications

Our [Abpromise guarantee](#) covers the use of **ab70884** in the following tested applications.

The application notes include recommended starting dilutions; optimal dilutions/concentrations should be determined by the end user.

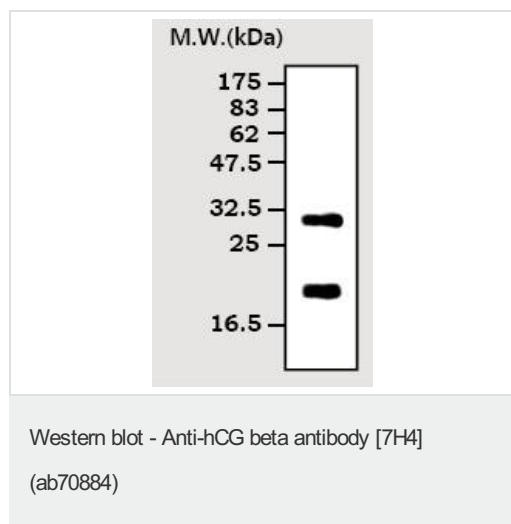
| Application | Abreviews | Notes |
|-------------|-----------|-------|
|-------------|-----------|-------|

| Application | Abreviews | Notes |
|-------------|-----------|--|
| WB | | 1/2000. Detects a band of approximately 18 kDa (predicted molecular weight: 18 kDa). |
| ELISA | | Use at an assay dependent dilution. |

Target

| | |
|------------------------------|--|
| Function | Stimulates the ovaries to synthesize the steroids that are essential for the maintenance of pregnancy. |
| Tissue specificity | Placenta. |
| Sequence similarities | Belongs to the glycoprotein hormones subunit beta family. |
| Developmental stage | Made by the first trimester placenta. |
| Cellular localization | Secreted. |

Images



Anti-hCG beta antibody [7H4] (ab70884) at 1/2000 dilution + Human chorionic gonadotropin protein

Predicted band size: 18 kDa

Observed band size: 18 kDa

Additional bands at: 30 kDa. We are unsure as to the identity of these extra bands.

Please note: All products are "FOR RESEARCH USE ONLY AND ARE NOT INTENDED FOR DIAGNOSTIC OR THERAPEUTIC USE"

Our Abpromise to you: Quality guaranteed and expert technical support

- Replacement or refund for products not performing as stated on the datasheet
- Valid for 12 months from date of delivery
- Response to your inquiry within 24 hours
- We provide support in Chinese, English, French, German, Japanese and Spanish
- Extensive multi-media technical resources to help you
- We investigate all quality concerns to ensure our products perform to the highest standards

If the product does not perform as described on this datasheet, we will offer a refund or replacement. For full details of the Abpromise, please visit <https://www.abcam.com/abpromise> or contact our technical team.

Terms and conditions

- Guarantee only valid for products bought direct from Abcam or one of our authorized distributors