

Product datasheet

Anti-TRPM8 antibody ab71245

★☆☆☆☆ 2 Abreviews 2 Images

Overview

Product name	Anti-TRPM8 antibody
Description	Rabbit polyclonal to TRPM8
Host species	Rabbit
Tested applications	Suitable for: WB, IHC-P, ELISA
Species reactivity	Reacts with: Human
Immunogen	A KLH conjugated synthetic peptide at the center(R536) of human TRPM8.
Positive control	Transfected/ non-transfected 293 cell lysates.

Properties

Form	Liquid
Storage instructions	Shipped at 4°C. Upon delivery aliquot and store at -20°C. Avoid freeze / thaw cycles.
Storage buffer	Preservative: 0.09% Sodium Azide Constituents: PBS
Purity	Ammonium Sulphate Precipitation
Purification notes	This antibody is prepared by Saturated Ammonium Sulfate (SAS) precipitation followed by dialysis against PBS.
Clonality	Polyclonal
Isotype	IgG

Applications

Our [Abpromise guarantee](#) covers the use of **ab71245** in the following tested applications.

The application notes include recommended starting dilutions; optimal dilutions/concentrations should be determined by the end user.

Application	Abreviews	Notes
WB		1/50 - 1/100. Detects a band of approximately 57, 128 kDa (predicted molecular weight: 128 kDa).
IHC-P	★☆☆☆☆	1/10 - 1/50.

Application	Abreviews	Notes
ELISA		1/1000.

Target

Function

Receptor-activated non-selective cation channel involved in detection of sensations such as coolness, by being activated by cold temperature below 25 degrees Celsius. Activated by icilin, eucalyptol, menthol, cold and modulation of intracellular pH. Involved in menthol sensation. Permeable for monovalent cations sodium, potassium, and cesium and divalent cation calcium. Temperature sensing is tightly linked to voltage-dependent gating. Activated upon depolarization, changes in temperature resulting in graded shifts of its voltage-dependent activation curves. The chemical agonists menthol functions as a gating modifier, shifting activation curves towards physiological membrane potentials. Temperature sensitivity arises from a tenfold difference in the activation energies associated with voltage-dependent opening and closing.

Tissue specificity

Expressed in prostate. Also expressed in most in prostate tumors. Also expressed in non-prostatic primary tumors such as colon, lung, breast and skin tumors.

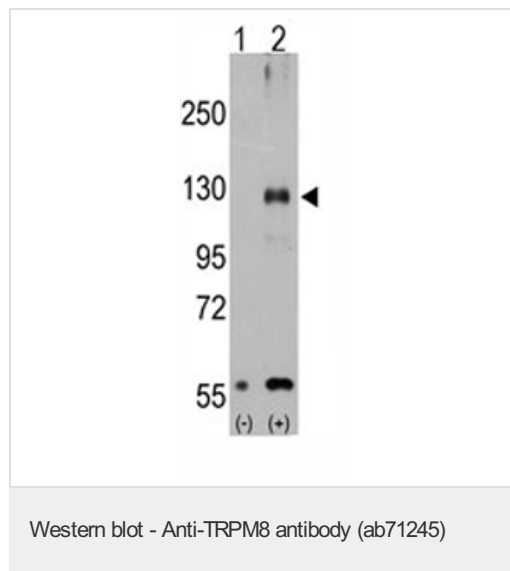
Sequence similarities

Belongs to the transient receptor (TC 1.A.4) family. LTrpC subfamily. TRPM8 sub-subfamily.

Cellular localization

Membrane.

Images



All lanes : Anti-TRPM8 antibody (ab71245) at 1/50 dilution

Lane 1 : Non-transfected 293 cell lysates

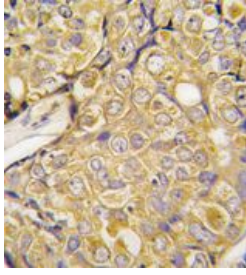
Lane 2 : TRPM8 transfected 293 cell lysates

Lysates/proteins at 2 µg per lane.

Predicted band size: 128 kDa

Observed band size: 128 kDa

Additional bands at: 57 kDa. We are unsure as to the identity of these extra bands.



ab71245 at 1/50 dilution staining TRPM8 in human prostate carcinoma tissue section by Immunohistochemistry (Formalin/ PFA fixed paraffin-embedded sections). A peroxidase conjugated secondary antibody was used followed by DAB staining.

Immunohistochemistry (Formalin/PFA-fixed paraffin-embedded sections) - Anti-TRPM8 antibody (ab71245)

Please note: All products are "FOR RESEARCH USE ONLY AND ARE NOT INTENDED FOR DIAGNOSTIC OR THERAPEUTIC USE"

Our Abpromise to you: Quality guaranteed and expert technical support

- Replacement or refund for products not performing as stated on the datasheet
- Valid for 12 months from date of delivery
- Response to your inquiry within 24 hours
- We provide support in Chinese, English, French, German, Japanese and Spanish
- Extensive multi-media technical resources to help you
- We investigate all quality concerns to ensure our products perform to the highest standards

If the product does not perform as described on this datasheet, we will offer a refund or replacement. For full details of the Abpromise, please visit <https://www.abcam.com/abpromise> or contact our technical team.

Terms and conditions

- Guarantee only valid for products bought direct from Abcam or one of our authorized distributors