

Product datasheet

Anti-PGK2 antibody - Aminoterminal end ab71323

2 Images

Overview

<b>Product name</b>	Anti-PGK2 antibody - Aminoterminal end
<b>Description</b>	Rabbit polyclonal to PGK2 - Aminoterminal end
<b>Host species</b>	Rabbit
<b>Tested applications</b>	<b>Suitable for:</b> WB, ELISA, IHC-P
<b>Species reactivity</b>	<b>Reacts with:</b> Human
<b>Immunogen</b>	Synthetic peptide from the N-terminal region of Human PGK2, conjugated to KLH
<b>Positive control</b>	HepG2 cell lysate; Hepatocellular carcinoma tissue.

Properties

<b>Form</b>	Liquid
<b>Storage instructions</b>	Shipped at 4°C. Upon delivery aliquot and store at -20°C. Avoid freeze / thaw cycles.
<b>Storage buffer</b>	Preservative: 0.09% Sodium Azide Constituents: PBS
<b>Purity</b>	Protein G purified
<b>Clonality</b>	Polyclonal
<b>Isotype</b>	IgG

Applications

Our [Abpromise guarantee](#) covers the use of **ab71323** in the following tested applications.

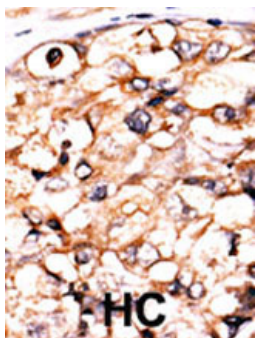
The application notes include recommended starting dilutions; optimal dilutions/concentrations should be determined by the end user.

Application	Abreviews	Notes
WB		1/100 - 1/500. Detects a band of approximately 50 kDa (predicted molecular weight: 45 kDa).
ELISA		1/1000.
IHC-P		1/50 - 1/100.

## Target

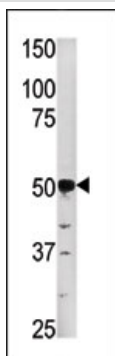
<b>Tissue specificity</b>	Testis specific.
<b>Pathway</b>	Carbohydrate degradation; glycolysis; pyruvate from D-glyceraldehyde 3-phosphate: step 2/5.
<b>Sequence similarities</b>	Belongs to the phosphoglycerate kinase family.
<b>Cellular localization</b>	Cytoplasm.

## Images



Human hepatocellular carcinoma tissue with ab71323 at 1/50 dilution. DAB staining.

Immunohistochemistry (Formalin/PFA-fixed paraffin-embedded sections) - Anti-PGK2 antibody - Aminoterminal end (ab71323)



Anti-PGK2 antibody - Aminoterminal end (ab71323) at 1/40 dilution + HepG2 cell lysate at 35 µg

**Predicted band size:** 45 kDa  
**Observed band size:** 50 kDa  
**Additional bands at:** 37 kDa, 40 kDa. We are unsure as to the identity of these extra bands.

Western blot - Anti-PGK2 antibody - Aminoterminal end (ab71323)

**Please note:** All products are "FOR RESEARCH USE ONLY AND ARE NOT INTENDED FOR DIAGNOSTIC OR THERAPEUTIC USE"

## Our Abpromise to you: Quality guaranteed and expert technical support

- Replacement or refund for products not performing as stated on the datasheet
- Valid for 12 months from date of delivery
- Response to your inquiry within 24 hours
- We provide support in Chinese, English, French, German, Japanese and Spanish

- Extensive multi-media technical resources to help you
- We investigate all quality concerns to ensure our products perform to the highest standards

If the product does not perform as described on this datasheet, we will offer a refund or replacement. For full details of the Abpromise, please visit <https://www.abcam.com/abpromise> or contact our technical team.

### **Terms and conditions**

---

- Guarantee only valid for products bought direct from Abcam or one of our authorized distributors