

Product datasheet

Anti-ASK1 antibody ab71430

1 Image

Overview

Product name	Anti-ASK1 antibody
Description	Rabbit polyclonal to ASK1
Host species	Rabbit
Tested applications	Suitable for: ELISA, WB
Species reactivity	Reacts with: Human
Immunogen	Synthetic peptide corresponding to amino acid residues surrounding S966 of human ASK1 conjugated to KLH
Positive control	293 cell lysates transiently transfected with the ASK1 gene.

Properties

Form	Liquid
Storage instructions	Shipped at 4°C. Upon delivery aliquot and store at -20°C. Avoid freeze / thaw cycles.
Storage buffer	Preservative: 0.09% Sodium Azide Constituents: PBS
Purity	Immunogen affinity purified
Purification notes	ab71430 is purified through a protein A column, followed by peptide affinity purification.
Clonality	Polyclonal
Isotype	IgG

Applications

Our [Abpromise guarantee](#) covers the use of **ab71430** in the following tested applications.

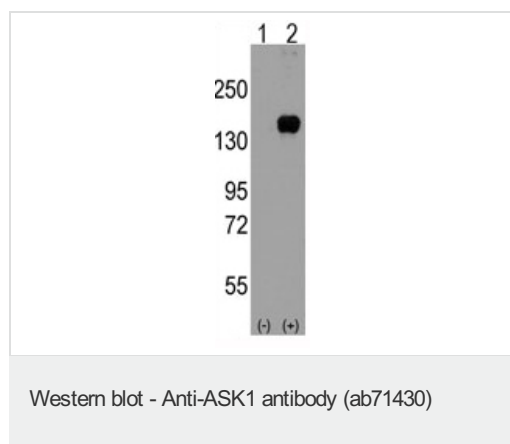
The application notes include recommended starting dilutions; optimal dilutions/concentrations should be determined by the end user.

Application	Abreviews	Notes
ELISA		1/1000.
WB		1/50 - 1/100. Detects a band of approximately 155 kDa (predicted molecular weight: 155 kDa).

Target

Function	Component of a protein kinase signal transduction cascade. Phosphorylates and activates MAP2K4 and MAP2K6, which in turn activate the JNK and p38 MAP kinases, respectively. Overexpression induces apoptotic cell death.
Tissue specificity	Abundantly expressed in heart and pancreas.
Sequence similarities	Belongs to the protein kinase superfamily. STE Ser/Thr protein kinase family. MAP kinase kinase kinase subfamily. Contains 1 protein kinase domain.
Post-translational modifications	Dephosphorylated and activated by PGAM5.

Images



All lanes : Anti-ASK1 antibody (ab71430) at 1/50 dilution

Lane 1 : Nontransfected 293 cell lysates

Lane 2 : 293 cell lysates transiently transfected with the ASK1 gene

Lysates/proteins at 2 µg per lane.

Predicted band size: 155 kDa

Observed band size: 155 kDa

Please note: All products are "FOR RESEARCH USE ONLY AND ARE NOT INTENDED FOR DIAGNOSTIC OR THERAPEUTIC USE"

Our Abpromise to you: Quality guaranteed and expert technical support

- Replacement or refund for products not performing as stated on the datasheet
- Valid for 12 months from date of delivery
- Response to your inquiry within 24 hours
- We provide support in Chinese, English, French, German, Japanese and Spanish
- Extensive multi-media technical resources to help you
- We investigate all quality concerns to ensure our products perform to the highest standards

If the product does not perform as described on this datasheet, we will offer a refund or replacement. For full details of the Abpromise, please visit <https://www.abcam.com/abpromise> or contact our technical team.

Terms and conditions

- Guarantee only valid for products bought direct from Abcam or one of our authorized distributors