


Product datasheet

Anti-TCF-4 antibody ab72586

2 References 1 Image

Overview

Product name	Anti-TCF-4 antibody
Description	Rabbit polyclonal to TCF-4
Host species	Rabbit
Specificity	Detects endogenous levels of total TCF4 protein.
Tested applications	Suitable for: WB, ELISA
Species reactivity	Reacts with: Mouse, Human Predicted to work with: Rat 
Immunogen	Synthetic peptide corresponding to Human TCF4 aa 581-630 (internal sequence). Database link: P15884 (Peptide available as ab101669)
Positive control	HUVEC extract

Properties

Form	Liquid
Storage instructions	Shipped at 4°C. Upon delivery aliquot and store at -20°C. Avoid freeze / thaw cycles.
Storage buffer	Preservative: 0.02% Sodium Azide Constituents: 50% Glycerol, PBS (without Mg ²⁺ and Ca ²⁺), 150mM Sodium chloride, pH 7.4
Purity	Immunogen affinity purified
Purification notes	Affinity-purified from rabbit antiserum by affinity-chromatography using epitope-specific immunogen.
Clonality	Polyclonal
Isotype	IgG

Applications

Our [Abpromise guarantee](#) covers the use of **ab72586** in the following tested applications.

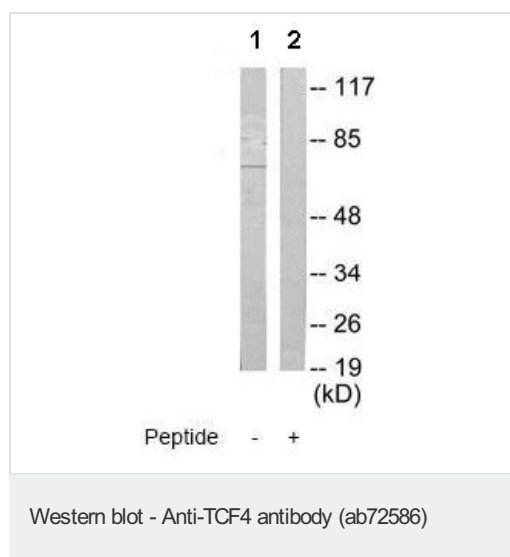
The application notes include recommended starting dilutions; optimal dilutions/concentrations should be determined by the end user.

Application	Abreviews	Notes
WB		1/500 - 1/1000. Detects a band of approximately 71 kDa (predicted molecular weight: 71 kDa).
ELISA		1/20000.

Target

Function	Transcription factor that binds to the immunoglobulin enhancer Mu-E5/KE5-motif. Binds to the E-box present in the somatostatin receptor 2 initiator element (SSTR2-INR) to activate transcription (By similarity). Preferentially binds to either 5'-ACANNTGT-3' or 5'-CCANNTGG-3'.
Tissue specificity	Expressed in adult heart, brain, placenta, skeletal muscle and to a lesser extent in the lung. In developing embryonic tissues, expression mostly occurs in the brain.
Involvement in disease	Defects in TCF4 are a cause of Pitt-Hopkins syndrome (PTHS) [MIM:610954]. PTHS is a rare syndromic encephalopathy characterized by severe psychomotor delay, epilepsy, daily bouts of diurnal hyperventilation starting in infancy, mild postnatal growth retardation, postnatal microcephaly, and distinctive facial features. Since most hitherto reported cases have been sporadic, with males and females equally affected, PTHS is regarded as an autosomal dominant condition.
Sequence similarities	Contains 1 basic helix-loop-helix (bHLH) domain.
Domain	the 9aaTAD motif is a transactivation domain present in a large number of yeast and animal transcription factors.
Cellular localization	Nucleus.

Images



All lanes : Anti-TCF-4 antibody (ab72586) at 1/500 dilution

Lane 1 : HUVEC extract

Lane 2 : HUVEC extract
with immunising peptide at 10 µg

Lysates/proteins at 30 µg per lane.

Predicted band size: 71 kDa

Observed band size: 71 kDa

Please note: All products are "FOR RESEARCH USE ONLY AND ARE NOT INTENDED FOR DIAGNOSTIC OR THERAPEUTIC USE"

Our Abpromise to you: Quality guaranteed and expert technical support

- Replacement or refund for products not performing as stated on the datasheet
- Valid for 12 months from date of delivery
- Response to your inquiry within 24 hours

- We provide support in Chinese, English, French, German, Japanese and Spanish
- Extensive multi-media technical resources to help you
- We investigate all quality concerns to ensure our products perform to the highest standards

If the product does not perform as described on this datasheet, we will offer a refund or replacement. For full details of the Abpromise, please visit <https://www.abcam.com/abpromise> or contact our technical team.

Terms and conditions

- Guarantee only valid for products bought direct from Abcam or one of our authorized distributors