

Product datasheet

Anti-PRR6 antibody ab72723

1 Image

Overview

<b>Product name</b>	Anti-PRR6 antibody
<b>Description</b>	Mouse polyclonal to PRR6
<b>Host species</b>	Mouse
<b>Tested applications</b>	<b>Suitable for:</b> WB
<b>Species reactivity</b>	<b>Reacts with:</b> Human
<b>Immunogen</b>	PRR6 (AAH52604, 1 a.a. ~ 275 a.a) full-length human protein.
<b>Positive control</b>	Transfected 293T cell lysate.

Properties

<b>Form</b>	Liquid
<b>Storage instructions</b>	Shipped at 4°C. Upon delivery aliquot and store at -20°C or -80°C. Avoid repeated freeze / thaw cycles.
<b>Storage buffer</b>	Preservative: None Constituents: PBS, pH 7.2
<b>Purity</b>	Protein A purified
<b>Clonality</b>	Polyclonal
<b>Isotype</b>	IgG

Applications

Our [Abpromise guarantee](#) covers the use of **ab72723** in the following tested applications.

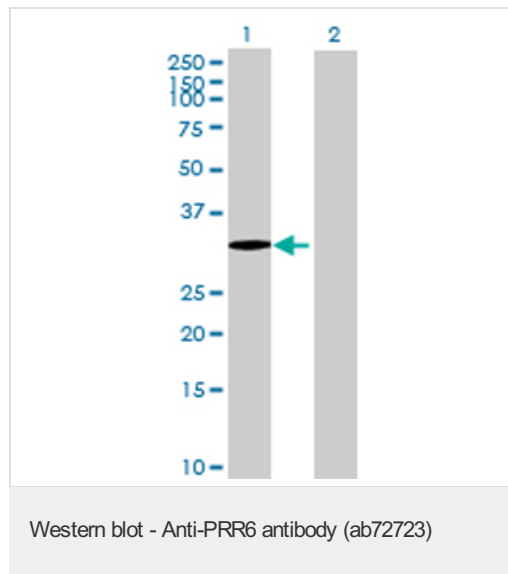
The application notes include recommended starting dilutions; optimal dilutions/concentrations should be determined by the end user.

Application	Abreviews	Notes
WB		1/500 - 1/1000. Detects a band of approximately 33 kDa (predicted molecular weight: 33 kDa).

Target

<b>Function</b>	Required for distribution of pericentromeric heterochromatin in interphase nuclei and for centromere formation and organization, chromosome alignment and cytokinesis.
<b>Sequence similarities</b>	Belongs to the gfa family.
<b>Cellular localization</b>	Chromosome > centromere > kinetochore. Nucleus. Cytoplasm > cytoskeleton > spindle. Enriched at the nuclear periphery and around the nucleolus. In mitotic cells, localizes to kinetochores from prometaphase to metaphase. At anaphase onset, transfers to the spindle midzone and then to the mid-body in telophase and cytokinesis.

## Images



**All lanes** : Anti-PRR6 antibody (ab72723) at 1/500 dilution

**Lane 1** : PRR6 transfected 293T cell lysate

**Lane 2** : Non-transfected 293T cell lysate

Lysates/proteins at 25 µg per lane.

### Secondary

**All lanes** : Goat anti-mouse IgG (H&L)-HRP conjugate at 1/2500 dilution

**Predicted band size:** 33 kDa

**Observed band size:** 33 kDa

**Please note:** All products are "FOR RESEARCH USE ONLY AND ARE NOT INTENDED FOR DIAGNOSTIC OR THERAPEUTIC USE"

## Our Abpromise to you: Quality guaranteed and expert technical support

- Replacement or refund for products not performing as stated on the datasheet
- Valid for 12 months from date of delivery
- Response to your inquiry within 24 hours
- We provide support in Chinese, English, French, German, Japanese and Spanish
- Extensive multi-media technical resources to help you
- We investigate all quality concerns to ensure our products perform to the highest standards

If the product does not perform as described on this datasheet, we will offer a refund or replacement. For full details of the Abpromise, please visit <https://www.abcam.com/abpromise> or contact our technical team.

## Terms and conditions

- Guarantee only valid for products bought direct from Abcam or one of our authorized distributors