

## Product datasheet

# Anti-U2AF1L3 antibody ab73033

1 Image

### Overview

<b>Product name</b>	Anti-U2AF1L3 antibody
<b>Description</b>	Mouse polyclonal to U2AF1L3
<b>Host species</b>	Mouse
<b>Tested applications</b>	<b>Suitable for:</b> ICC/IF, WB
<b>Species reactivity</b>	<b>Reacts with:</b> Human
<b>Immunogen</b>	Full length human U2AF1L3 protein, isoform 2 (Q8WU68-2)
<b>Positive control</b>	U2AF1L3 transfected 293T cell lysate

### Properties

<b>Form</b>	Liquid
<b>Storage instructions</b>	Shipped at 4°C. Upon delivery aliquot and store at -20°C or -80°C. Avoid repeated freeze / thaw cycles.
<b>Storage buffer</b>	Preservative: None Constituents: PBS, pH 7.2
<b>Purity</b>	Protein A purified
<b>Clonality</b>	Polyclonal
<b>Isotype</b>	IgG

### Applications

Our [Abpromise guarantee](#) covers the use of **ab73033** in the following tested applications.

The application notes include recommended starting dilutions; optimal dilutions/concentrations should be determined by the end user.

Application	Abreviews	Notes
ICC/IF		
WB		

<b>Application notes</b>	ICC/IF: Use at a concentration of 10 µg/ml. Note: this antibody requires purification for this application
--------------------------	---

WB: 1/500 - 1/1000. Predicted molecular weight: isoform 1, 25 kDa; isoform 2, 22 kDa.

Not yet tested in other applications.

Optimal dilutions/concentrations should be determined by the end user.

## Target

### Function

RNA-binding protein that function as a pre-mRNA splicing factor. Plays a critical role in both constitutive and enhancer-dependent splicing by mediating protein-protein interactions and protein-RNA interactions required for accurate 3'-splice site selection. Acts by enhancing the binding of U2AF2 to weak pyrimidine tracts. Also participates in the regulation of alternative pre-mRNA splicing. Activates exon 5 skipping of PTPRC during T cell activation; an event reversed by GFI1. Binds to RNA at the AG dinucleotide at the 3'-splice site.

### Tissue specificity

Isoform 2 is widely expressed. Isoform 3 is highly expressed in heart, brain and lung, lower expressed in thymus and much lower expressed in peripheral blood leukocytes.

### Sequence similarities

Belongs to the splicing factor SR family.  
Contains 2 C3H1-type zinc fingers.  
Contains 1 RRM (RNA recognition motif) domain.

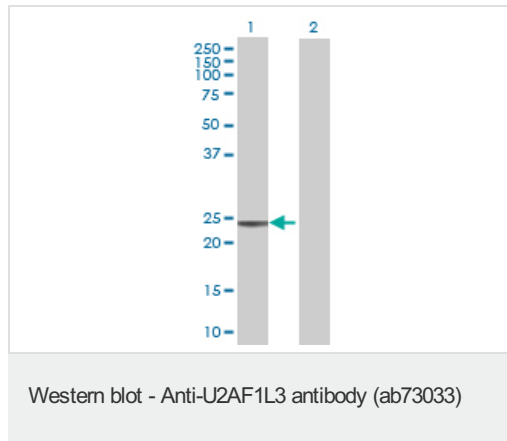
### Domain

The second zinc finger is necessary for interaction with GFI1 and for alternative pre-mRNA splicing events.

### Cellular localization

Nucleus. Nucleus speckle.

## Images



**All lanes :** Anti-U2AF1L3 antibody (ab73033) at 1/500 dilution

**Lane 1 :** U2AF1L3 transfected 293T cell lysate

**Lane 2 :** Non transfected 293T cell lysate

Lysates/proteins at 25 µg per lane.

### Secondary

**All lanes :** Goat Anti-Mouse IgG (H&L)-HRP Conjugate at 1/2500 dilution

**Predicted band size:** 22 kDa

**Observed band size:** 22 kDa

[why is the actual band size different from the predicted?](#)

Note: Predicted molecular weight for the isoform 1 full length protein is 25 kDa, whereas that for isoform 2 (the immunogen) is 22 kDa.

## **Our Abpromise to you: Quality guaranteed and expert technical support**

---

- Replacement or refund for products not performing as stated on the datasheet
- Valid for 12 months from date of delivery
- Response to your inquiry within 24 hours
  
- We provide support in Chinese, English, French, German, Japanese and Spanish
- Extensive multi-media technical resources to help you
- We investigate all quality concerns to ensure our products perform to the highest standards

If the product does not perform as described on this datasheet, we will offer a refund or replacement. For full details of the Abpromise, please visit <https://www.abcam.com/abpromise> or contact our technical team.

## **Terms and conditions**

---

- Guarantee only valid for products bought direct from Abcam or one of our authorized distributors