

Product datasheet

Anti-Topoisomerase II alpha antibody ab73724

2 Images

Overview

<b>Product name</b>	Anti-Topoisomerase II alpha antibody
<b>Description</b>	Rabbit polyclonal to Topoisomerase II alpha
<b>Host species</b>	Rabbit
<b>Specificity</b>	This antibody detects endogenous levels of total Topoisomerase II alpha protein.
<b>Tested applications</b>	<b>Suitable for:</b> WB, ELISA, IHC-P
<b>Species reactivity</b>	<b>Reacts with:</b> Human
<b>Immunogen</b>	A synthesized non-phosphopeptide derived from human Topoisomerase II alpha around the phosphorylation site of serine 1106 (E-E-S <sup>P</sup> -D-N).
<b>Positive control</b>	Human breast carcinoma tissue and extracts from LOVO cells.

Properties

<b>Form</b>	Liquid
<b>Storage instructions</b>	Shipped at 4°C. Upon delivery aliquot and store at -20°C. Avoid freeze / thaw cycles.
<b>Storage buffer</b>	Preservative: 0.02% Sodium Azide Constituents: 50% Glycerol, PBS, 150mM Sodium chloride, pH 7.4
<b>Purity</b>	Immunogen affinity purified
<b>Clonality</b>	Polyclonal
<b>Isotype</b>	IgG

Applications

Our [Abpromise guarantee](#) covers the use of **ab73724** in the following tested applications.

The application notes include recommended starting dilutions; optimal dilutions/concentrations should be determined by the end user.

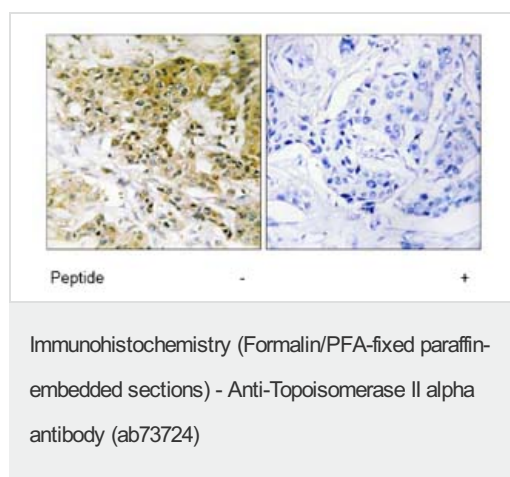
Application	Abreviews	Notes
WB		1/500 - 1/1000. Detects a band of approximately 174 kDa (predicted molecular weight: 174 kDa).
ELISA		1/5000.

Application	Abreviews	Notes
IHC-P		Use at an assay dependent concentration.

## Target

<b>Function</b>	Control of topological states of DNA by transient breakage and subsequent rejoining of DNA strands. Topoisomerase II makes double-strand breaks.
<b>Sequence similarities</b>	Belongs to the type II topoisomerase family.
<b>Post-translational modifications</b>	Phosphorylation has no effect on catalytic activity.
<b>Cellular localization</b>	Cytoplasm. Nucleus > nucleoplasm. Generally located in the nucleoplasm.

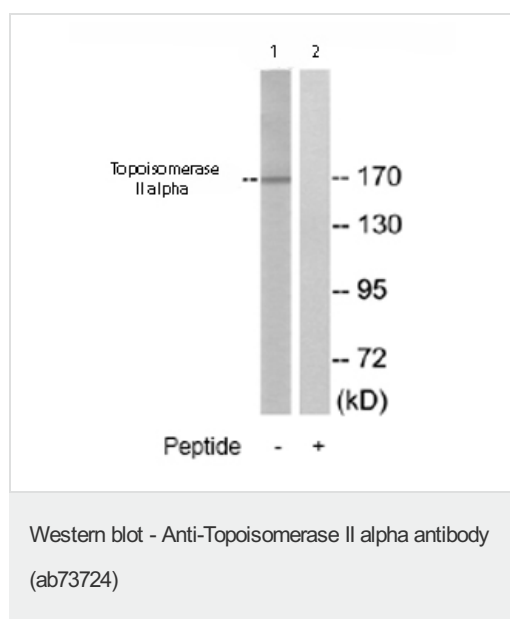
## Images



Immunohistochemistry analysis of paraffin-embedded human breast carcinoma tissue using ab73724 at a 1:50 dilution.

Left image un-treated.

Right image treated with immunizing peptide.



**All lanes** : Anti-Topoisomerase II alpha antibody (ab73724) at 1/500 dilution

**Lane 1** : Extracts from LOVO cells

**Lane 2** : Extracts from LOVO cells plus 10µg immunizing peptide

Lysates/proteins at 30 µg per lane.

**Predicted band size:** 174 kDa

**Observed band size:** 174 kDa

### **Our Abpromise to you: Quality guaranteed and expert technical support**

---

- Replacement or refund for products not performing as stated on the datasheet
- Valid for 12 months from date of delivery
- Response to your inquiry within 24 hours
  
- We provide support in Chinese, English, French, German, Japanese and Spanish
- Extensive multi-media technical resources to help you
- We investigate all quality concerns to ensure our products perform to the highest standards

If the product does not perform as described on this datasheet, we will offer a refund or replacement. For full details of the Abpromise, please visit <https://www.abcam.com/abpromise> or contact our technical team.

### **Terms and conditions**

---

- Guarantee only valid for products bought direct from Abcam or one of our authorized distributors