


Product datasheet

Anti-LRP3 antibody ab74100

1 Image

Overview

Product name	Anti-LRP3 antibody
Description	Rabbit polyclonal to LRP3
Host species	Rabbit
Specificity	ab74100 detects endogenous levels of total LRP3 protein.
Tested applications	Suitable for: WB, ELISA
Species reactivity	Reacts with: Mouse, Human Predicted to work with: Rat 
Immunogen	Synthesized peptide derived from an internal sequence of human LRP3.
Positive control	Extracts from RAW264.7 cells

Properties

Form	Liquid
Storage instructions	Shipped at 4°C. Upon delivery aliquot and store at -20°C. Avoid freeze / thaw cycles.
Storage buffer	Preservative: 0.02% Sodium Azide Constituents: 50% Glycerol, PBS (without Mg ²⁺ and Ca ²⁺), 150mM Sodium chloride, pH 7.4
Purity	Immunogen affinity purified
Purification notes	The antibody was affinity purified from rabbit antiserum by affinity chromatography using epitope specific immunogen.
Clonality	Polyclonal
Isotype	IgG

Applications

Our [Abpromise guarantee](#) covers the use of **ab74100** in the following tested applications.

The application notes include recommended starting dilutions; optimal dilutions/concentrations should be determined by the end user.

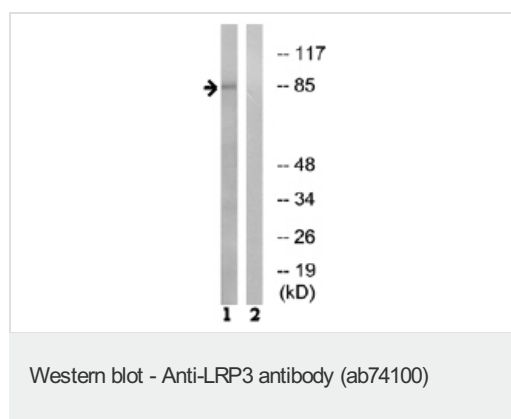
Application	Abreviews	Notes
WB		1/500 - 1/1000. Predicted molecular weight: 83 kDa.

Application	Abreviews	Notes
ELISA		1/40000.

Target

Function	Probable receptor, which may be involved in the internalization of lipophilic molecules and/or signal transduction. Its precise role is however unclear, since it does not bind to very low density lipoprotein (VLDL) or to LRPAP1 in vitro.
Tissue specificity	Widely expressed. Highly expressed in skeletal muscle and ovary. Expressed at intermediate level in heart, brain, liver, pancreas, prostate and small intestine. Weakly expressed in testis, colon and leukocyte.
Sequence similarities	Belongs to the LDLR family. Contains 2 CUB domains. Contains 4 LDL-receptor class A domains.
Cellular localization	Membrane. Membrane > coated pit.

Images



All lanes : Anti-LRP3 antibody (ab74100) at 1/500 dilution

Lane 1 : Extracts from RAW264.7 cells with no peptide

Lane 2 : Extracts from RAW264.7 cells with immunizing peptide at 5 µg

Lysates/proteins at 5 µg per lane.

Predicted band size: 83 kDa

Observed band size: 83 kDa

Please note: All products are "FOR RESEARCH USE ONLY AND ARE NOT INTENDED FOR DIAGNOSTIC OR THERAPEUTIC USE"

Our Abpromise to you: Quality guaranteed and expert technical support

- Replacement or refund for products not performing as stated on the datasheet
- Valid for 12 months from date of delivery
- Response to your inquiry within 24 hours
- We provide support in Chinese, English, French, German, Japanese and Spanish
- Extensive multi-media technical resources to help you
- We investigate all quality concerns to ensure our products perform to the highest standards

If the product does not perform as described on this datasheet, we will offer a refund or replacement. For full details of the Abpromise,

please visit <https://www.abcam.com/abpromise> or contact our technical team.

Terms and conditions

- Guarantee only valid for products bought direct from Abcam or one of our authorized distributors