


Product datasheet

Anti-TRIM29 antibody ab74193

2 Images

Overview

|                            |  |
|----------------------------|--|
| <b>Product name</b>        | Anti-TRIM29 antibody   |
| <b>Description</b>         | Rabbit polyclonal to TRIM29  |
| <b>Host species</b>        | Rabbit   |
| <b>Tested applications</b> | <b>Suitable for:</b> IHC-P, IP<br><b>Unsuitable for:</b> WB  |
| <b>Species reactivity</b>  | <b>Reacts with:</b> Human<br><b>Predicted to work with:</b> Cow, Pig, Rhesus monkey, Gorilla, Orangutan, Bat, Elephant  |
| <b>Immunogen</b>           | Synthetic peptide corresponding to a region between residues 538 and 588 of human TRIM29 (NP_036233.2)   |
| <b>Positive control</b>    | HeLa whole cell lysate.  |

Properties

|                             |  |
|-----------------------------|--|
| <b>Form</b>                 | Liquid   |
| <b>Storage instructions</b> | Shipped at 4°C. Upon delivery aliquot and store at -20°C. Avoid freeze / thaw cycles.            |
| <b>Storage buffer</b>       | Preservative: 0.09% Sodium azide<br>Constituents: 1.815% Tris, 1.764% Sodium citrate, 0.021% PBS |
| <b>Purity</b>               | Immunogen affinity purified  |
| <b>Purification notes</b>   | ab74193 was affinity purified using an epitope specific to TRIM29 immobilized on solid support.  |
| <b>Clonality</b>            | Polyclonal   |
| <b>Isotype</b>              | IgG  |

Applications

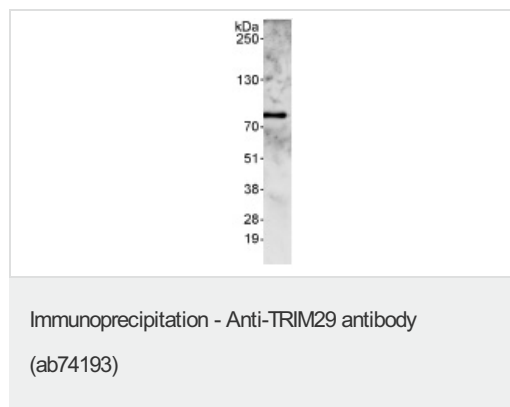
Our [Abpromise guarantee](#) covers the use of **ab74193** in the following tested applications.

The application notes include recommended starting dilutions; optimal dilutions/concentrations should be determined by the end user.

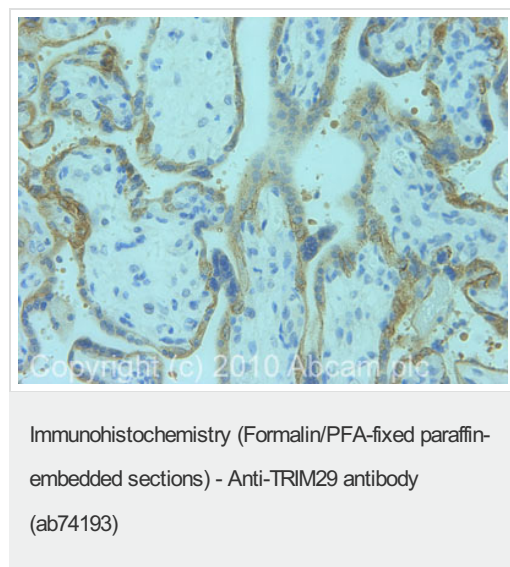
| Application | Abreviews | Notes  |
|-------------|-----------|--|
| IHC-P       |           | Use a concentration of 1 µg/ml. Perform heat mediated antigen retrieval with citrate buffer pH 6 before commencing with IHC staining protocol. |

| Application                             | Abreviews | Notes   |
|---|-----------|---|
| IP                                      |           | Use at 2-5 µg/mg of lysate.   |
| <b>Application notes</b>                |           | Is unsuitable for WB.   |
| <b>Target</b>                           |           |   |
| <b>Function</b>                         |           | It is able to complement the radiosensitivity defect of an ataxia telangiectasia (AT) fibroblast cell line. |
| <b>Tissue specificity</b>               |           | Expressed in placenta, prostate and thymus.   |
| <b>Sequence similarities</b>            |           | Contains 1 B box-type zinc finger.  |
| <b>Post-translational modifications</b> |           | Constitutively phosphorylated by PKC on serine/threonine in A431 cells.                                     |
| <b>Cellular localization</b>            |           | Cytoplasm. Colocalizes with intermediate filaments.   |

## Images



Detection of TRIM29 by Western Blot of Immunoprecipitate. ab74193 at 1 µg/ml staining TRIM29 in HeLa whole cell lysate immunoprecipitated using ab74193 at 3 µg/mg lysate (1 mg/IP; 20% of IP loaded/lane).  
Detection: Chemiluminescence with exposure time of 10 seconds.



IHC image of ab74193 staining in human placenta formalin fixed paraffin embedded tissue section, performed on a Leica Bond™ system using the standard protocol F. The section was pre-treated using heat mediated antigen retrieval with sodium citrate buffer (pH6, epitope retrieval solution 1) for 20 mins. The section was then incubated with ab74193, 1 µg/ml, for 15 mins at room temperature and detected using an HRP conjugated compact polymer system. DAB was used as the chromogen. The section was then counterstained with haematoxylin and mounted with DPX.

For other IHC staining systems (automated and non-automated) customers should optimize variable parameters such as antigen retrieval conditions, primary antibody concentration and antibody incubation times.

### **Our Abpromise to you: Quality guaranteed and expert technical support**

---

- Replacement or refund for products not performing as stated on the datasheet
- Valid for 12 months from date of delivery
- Response to your inquiry within 24 hours
  
- We provide support in Chinese, English, French, German, Japanese and Spanish
- Extensive multi-media technical resources to help you
- We investigate all quality concerns to ensure our products perform to the highest standards

If the product does not perform as described on this datasheet, we will offer a refund or replacement. For full details of the Abpromise, please visit <https://www.abcam.com/abpromise> or contact our technical team.

### **Terms and conditions**

---

- Guarantee only valid for products bought direct from Abcam or one of our authorized distributors