

## Product datasheet

# Anti-DECR1 antibody ab76630

★★★★★ 2 Abreviews 2 Images

### Overview

<b>Product name</b>	Anti-DECR1 antibody
<b>Description</b>	Mouse monoclonal to DECR1
<b>Host species</b>	Mouse
<b>Tested applications</b>	<b>Suitable for:</b> WB, ELISA
<b>Species reactivity</b>	<b>Reacts with:</b> Human <b>Predicted to work with:</b> Mouse, Rat, Horse, Cow, Dog, Pig, Chimpanzee, Rhesus monkey
<b>Immunogen</b>	Recombinant fragment: NVIQPGPIKT KGAFSRLDPT GTFEKEMIGR IPCGRLGTVE ELANLAAFLC SDYASWINGA VIKFDGGEEV LISGEFNDLR KVTKEQWDTI EELIRKTKGS, corresponding to amino acids 236-336 of Human DECR1 (NP_001350) with tag. <a href="#">Run BLAST with ExPASy</a> <a href="#">Run BLAST with NCBI</a>
<b>Positive control</b>	HepG2 cell lysate; Recombinant tagged human DECR1 fragment.

### Properties

<b>Form</b>	Liquid
<b>Storage instructions</b>	Shipped at 4°C. Upon delivery aliquot. Store at -20°C or -80°C. Avoid freeze / thaw cycle.
<b>Storage buffer</b>	Preservative: None Constituents: 1X PBS, pH 7.2
<b>Purity</b>	Protein A purified
<b>Clonality</b>	Monoclonal
<b>Isotype</b>	IgG2a
<b>Light chain type</b>	kappa

### Applications

Our [Abpromise guarantee](#) covers the use of **ab76630** in the following tested applications.

The application notes include recommended starting dilutions; optimal dilutions/concentrations should be determined by the end user.

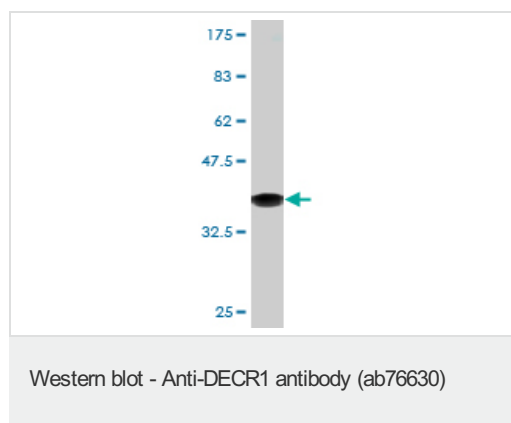
Application	Abreviews	Notes
WB	★★★★★	Use a concentration of 1 - 5 µg/ml. Predicted molecular weight: 36 kDa.

Application	Abreviews	Notes
ELISA		Use at an assay dependent dilution.

## Target

<b>Function</b>	Auxiliary enzyme of beta-oxidation. It participates in the metabolism of unsaturated fatty enoyl-CoA esters having double bonds in both even- and odd-numbered positions. Catalyzes the NADP-dependent reduction of 2,4-dienoyl-CoA to yield trans-3-enoyl-CoA.
<b>Tissue specificity</b>	Heart = liver = pancreas > kidney >> skeletal muscle = lung.
<b>Sequence similarities</b>	Belongs to the short-chain dehydrogenases/reductases (SDR) family. 2,4-dienoyl-CoA reductase subfamily.
<b>Cellular localization</b>	Mitochondrion.

## Images



Anti-DEC1 antibody (ab76630) at 1 µg/ml + Recombinant tagged human DEC1 fragment at 0.2 µg

### Secondary

Goat Anti-Mouse IgG (H&L)-HRP at 1/5000 dilution

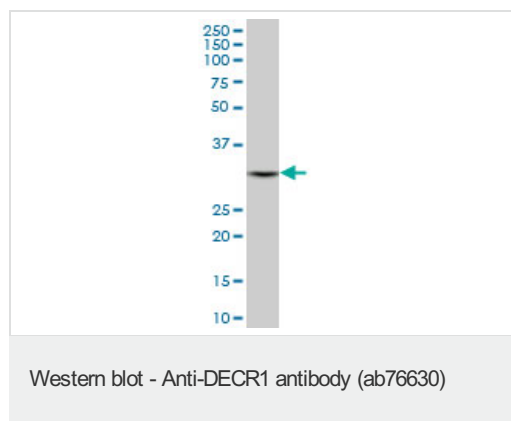
**Predicted band size:** 36 kDa

**Observed band size:** 37 kDa

[why is the actual band size different from the predicted?](#)

Western blot against tagged recombinant protein immunogen.

Predicted band size of immunogen is 37kDa.



Anti-DEC1 antibody (ab76630) at 1 µg/ml + HepG2 cell lysate at 25 µg

### Secondary

Goat Anti-Mouse IgG (H&L)-HRP at 1/2500 dilution

**Predicted band size:** 36 kDa

**Observed band size:** 34 kDa [why is the actual band size different from the predicted?](#)

---

### **Our Abpromise to you: Quality guaranteed and expert technical support**

---

- Replacement or refund for products not performing as stated on the datasheet
- Valid for 12 months from date of delivery
- Response to your inquiry within 24 hours
  
- We provide support in Chinese, English, French, German, Japanese and Spanish
- Extensive multi-media technical resources to help you
- We investigate all quality concerns to ensure our products perform to the highest standards

If the product does not perform as described on this datasheet, we will offer a refund or replacement. For full details of the Abpromise, please visit <https://www.abcam.com/abpromise> or contact our technical team.

### **Terms and conditions**

---

- Guarantee only valid for products bought direct from Abcam or one of our authorized distributors