

Product datasheet

Anti-Fibrillarin antibody ab76660

1 Image

Overview

|                            |  |
|----------------------------|--|
| <b>Product name</b>        | Anti-Fibrillarin antibody  |
| <b>Description</b>         | Rabbit polyclonal to Fibrillarin   |
| <b>Host species</b>        | Rabbit   |
| <b>Tested applications</b> | <b>Suitable for:</b> WB, ELISA   |
| <b>Species reactivity</b>  | <b>Reacts with:</b> Human  |
| <b>Immunogen</b>           | A KLH conjugated synthetic peptide selected from the center region of human Fibrillarin. |
| <b>Positive control</b>    | K562 cell line lysates   |

Properties

|                             |   |
|-----------------------------|---|
| <b>Form</b>                 | Liquid  |
| <b>Storage instructions</b> | Shipped at 4°C. Upon delivery aliquot and store at -20°C. Avoid freeze / thaw cycles.                         |
| <b>Storage buffer</b>       | Preservative: 0.09% Sodium Azide<br>Constituents: PBS   |
| <b>Purity</b>               | Ammonium Sulphate Precipitation   |
| <b>Purification notes</b>   | This antibody is prepared by Saturated Ammonium Sulfate (SAS) precipitation followed by dialysis against PBS. |
| <b>Clonality</b>            | Polyclonal  |
| <b>Isotype</b>              | IgG   |

Applications

Our [Abpromise guarantee](#) covers the use of **ab76660** in the following tested applications.

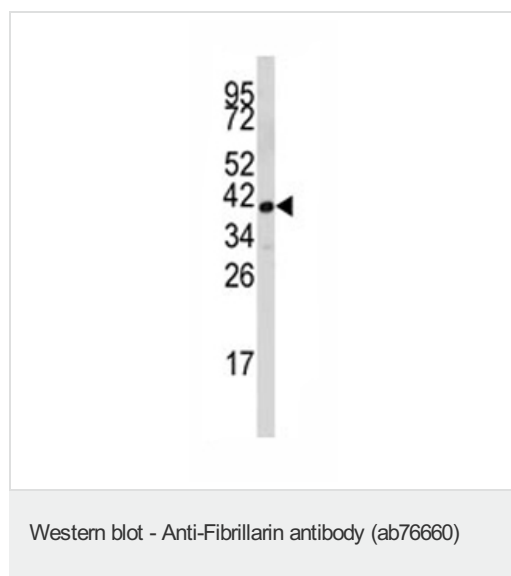
The application notes include recommended starting dilutions; optimal dilutions/concentrations should be determined by the end user.

| Application | Abreviews | Notes  |
|-------------|-----------|--|
| WB          |           | 1/50 - 1/100. Detects a band of approximately 40 kDa (predicted molecular weight: 34 kDa). |
| ELISA       |           | 1/1000.  |

## Target

|   |  |
|---|--|
| <b>Function</b>                         | S-adenosyl-L-methionine-dependent methyltransferase that has the ability to methylate both RNAs and proteins. Involved in pre-rRNA processing by catalyzing the site-specific 2'-hydroxyl methylation of ribose moieties in pre-ribosomal RNA. Site specificity is provided by a guide RNA that base pairs with the substrate. Methylation occurs at a characteristic distance from the sequence involved in base pairing with the guide RNA. Also acts as a protein methyltransferase by mediating methylation of 'Gln-105' of histone H2A (H2AQ104me), a modification that impairs binding of the FACT complex and is specifically present at 35S ribosomal DNA locus (PubMed:24352239). |
| <b>Sequence similarities</b>            | Belongs to the methyltransferase superfamily. Fibrillarin family.  |
| <b>Post-translational modifications</b> | By homology to other fibrillarins, some or all of the N-terminal domain arginines are modified to asymmetric dimethylarginine (DMA).   |
| <b>Cellular localization</b>            | Nucleus, nucleolus. Fibrillar region of the nucleolus.   |

## Images



Anti-Fibrillarin antibody (ab76660) at 1/50 dilution + K562 cell line lysates at 35 µg

**Predicted band size:** 34 kDa

**Observed band size:** 40 kDa

**Please note:** All products are "FOR RESEARCH USE ONLY AND ARE NOT INTENDED FOR DIAGNOSTIC OR THERAPEUTIC USE"

## Our Abpromise to you: Quality guaranteed and expert technical support

- Replacement or refund for products not performing as stated on the datasheet
- Valid for 12 months from date of delivery
- Response to your inquiry within 24 hours
- We provide support in Chinese, English, French, German, Japanese and Spanish
- Extensive multi-media technical resources to help you
- We investigate all quality concerns to ensure our products perform to the highest standards

If the product does not perform as described on this datasheet, we will offer a refund or replacement. For full details of the Abpromise, please visit <https://www.abcam.com/abpromise> or contact our technical team.

## Terms and conditions

---

- Guarantee only valid for products bought direct from Abcam or one of our authorized distributors