


Product datasheet

Anti-MASH1/Achaete-scute homolog 1 antibody ab76987

[2 Images](#)

Overview

Product name	Anti-MASH1/Achaete-scute homolog 1 antibody
Description	Mouse monoclonal to MASH1/Achaete-scute homolog 1
Host species	Mouse
Tested applications	Suitable for: WB, ELISA
Species reactivity	Reacts with: Human Predicted to work with: Mouse, Rat, Chicken, Xenopus laevis, Zebrafish 
Immunogen	Recombinant fragment: GFATLREHVP NGAANKKMSK VETLRSVEY IRALQQLLDE HDAVSAAFQA GVLSP TISPN YSNDLNSMAG SPVSSYSSDE GSYDPLSPEE QELLDFTNWF, corresponding to amino acids 137-237 of Human Achaete-scute homolog 1 (NP_004307) with tag. Run BLAST with ExPASy Run BLAST with NCBI
Positive control	Achaete-scute homolog 1 transfected 293T cell lysate. Recombinant tagged human Achaete-scute homolog 1 fragment.

Properties

Form	Liquid
Storage instructions	Shipped at 4°C. Upon delivery aliquot. Store at -20°C or -80°C. Avoid freeze / thaw cycle.
Storage buffer	Preservative: None Constituents: 1X PBS, pH 7.2
Purity	Protein A purified
Clonality	Monoclonal
Isotype	IgG2a
Light chain type	kappa

Applications

Our [Abpromise guarantee](#) covers the use of **ab76987** in the following tested applications.

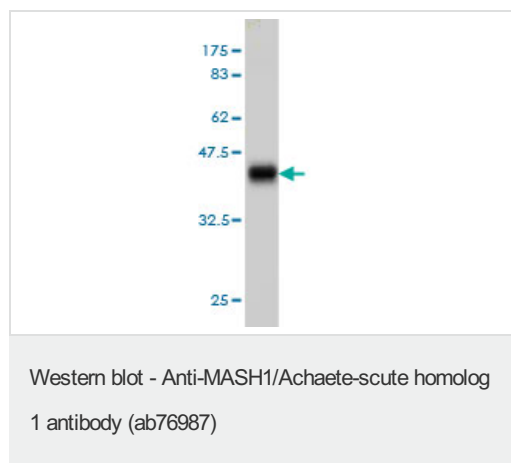
The application notes include recommended starting dilutions; optimal dilutions/concentrations should be determined by the end user.

Application	Abreviews	Notes
WB		Use a concentration of 1 - 5 µg/ml. Predicted molecular weight: 25 kDa.
ELISA		Use at an assay dependent dilution. Detection limit for recombinant tagged Achaete-scute homolog 1 is approximately 1ng/ml if used as a capture antibody.

Target

Function	May play a role at early stages of development of specific neural lineages in most regions of the CNS, and of several lineages in the PNS. Essential for the generation of olfactory and autonomic neurons. Activates transcription by binding to the E box (5'-CANNTG-3').
Sequence similarities	Contains 1 basic helix-loop-helix (bHLH) domain.
Cellular localization	Nucleus.

Images



Anti-MASH1/Achaete-scute homolog 1 antibody (ab76987) at 5 µg/ml + Recombinant tagged human Achaete-scute homolog 1 fragment at 0.2 µg

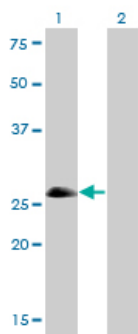
Secondary

Goat Anti-Mouse IgG (H&L)-HRP Conjugate at 1/5000 dilution

Predicted band size: 25 kDa

Observed band size: 42 kDa

Western blot against tagged recombinant protein immunogen. Predicted band size of immunogen is 37 kDa.



Western blot - Anti-MASH1/Achaete-scute homolog 1 antibody (ab76987)

All lanes : Anti-MASH1/Achaete-scute homolog 1 antibody (ab76987) at 5 µg/ml

Lane 1 : Achaete-scute homolog 1 transfected 293T cell lysate

Lane 2 : Non-transfected 293T cell lysate

Lysates/proteins at 25 µg per lane.

Secondary

All lanes : Goat Anti-Mouse IgG (H&L)-HRP Conjugate at 1/2500 dilution

Predicted band size: 25 kDa

Observed band size: 27 kDa

Please note: All products are "FOR RESEARCH USE ONLY AND ARE NOT INTENDED FOR DIAGNOSTIC OR THERAPEUTIC USE"

Our Abpromise to you: Quality guaranteed and expert technical support

- Replacement or refund for products not performing as stated on the datasheet
- Valid for 12 months from date of delivery
- Response to your inquiry within 24 hours
- We provide support in Chinese, English, French, German, Japanese and Spanish
- Extensive multi-media technical resources to help you
- We investigate all quality concerns to ensure our products perform to the highest standards

If the product does not perform as described on this datasheet, we will offer a refund or replacement. For full details of the Abpromise, please visit <https://www.abcam.com/abpromise> or contact our technical team.

Terms and conditions

- Guarantee only valid for products bought direct from Abcam or one of our authorized distributors