

Product datasheet

Anti-Acetylcholinesterase antibody [AE-2] ab77959

1 Abreviews 1 Image

Overview

<b>Product name</b>	Anti-Acetylcholinesterase antibody [AE-2]
<b>Description</b>	Mouse monoclonal [AE-2] to Acetylcholinesterase
<b>Host species</b>	Mouse
<b>Tested applications</b>	<b>Suitable for:</b> Flow Cyt, WB, IP, IHC-FoFr
<b>Species reactivity</b>	<b>Reacts with:</b> Rat, Human, Monkey
<b>Immunogen</b>	Full length native Acetylcholinesterase protein (purified from Human erythrocyte)
<b>Positive control</b>	SKBR-3 cell lysate.

Properties

<b>Form</b>	Liquid
<b>Storage instructions</b>	Shipped at 4°C. Upon delivery aliquot and store at -20°C. Avoid freeze / thaw cycles.
<b>Storage buffer</b>	Preservative: 0.1% Sodium Azide Constituents: Ascites, 0.25M Sodium chloride, 0.02M PBS, pH 7.2
<b>Purity</b>	Ascites
<b>Clonality</b>	Monoclonal
<b>Clone number</b>	AE-2
<b>Isotype</b>	IgG1

Applications

Our [Abpromise guarantee](#) covers the use of **ab77959** in the following tested applications.

The application notes include recommended starting dilutions; optimal dilutions/concentrations should be determined by the end user.

Application	Abreviews	Notes
-------------	-----------	-------

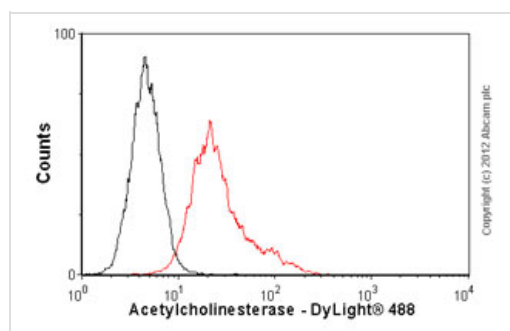
Flow Cyt	1/100.	<a href="#">ab170190</a> - Mouse monoclonal IgG1, is suitable for use as an isotype control with this antibody.
----------	--------	---

Application	Abreviews	Notes
WB		1/500 - 1/1000. Predicted molecular weight: 68 kDa.
IP		Use at an assay dependent concentration.
IHC-FoFr		1/200 - 1/1000. Does not react with fixed tissue; add antibody to perfused but unfixated tissue, then fix after primary incubation.

## Target

<b>Function</b>	Terminates signal transduction at the neuromuscular junction by rapid hydrolysis of the acetylcholine released into the synaptic cleft. Role in neuronal apoptosis.
<b>Tissue specificity</b>	Isoform H is highly expressed in erythrocytes.
<b>Sequence similarities</b>	Belongs to the type-B carboxylesterase/lipase family.
<b>Cellular localization</b>	Cell membrane; Cell junction > synapse. Secreted. Cell membrane and Nucleus. Only observed in apoptotic nuclei.

## Images



Flow Cytometry - Anti-Acetylcholinesterase antibody [AE-2] (ab77959)

Overlay histogram showing HeLa cells stained with ab77959 (red line). The cells were fixed with 80% methanol (5 min) and then permeabilized with 0.1% PBS-Tween for 20 min. The cells were then incubated in 1x PBS / 10% normal goat serum / 0.3M glycine to block non-specific protein-protein interactions followed by the antibody (ab77959, 1/100 dilution) for 30 min at 22°C. The secondary antibody used was DyLight® 488 goat anti-mouse IgG (H+L) (ab96879) at 1/500 dilution for 30 min at 22°C. Isotype control antibody (black line) was mouse IgG1 [ICIGG1] (ab91353, 2µg/1x10<sup>6</sup> cells) used under the same conditions. Acquisition of >5,000 events was performed.

**Please note:** All products are "FOR RESEARCH USE ONLY AND ARE NOT INTENDED FOR DIAGNOSTIC OR THERAPEUTIC USE"

## Our Promise to you: Quality guaranteed and expert technical support

- Replacement or refund for products not performing as stated on the datasheet

- Valid for 12 months from date of delivery
- Response to your inquiry within 24 hours
  
- We provide support in Chinese, English, French, German, Japanese and Spanish
- Extensive multi-media technical resources to help you
- We investigate all quality concerns to ensure our products perform to the highest standards

If the product does not perform as described on this datasheet, we will offer a refund or replacement. For full details of the Abpromise, please visit <https://www.abcam.com/abpromise> or contact our technical team.

## **Terms and conditions**

---

- Guarantee only valid for products bought direct from Abcam or one of our authorized distributors