

Product datasheet

Anti-Integrin alpha 1 + beta 1 antibody [RA1.1]
ab79007

2 Images

Overview

Product name	Anti-Integrin alpha 1 + beta 1 antibody [RA1.1]
Description	Mouse monoclonal [RA1.1] to Integrin alpha 1 + beta 1
Host species	Mouse
Specificity	Specifically binds Rat integrin alpha 1 + beta 1 (VLA-1 complex), will not recognize the individual integrin subunits. Does not inhibit VLA-1 mediated adhesion to matrix proteins.
Tested applications	Suitable for: IP, IHC-Fr, Flow Cyt Unsuitable for: WB
Species reactivity	Reacts with: Rat
Immunogen	Rat pheochromocytoma PC12 cells.
Positive control	Rat gut, heart and lung tissue.

Properties

Form	Liquid
Storage instructions	Shipped at 4°C. Upon delivery aliquot and store at -20°C or -80°C. Avoid repeated freeze / thaw cycles.
Storage buffer	Preservative: 0.1% Sodium Azide Constituents: 0.25M Sodium chloride, 0.02M PBS, pH 7.6
Purity	Protein A purified
Clonality	Monoclonal
Clone number	RA1.1
Myeloma	P3x63-Ag8.653
Isotype	IgG2a
Light chain type	kappa

Applications

Our [Abpromise guarantee](#) covers the use of **ab79007** in the following tested applications.

The application notes include recommended starting dilutions; optimal dilutions/concentrations should be determined by the end user.

Application	Abreviews	Notes
-------------	-----------	-------

IP		
IHC-Fr		
Flow Cyt		

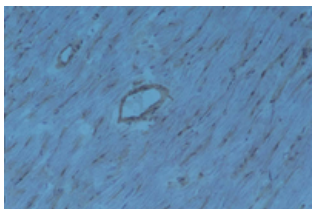
Application notes	Flow Cyt: Use at a concentration of 10 µg/ml. IHC-Fr: Use at a concentration of 20 µg/ml. Acetone fixation recommended. IP from detergent cell lysates: Use 2µg for 10 ⁶ cell equivalent. Is unsuitable for WB. Not yet tested in other applications. Optimal dilutions/concentrations should be determined by the end user.
--------------------------	--

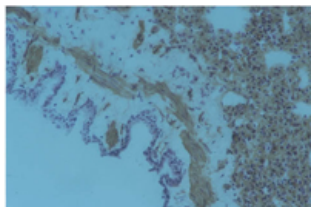
Target

Relevance	Integrins are heterodimeric proteins made up of alpha and beta subunits. At least 18 alpha and 8 beta subunits have been described in mammals. Integrin family members are membrane receptors involved in cell adhesion and recognition in a variety of processes including embryogenesis, hemostasis, tissue repair, immune response and metastatic diffusion of tumor cells. Integrin alpha 1 heterodimerizes with Integrin beta 1 to form a cell-surface receptor for collagen and laminin. It recognizes the proline-hydroxylated sequence G-F-P-G-E-R in collagen. The heterodimeric receptor is involved in cell-cell adhesion and may play a role in inflammation and fibrosis.
------------------	--

Cellular localization	Cell membrane; Single-pass type I membrane protein.
------------------------------	---

Images

	ab79007, at 20µg/ml, staining Integrin alpha 1 + beta 1 in rat heart tissue by immunohistochemistry using acetone fixed frozen tissue sections.
Immunohistochemistry (Frozen sections) - Anti-Integrin alpha 1 + beta 1 antibody [RA1.1] (ab79007)	



ab79007, at 20µg/ml, staining Integrin alpha 1 + beta 1 in rat lung tissue by immunohistochemistry using acetone fixed frozen tissue sections.

Immunohistochemistry (Frozen sections) - Anti-Integrin alpha 1 + beta 1 antibody [RA1.1] (ab79007)

Please note: All products are "FOR RESEARCH USE ONLY AND ARE NOT INTENDED FOR DIAGNOSTIC OR THERAPEUTIC USE"

Our Abpromise to you: Quality guaranteed and expert technical support

- Replacement or refund for products not performing as stated on the datasheet
- Valid for 12 months from date of delivery
- Response to your inquiry within 24 hours
- We provide support in Chinese, English, French, German, Japanese and Spanish
- Extensive multi-media technical resources to help you
- We investigate all quality concerns to ensure our products perform to the highest standards

If the product does not perform as described on this datasheet, we will offer a refund or replacement. For full details of the Abpromise, please visit <https://www.abcam.com/abpromise> or contact our technical team.

Terms and conditions

- Guarantee only valid for products bought direct from Abcam or one of our authorized distributors