


Product datasheet

Anti-FER antibody ab79358

1 Image

Overview

<b>Product name</b>	Anti-FER antibody
<b>Description</b>	Rabbit polyclonal to FER
<b>Host species</b>	Rabbit
<b>Specificity</b>	Detects endogenous levels of total FER protein.
<b>Tested applications</b>	<b>Suitable for:</b> WB, ELISA
<b>Species reactivity</b>	<b>Reacts with:</b> Human <b>Predicted to work with:</b> Mouse 
<b>Immunogen</b>	Synthesized non phosphopeptide derived from human FER around the phosphorylation site of tyrosine 402 (V-N-Y <sup>P</sup> -E-E).
<b>Positive control</b>	Extracts from HeLa cells, treated with paclitaxel (1 μM, 24 hours).

Properties

<b>Form</b>	Liquid
<b>Storage instructions</b>	Shipped at 4°C. Store at -20°C. Stable for 12 months at -20°C.
<b>Storage buffer</b>	Preservative: 0.02% Sodium Azide Constituents: 50% Glycerol, PBS (without Mg <sup>2+</sup> and Ca <sup>2+</sup> ), 150mM Sodium chloride, pH 7.4
<b>Purity</b>	Immunogen affinity purified
<b>Purification notes</b>	Affinity purified from rabbit antiserum by affinity chromatography using epitope specific immunogen.
<b>Clonality</b>	Polyclonal
<b>Isotype</b>	IgG

Applications

Our [Abpromise guarantee](#) covers the use of **ab79358** in the following tested applications.

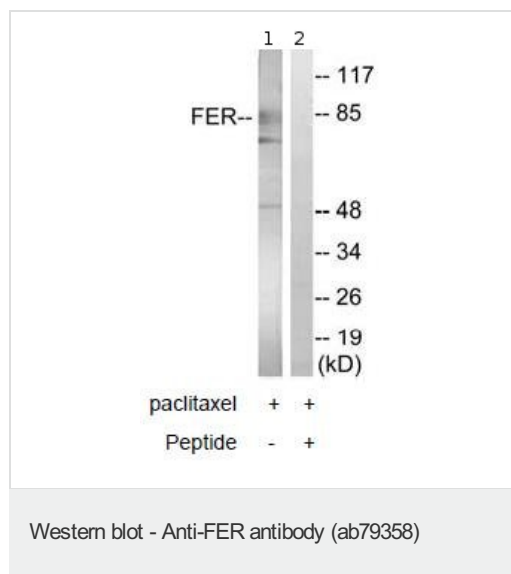
The application notes include recommended starting dilutions; optimal dilutions/concentrations should be determined by the end user.

Application	Abreviews	Notes
WB		1/500 - 1/1000. Predicted molecular weight: 93 kDa.
ELISA		1/40000.

## Target

<b>Function</b>	Tyrosine kinase of the non-receptor type. Probably performs an important function, perhaps in regulatory processes such as cell cycle control.
<b>Tissue specificity</b>	Expressed in a variety of lymphoid cell lines.
<b>Sequence similarities</b>	Belongs to the protein kinase superfamily. Tyr protein kinase family. Fes/fps subfamily. Contains 1 FCH domain. Contains 1 protein kinase domain. Contains 1 SH2 domain.
<b>Cellular localization</b>	Cytoplasm. Nucleus. Associated with the chromatin.

## Images



**All lanes** : Anti-FER antibody (ab79358) at 1/500 dilution

**Lane 1** : extracts from HeLa cells, treated with paclitaxel (1  $\mu$ M, 24 hours)

**Lane 2** : extracts from HeLa cells, treated with paclitaxel (1  $\mu$ M, 24 hours) with immunizing peptide at 10  $\mu$ g

Lysates/proteins at 10  $\mu$ g per lane.

**Predicted band size:** 93 kDa

**Observed band size:** 85 kDa

[why is the actual band size different from the predicted?](#)

**Additional bands at:** 50 kDa, 70 kDa. We are unsure as to the identity of these extra bands.

**Please note:** All products are "FOR RESEARCH USE ONLY AND ARE NOT INTENDED FOR DIAGNOSTIC OR THERAPEUTIC USE"

## Our Abpromise to you: Quality guaranteed and expert technical support

- Replacement or refund for products not performing as stated on the datasheet
- Valid for 12 months from date of delivery
- Response to your inquiry within 24 hours
- We provide support in Chinese, English, French, German, Japanese and Spanish

- Extensive multi-media technical resources to help you
- We investigate all quality concerns to ensure our products perform to the highest standards

If the product does not perform as described on this datasheet, we will offer a refund or replacement. For full details of the Abpromise, please visit <https://www.abcam.com/abpromise> or contact our technical team.

### **Terms and conditions**

---

- Guarantee only valid for products bought direct from Abcam or one of our authorized distributors