

Product datasheet

Recombinant human hPDE4D2 protein ab80335

1 Image

Overview

---

**Product name** Recombinant human hPDE4D2 protein  
**Protein length** Full length protein

Description

---

**Nature** Recombinant  
**Source** Baculovirus infected Sf9 cells  
**Amino Acid Sequence**  
**Species** Human

Specifications

---

Our [Abpromise guarantee](#) covers the use of **ab80335** in the following tested applications.

The application notes include recommended starting dilutions; optimal dilutions/concentrations should be determined by the end user.

**Biological activity** Specific Activity: 36365 pmol/min/μg.  
**Applications** SDS-PAGE  
 Functional Studies  
**Form** Liquid

Preparation and Storage

---

**Stability and Storage** Shipped on Dry Ice. Upon delivery aliquot. Store at -80°C. Avoid freeze / thaw cycle.  
 Preservative: None  
 Constituents: 50% Glycerol, 0.05% Tween 20, 3mM DTT, 25mM Tris HCl, 100mM Sodium chloride, pH 8.0  
 This product is an active protein and may elicit a biological response in vivo, handle with caution.

General Info

---

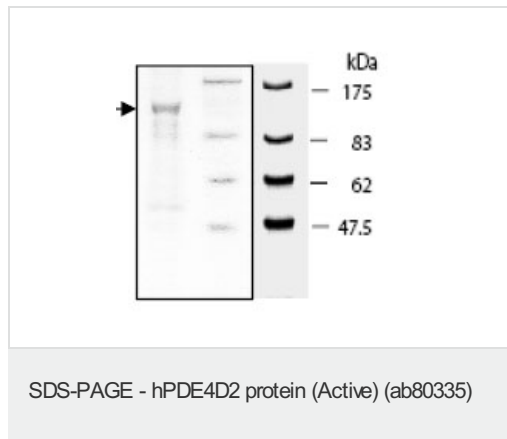
**Relevance** Cyclic AMP-dependent phosphodiesterase type D (PDE4D) family is comprised of 5 variants

(PDE4D1, D2, D3, D4 and D5). One or more PDE4D subtype variants are ubiquitously present in all mammalian cells. In CNS all five PDE4D subtype variants are expressed in varying ratios and their activity is regulated in tandem with GPCRs stimulation. Peripheral tissues also exhibit differential expression of PDE4D variants. PDE4D1/D2 mRNA levels rise in response to an increase in cAMP. Short term regulation of PDE4D variants involved PKA, MAP kinases and Erk2 phosphorylation that results in rapid change in their enzymatic activities. Other regulatory mechanism involved protein protein interactions with cytoskeletal scaffolding proteins.

### Cellular localization

Cytoplasm. Membrane. Cytoplasm; cytoskeleton. Centrosome. Note= Found in the soluble fraction, associated with membranes, and associated with the cytoskeleton and the centrosome

### Images



10% SDS-PAGE showing ab80335 at approximately 103kDa (4 $\mu$ g).

**Please note:** All products are "FOR RESEARCH USE ONLY AND ARE NOT INTENDED FOR DIAGNOSTIC OR THERAPEUTIC USE"

### Our Abpromise to you: Quality guaranteed and expert technical support

- Replacement or refund for products not performing as stated on the datasheet
- Valid for 12 months from date of delivery
- Response to your inquiry within 24 hours
- We provide support in Chinese, English, French, German, Japanese and Spanish
- Extensive multi-media technical resources to help you
- We investigate all quality concerns to ensure our products perform to the highest standards

If the product does not perform as described on this datasheet, we will offer a refund or replacement. For full details of the Abpromise, please visit <https://www.abcam.com/abpromise> or contact our technical team.

### Terms and conditions

- Guarantee only valid for products bought direct from Abcam or one of our authorized distributors