

## Product datasheet

# Anti-APOL3 antibody ab80490

1 Image

### Overview

<b>Product name</b>	Anti-APOL3 antibody
<b>Description</b>	Goat polyclonal to APOL3
<b>Host species</b>	Goat
<b>Specificity</b>	ab80490 is expected to recognize isoform 1 (NP_663615.1), isoform 2 (NP_055164.1, NP_085147.1, NP_663614.1) and isoform 3 (NP_663616.1, NP_663617.1).
<b>Tested applications</b>	<b>Suitable for:</b> ELISA, WB
<b>Species reactivity</b>	<b>Reacts with:</b> Human
<b>Immunogen</b>	Synthetic peptide: ELTQIQRLNPCHTH from the C-terminal of Human APOL3 protein sequence according to NP_663615.1, NP_055164.1, NP_663616.1.  <a href="#">Run BLAST with</a> <a href="#">Run BLAST with</a>
<b>Positive control</b>	Daudi lysate. MOLT4 lysate.

### Properties

<b>Form</b>	Liquid
<b>Storage instructions</b>	Shipped at 4°C. Upon delivery aliquot and store at -20°C. Avoid freeze / thaw cycles.
<b>Storage buffer</b>	Preservative: 0.02% Sodium Azide Constituents: 0.5% BSA, Tris saline, pH 7.3
<b>Purity</b>	Immunogen affinity purified
<b>Purification notes</b>	ab80490 is purified from goat serum by ammonium sulphate precipitation followed by antigen affinity chromatography using the immunizing peptide.
<b>Clonality</b>	Polyclonal
<b>Isotype</b>	IgG

### Applications

Our [Abpromise guarantee](#) covers the use of **ab80490** in the following tested applications.

The application notes include recommended starting dilutions; optimal dilutions/concentrations should be determined by the end user.

Application	Abreviews	Notes
-------------	-----------	-------

ELISA

WB

### Application notes

Peptide ELISA: antibody detection limit dilution 1/1000.

WB: Use at a concentration of 1 - 3 µg/ml. Detects a band of approximately 40 kDa (predicted molecular weight: 44 kDa).

Not yet tested in other applications.

Optimal dilutions/concentrations should be determined by the end user.

### Target

#### Function

May affect the movement of lipids in the cytoplasm or allow the binding of lipids to organelles.

#### Tissue specificity

Widely expressed; the highest levels are in prostate, lung and placenta; also detected in kidney, bone marrow, spleen, thymus, spinal cord, adrenal gland, salivary gland, trachea and mammary gland; levels are low in brain, heart, fetal liver, pancreas and testis.

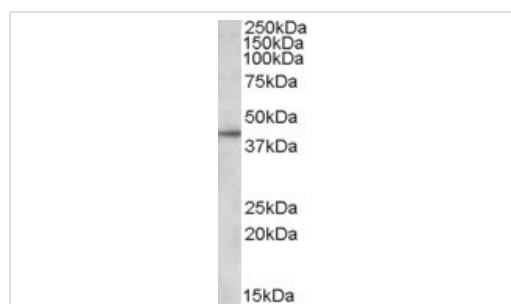
#### Sequence similarities

Belongs to the apolipoprotein L family.

#### Cellular localization

Cytoplasm.

### Images



Western blot - Anti-APOL3 antibody (ab80490)

Anti-APOL3 antibody (ab80490) at 1 µg/ml +

Daudi lysate (in RIPA buffer) at 35 µg

**Predicted band size:** 44 kDa

**Observed band size:** 40 kDa

Primary incubation was 1 hour.

**Please note:** All products are "FOR RESEARCH USE ONLY AND ARE NOT INTENDED FOR DIAGNOSTIC OR THERAPEUTIC USE"

### Our Abpromise to you: Quality guaranteed and expert technical support

- Replacement or refund for products not performing as stated on the datasheet
- Valid for 12 months from date of delivery
- Response to your inquiry within 24 hours
- We provide support in Chinese, English, French, German, Japanese and Spanish
- Extensive multi-media technical resources to help you

- We investigate all quality concerns to ensure our products perform to the highest standards

If the product does not perform as described on this datasheet, we will offer a refund or replacement. For full details of the Abpromise, please visit <https://www.abcam.com/abpromise> or contact our technical team.

### **Terms and conditions**

---

- Guarantee only valid for products bought direct from Abcam or one of our authorized distributors