


## Product datasheet

# Anti-Glycerol 3 Phosphate Dehydrogenase antibody ab80535

1 Image

### Overview

<b>Product name</b>	Anti-Glycerol 3 Phosphate Dehydrogenase antibody
<b>Description</b>	Rabbit polyclonal to Glycerol 3 Phosphate Dehydrogenase
<b>Host species</b>	Rabbit
<b>Tested applications</b>	<b>Suitable for:</b> WB, ELISA
<b>Species reactivity</b>	<b>Reacts with:</b> Human <b>Predicted to work with:</b> Mouse, Rat, Rabbit, Horse, Chicken, Guinea pig, Cow, Cat, Dog, Pig, Zebrafish 
<b>Immunogen</b>	Synthetic peptide corresponding to a region between N terminal residues 107 and 156 (HLKANATGISLIKGVDEGPNGLKLISEVIGERLGLIPMSVLMGANIASEV A) of Human Glycerol 3 Phosphate Dehydrogenase (NP_005267).
<b>Positive control</b>	Fetal lung lysate.

### Properties

<b>Form</b>	Liquid
<b>Storage instructions</b>	Shipped at 4°C. Upon delivery aliquot and store at -20°C or -80°C. Avoid repeated freeze / thaw cycles.
<b>Storage buffer</b>	Preservative: None Constituents: 2% Sucrose, PBS
<b>Purity</b>	Immunogen affinity purified
<b>Clonality</b>	Polyclonal
<b>Isotype</b>	IgG

### Applications

Our [Abpromise guarantee](#) covers the use of **ab80535** in the following tested applications.

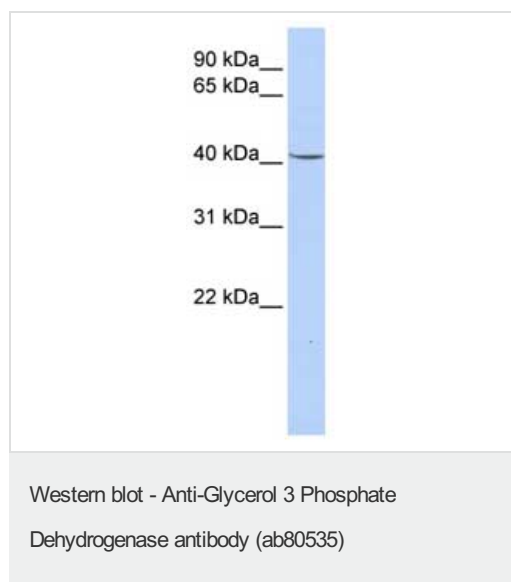
The application notes include recommended starting dilutions; optimal dilutions/concentrations should be determined by the end user.

Application	Abreviews	Notes
WB		Use a concentration of 1 µg/ml. Predicted molecular weight: 37 kDa. Good results were obtained when blocked with 5% non-fat dry milk in 0.05% PBS-T.
ELISA		Use at an assay dependent concentration. Titre using peptide based assay: 1/312500.

## Target

<b>Sequence similarities</b>	Belongs to the NAD-dependent glycerol-3-phosphate dehydrogenase family.
<b>Cellular localization</b>	Cytoplasm.

## Images



Anti-Glycerol 3 Phosphate Dehydrogenase antibody (ab80535) at 1 µg/ml (in 5% skim milk / PBS buffer) + Fetal lung lysate at 10 µg

### Secondary

HRP conjugated anti-Rabbit IgG at 1/50000 dilution

**Predicted band size:** 37 kDa

**Observed band size:** 42 kDa

Gel concentration: 12%

**Please note:** All products are "FOR RESEARCH USE ONLY AND ARE NOT INTENDED FOR DIAGNOSTIC OR THERAPEUTIC USE"

## Our Abpromise to you: Quality guaranteed and expert technical support

- Replacement or refund for products not performing as stated on the datasheet
- Valid for 12 months from date of delivery
- Response to your inquiry within 24 hours
- We provide support in Chinese, English, French, German, Japanese and Spanish
- Extensive multi-media technical resources to help you
- We investigate all quality concerns to ensure our products perform to the highest standards

If the product does not perform as described on this datasheet, we will offer a refund or replacement. For full details of the Abpromise, please visit <https://www.abcam.com/abpromise> or contact our technical team.

## Terms and conditions

---

- Guarantee only valid for products bought direct from Abcam or one of our authorized distributors