

Product datasheet

Anti-RHOD antibody ab80537

1 Image

Overview

<b>Product name</b>	Anti-RHOD antibody
<b>Description</b>	Rabbit polyclonal to RHOD
<b>Host species</b>	Rabbit
<b>Tested applications</b>	<b>Suitable for:</b> WB, ELISA
<b>Species reactivity</b>	<b>Reacts with:</b> Human
<b>Immunogen</b>	Synthetic peptide corresponding to a region between N terminal residues 2 and 51 (TAAQAAGEEAPPGVRSVKVVLVGDGGCGKTSLLMVFADGAFPESTPTV F) of human RHOD (NP_055393).
<b>Positive control</b>	RHOD transfected 293T cell lysate.

Properties

<b>Form</b>	Liquid
<b>Storage instructions</b>	Shipped at 4°C. Upon delivery aliquot and store at -20°C. Avoid repeated freeze / thaw cycles.
<b>Storage buffer</b>	Preservative: None Constituents: 2% Sucrose, PBS
<b>Purity</b>	Immunogen affinity purified
<b>Clonality</b>	Polyclonal
<b>Isotype</b>	IgG

Applications

Our [Abpromise guarantee](#) covers the use of **ab80537** in the following tested applications.

The application notes include recommended starting dilutions; optimal dilutions/concentrations should be determined by the end user.

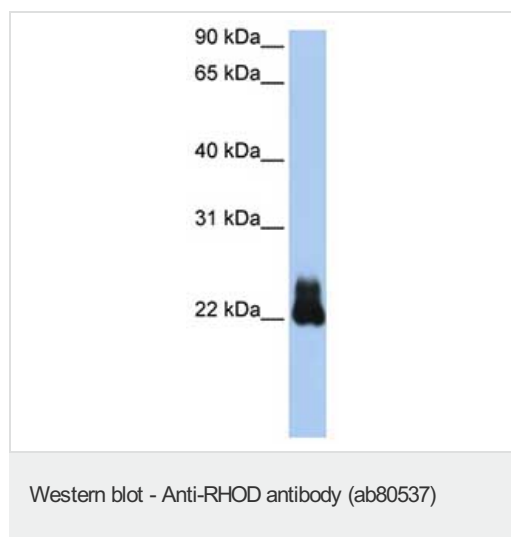
Application	Abreviews	Notes
WB		Use a concentration of 1 µg/ml. Predicted molecular weight: 23 kDa. Good results were obtained when blocked with 5% non-fat dry milk in 0.05% PBS-T.

Application	Abreviews	Notes
ELISA		Use at an assay dependent concentration. Titre using peptide based assay: 1/312500.

## Target

<b>Function</b>	Involved in endosome dynamics. May coordinate membrane transport with the function of the cytoskeleton. Participates in reorganization of actin cytoskeleton.
<b>Tissue specificity</b>	Heart, placenta, liver, skeletal muscle, and pancreas and, with weaker intensity, in several other tissues.
<b>Sequence similarities</b>	Belongs to the small GTPase superfamily. Rho family.
<b>Cellular localization</b>	Cell membrane.

## Images



Anti-RHOD antibody (ab80537) at 1 µg/ml (in 5% skim milk / PBS buffer) + RHOD transfected 293T cell lysate at 10 µg

### Secondary

HRP conjugated anti-Rabbit IgG at 1/50000 dilution

**Predicted band size:** 23 kDa

**Observed band size:** 23 kDa

Gel concentration: 12%

**Please note:** All products are "FOR RESEARCH USE ONLY AND ARE NOT INTENDED FOR DIAGNOSTIC OR THERAPEUTIC USE"

## Our Abpromise to you: Quality guaranteed and expert technical support

- Replacement or refund for products not performing as stated on the datasheet
- Valid for 12 months from date of delivery
- Response to your inquiry within 24 hours
- We provide support in Chinese, English, French, German, Japanese and Spanish
- Extensive multi-media technical resources to help you
- We investigate all quality concerns to ensure our products perform to the highest standards

If the product does not perform as described on this datasheet, we will offer a refund or replacement. For full details of the Abpromise, please visit <https://www.abcam.com/abpromise> or contact our technical team.

## Terms and conditions

---

- Guarantee only valid for products bought direct from Abcam or one of our authorized distributors