


Product datasheet

Anti-Cytokeratin 8 antibody [24] ab80661

1 Image

Overview

<b>Product name</b>	Anti-Cytokeratin 8 antibody [24]
<b>Description</b>	Mouse monoclonal [24] to Cytokeratin 8
<b>Host species</b>	Mouse
<b>Tested applications</b>	<b>Suitable for:</b> WB, ELISA, IHC-P
<b>Species reactivity</b>	<b>Reacts with:</b> Recombinant fragment <b>Predicted to work with:</b> Human 
<b>Immunogen</b>	Escherichia coli expressed recombinant protein corresponding to full length Human Cytokeratin 8.
<b>Positive control</b>	Recombinant Cytokeratin 8.

Properties

<b>Form</b>	Liquid
<b>Storage instructions</b>	Shipped at 4°C. Upon delivery aliquot and store at -20°C. Avoid repeated freeze / thaw cycles.
<b>Storage buffer</b>	Preservative: 0.02% Proclin Constituents: Tris HCl, Glycine, pH 7.0
<b>Purity</b>	Protein A purified
<b>Clonality</b>	Monoclonal
<b>Clone number</b>	24
<b>Isotype</b>	IgG2a

Applications

Our [Abpromise guarantee](#) covers the use of **ab80661** in the following tested applications.

The application notes include recommended starting dilutions; optimal dilutions/concentrations should be determined by the end user.

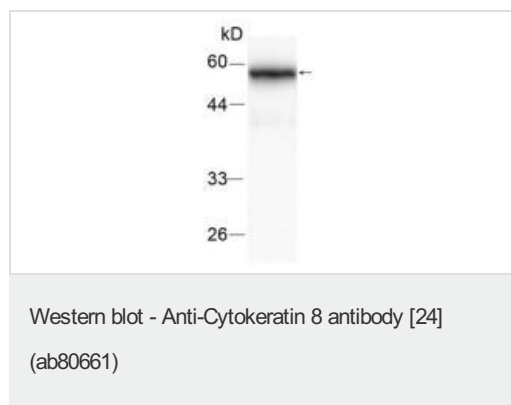
Application	Abreviews	Notes
WB		1/1000. Detects a band of approximately 54 kDa (predicted molecular weight: 54 kDa).

Application	Abreviews	Notes
ELISA		Use at an assay dependent concentration.
IHC-P		Use at an assay dependent concentration.

## Target

<b>Function</b>	Together with KRT19, helps to link the contractile apparatus to dystrophin at the costameres of striated muscle.
<b>Tissue specificity</b>	Observed in muscle fibers accumulating in the costameres of myoplasm at the sarcolemma membrane in structures that contain dystrophin and spectrin. Expressed in gingival mucosa and hard palate of the oral cavity.
<b>Involvement in disease</b>	Cirrhosis
<b>Sequence similarities</b>	Belongs to the intermediate filament family.
<b>Post-translational modifications</b>	Phosphorylation on serine residues is enhanced during EGF stimulation and mitosis. Ser-74 phosphorylation plays an important role in keratin filament reorganization. O-glycosylated. O-GlcNAcylation at multiple sites increases solubility, and decreases stability by inducing proteasomal degradation. O-glycosylated (O-GlcNAcyated), in a cell cycle-dependent manner.
<b>Cellular localization</b>	Cytoplasm. Nucleus, nucleoplasm. Nucleus matrix.

## Images



Anti-Cytokeratin 8 antibody [24] (ab80661) at 1/1000 dilution + Recombinant Cytokeratin 8 protein

**Predicted band size:** 54 kDa

**Observed band size:** 54 kDa

**Please note:** All products are "FOR RESEARCH USE ONLY AND ARE NOT INTENDED FOR DIAGNOSTIC OR THERAPEUTIC USE"

## Our Abpromise to you: Quality guaranteed and expert technical support

- Replacement or refund for products not performing as stated on the datasheet
- Valid for 12 months from date of delivery
- Response to your inquiry within 24 hours
- We provide support in Chinese, English, French, German, Japanese and Spanish

- Extensive multi-media technical resources to help you
- We investigate all quality concerns to ensure our products perform to the highest standards

If the product does not perform as described on this datasheet, we will offer a refund or replacement. For full details of the Abpromise, please visit <https://www.abcam.com/abpromise> or contact our technical team.

### **Terms and conditions**

---

- Guarantee only valid for products bought direct from Abcam or one of our authorized distributors