

Product datasheet

Anti-Shigella dysenteriae antibody [6] ab80912

1 Image

Overview

Product name	Anti-Shigella dysenteriae antibody [6]
Description	Mouse monoclonal [6] to Shigella dysenteriae
Host species	Mouse
Specificity	Recognizes recombinant Shigella dysenteriae IpaA protein
Tested applications	Suitable for: WB, ELISA
Species reactivity	Reacts with: Recombinant fragment
Immunogen	E.coli expressed recombinant protein corresponding to fragment (aa 373-581) of Shigella dysenteriae IpaA (Q326T2)
Positive control	Shigella dysenteriae IpaA protein

Properties

Form	Liquid
Storage instructions	Shipped at 4°C. Upon delivery aliquot and store at -20°C or -80°C. Avoid repeated freeze / thaw cycles.
Storage buffer	Preservative: 0.02% Proclin 300 Constituents: Tris glycine, pH 7.0
Purity	Protein G purified
Clonality	Monoclonal
Clone number	6
Isotype	IgG1

Applications

Our [Abpromise guarantee](#) covers the use of **ab80912** in the following tested applications.

The application notes include recommended starting dilutions; optimal dilutions/concentrations should be determined by the end user.

Application	Abreviews	Notes
WB		

Application	Abreviews	Notes
-------------	-----------	-------

ELISA

Application notes

ELISA: Use at an assay dependent dilution.
 WB: 1/1000. Predicted molecular weight: 70 kDa.

This antibody has only been tested against the recombinant fragment. It has not been tested against the endogenous protein.

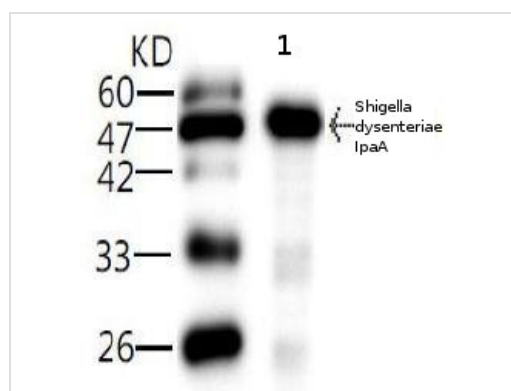
Not yet tested in other applications.
 Optimal dilutions/concentrations should be determined by the end user.

Target

Relevance

Shigella dysenteriae is a facultative anaerobic, Gram-negative rod from the family Enterobacteriaceae. S. dysenteriae is primarily a human pathogen, as are all Shigellae. The disease has infected masses, particularly in close living quarters, such as refugee camps. S. dysenteriae type 1 (Sd1) is the only cause of epidemic dysentery. The Shiga bacillus is the most virulent of the four serogroups of Shigella.

Images



Anti-Shigella dysenteriae antibody [6]
 (ab80912) at 1/1000 dilution + Shigella
 dysenteriae
 IpaA antigen

Predicted band size: 70 kDa

Western blot - Anti-Shigella dysenteriae antibody [6]
 (ab80912)

Please note: All products are "FOR RESEARCH USE ONLY AND ARE NOT INTENDED FOR DIAGNOSTIC OR THERAPEUTIC USE"

Our Abpromise to you: Quality guaranteed and expert technical support

- Replacement or refund for products not performing as stated on the datasheet
- Valid for 12 months from date of delivery
- Response to your inquiry within 24 hours
- We provide support in Chinese, English, French, German, Japanese and Spanish

- Extensive multi-media technical resources to help you
- We investigate all quality concerns to ensure our products perform to the highest standards

If the product does not perform as described on this datasheet, we will offer a refund or replacement. For full details of the Abpromise, please visit <https://www.abcam.com/abpromise> or contact our technical team.

Terms and conditions

- Guarantee only valid for products bought direct from Abcam or one of our authorized distributors