

## Product datasheet

# Anti-Listeria monocytogenes hly antibody [3] ab81141

1 Image

### Overview

<b>Product name</b>	Anti-Listeria monocytogenes hly antibody [3]
<b>Description</b>	Mouse monoclonal [3] to Listeria monocytogenes hly
<b>Host species</b>	Mouse
<b>Tested applications</b>	<b>Suitable for:</b> ELISA, WB
<b>Species reactivity</b>	Reacts with Recombinant Fragment. Predicted to react with Listeria monocytogenes.
<b>Immunogen</b>	Recombinant fragment: QTEAKDASAF NKENSISMA PPASPPASPK TPIEKKHADE IDKYIQGLD YNKNNVLVYH GDAVTNVPPR KGYKDGNEYI VVEKKKKSIN QNNADIQVVN, corresponding to amino acids 20-119 of Listeria monocytogenes hly, expressed in E.coli. <a href="#">Run BLAST with ExPASy</a> <a href="#">Run BLAST with NCBI</a>
<b>Positive control</b>	Recombinant Listeria monocytogenes hly antigen.

### Properties

<b>Form</b>	Liquid
<b>Storage instructions</b>	Shipped at 4°C. Upon delivery aliquot and store at -20°C. Avoid repeated freeze / thaw cycles.
<b>Storage buffer</b>	Preservative: 0.02% Proclin Constituents: Tris HCl, Sodium citrate, pH 7.0
<b>Purity</b>	Protein A purified
<b>Clonality</b>	Monoclonal
<b>Clone number</b>	3
<b>Isotype</b>	IgG1

### Applications

Our [Abpromise guarantee](#) covers the use of **ab81141** in the following tested applications.

The application notes include recommended starting dilutions; optimal dilutions/concentrations should be determined by the end user.

Application	Abreviews	Notes
ELISA		

Application	Abreviews	Notes
-------------	-----------	-------

WB

### Application notes

ELISA: Use at an assay dependent dilution.  
 WB: 1/1000. Predicted molecular weight: 59 kDa.

This antibody has only been tested in WB against the recombinant fragment used as immunogen. We have no data on the detection of endogenous protein.

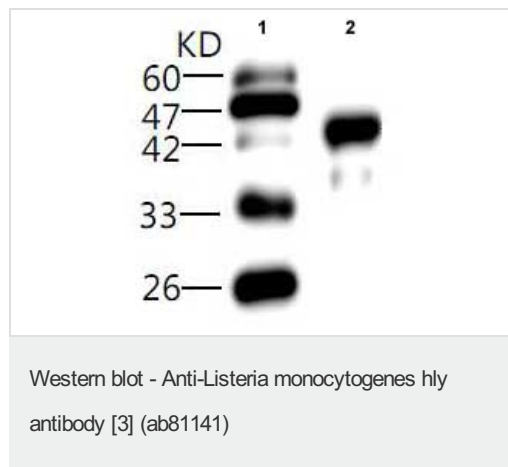
Not yet tested in other applications.  
 Optimal dilutions/concentrations should be determined by the end user.

### Target

#### Relevance

Listeria monocytogenes is a Gram-positive bacterium, in the division Firmicutes and is the causative agent of Listeriosis. Listeria monocytogenes hly is a sulfhydryl-activated toxin and is able to lyse cholesterol containing membranes. It can be reversibly inactivated by oxidation. Cholesterol is the receptor for the binding of these toxins to eukaryotic cell membranes.

### Images



**All lanes :** Anti-Listeria monocytogenes hly antibody [3] (ab81141) at 1/1000 dilution

**Lane 1 :** Molecular weight marker

**Lane 2 :** Recombinant Listeria monocytogenes hly antigen

**Predicted band size:** 59 kDa

**Observed band size:** 45 kDa

**Please note:** All products are "FOR RESEARCH USE ONLY AND ARE NOT INTENDED FOR DIAGNOSTIC OR THERAPEUTIC USE"

### Our Abpromise to you: Quality guaranteed and expert technical support

- Replacement or refund for products not performing as stated on the datasheet
- Valid for 12 months from date of delivery
- Response to your inquiry within 24 hours
- We provide support in Chinese, English, French, German, Japanese and Spanish
- Extensive multi-media technical resources to help you
- We investigate all quality concerns to ensure our products perform to the highest standards

If the product does not perform as described on this datasheet, we will offer a refund or replacement. For full details of the Abpromise, please visit <https://www.abcam.com/abpromise> or contact our technical team.

## Terms and conditions

---

- Guarantee only valid for products bought direct from Abcam or one of our authorized distributors