


Product datasheet

Anti-TRIM31 antibody ab82680

1 Image

Overview

|                            |  |
|----------------------------|--|
| <b>Product name</b>        | Anti-TRIM31 antibody   |
| <b>Description</b>         | Rabbit polyclonal to TRIM31  |
| <b>Host species</b>        | Rabbit   |
| <b>Tested applications</b> | <b>Suitable for:</b> WB, ELISA   |
| <b>Species reactivity</b>  | <b>Reacts with:</b> Human<br><b>Predicted to work with:</b> Rabbit, Chimpanzee                  |
| <b>Immunogen</b>           | Synthetic peptide corresponding to a region within the internal sequence amino acids 287-336 (GSLKKFKDQL QADRKKDENR FFKSMNKNDM KSWGLLQKNN HKMNKTSEPG) of Human TRIM31 (NP_008959). |
| <b>Positive control</b>    | Fetal lung lysate  |

Properties

|                             |   |
|-----------------------------|---|
| <b>Form</b>                 | Liquid  |
| <b>Storage instructions</b> | Shipped at 4°C. Upon delivery aliquot and store at -20°C or -80°C. Avoid repeated freeze / thaw cycles. |
| <b>Storage buffer</b>       | Preservative: None<br>Constituents: 2% Sucrose, PBS   |
| <b>Purity</b>               | Immunogen affinity purified   |
| <b>Clonality</b>            | Polyclonal  |
| <b>Isotype</b>              | IgG   |

Applications

Our [Abpromise guarantee](#) covers the use of **ab82680** in the following tested applications.

The application notes include recommended starting dilutions; optimal dilutions/concentrations should be determined by the end user.

| Application | Abreviews | Notes   |
|-------------|-----------|---|
| WB          |           | Use a concentration of 1 µg/ml. Detects a band of approximately 31, 55 kDa (predicted molecular weight: 48 kDa). Good results were obtained when blocked with 5% non-fat dry milk in 0.05% PBS-T. |

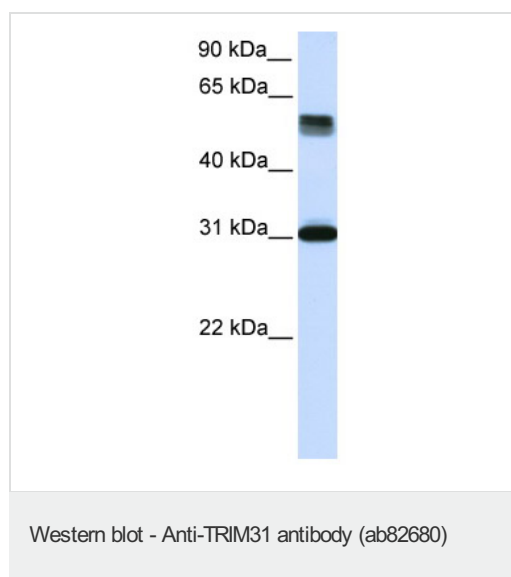
| Application | Abreviews | Notes  |
|-------------|-----------|--|
| ELISA       |           | Use at an assay dependent concentration.<br>ELISA titre using peptide based assay 1/62500. |

## Target

**Relevance** The TRIM motif includes three zinc binding domains, a RING, a B box type 1 and a B box type 2, and a coiled-coil region. The protein localizes to both the cytoplasm and the nucleus. Its function has not been identified.

**Cellular localization** Cytoplasm. Mitochondrion. Note: Predominantly expressed in the cytoplasm but a fraction is associated with the mitochondria.

## Images



Anti-TRIM31 antibody (ab82680) at 1 µg/ml + fetal lung lysate at 10 µg

### Secondary

HRP conjugated anti-Rabbit IgG at 1/50000 dilution

**Predicted band size:** 48 kDa

**Observed band size:** 31,55 kDa

Gel concentration 12%

**Please note:** All products are "FOR RESEARCH USE ONLY AND ARE NOT INTENDED FOR DIAGNOSTIC OR THERAPEUTIC USE"

## Our Abpromise to you: Quality guaranteed and expert technical support

- Replacement or refund for products not performing as stated on the datasheet
- Valid for 12 months from date of delivery
- Response to your inquiry within 24 hours
- We provide support in Chinese, English, French, German, Japanese and Spanish
- Extensive multi-media technical resources to help you
- We investigate all quality concerns to ensure our products perform to the highest standards

If the product does not perform as described on this datasheet, we will offer a refund or replacement. For full details of the Abpromise, please visit <https://www.abcam.com/abpromise> or contact our technical team.

## Terms and conditions

---

- Guarantee only valid for products bought direct from Abcam or one of our authorized distributors