


Product datasheet

Anti-MSI2 antibody ab83236

[1 References](#) [1 Image](#)

Overview

Product name	Anti-MSI2 antibody
Description	Rabbit polyclonal to MSI2
Host species	Rabbit
Tested applications	Suitable for: WB, ELISA
Species reactivity	Reacts with: Human Predicted to work with: Mouse, Rat, Rabbit, Cow, Cat, Dog, Pig, Drosophila melanogaster, Zebrafish 
Immunogen	Synthetic peptide corresponding to a region within the N terminal amino acids 2-51 (EANGSQGTSG SANDSQHDPG KMFIGGLSWQ TSPDSLRYDF SKFGEIRECM) of human MSI2 (NP_620412). Run BLAST with ExPASy Run BLAST with NCBI
Positive control	HepG2 cell lysate.

Properties

Form	Liquid
Storage instructions	Shipped at 4°C. Upon delivery aliquot and store at -20°C. Avoid freeze / thaw cycles.
Storage buffer	Preservative: None Constituents: 2% Sucrose, PBS
Purity	Immunogen affinity purified
Purification notes	Purified by peptide affinity chromatography method.
Clonality	Polyclonal
Isotype	IgG

Applications

Our [Abpromise guarantee](#) covers the use of **ab83236** in the following tested applications.

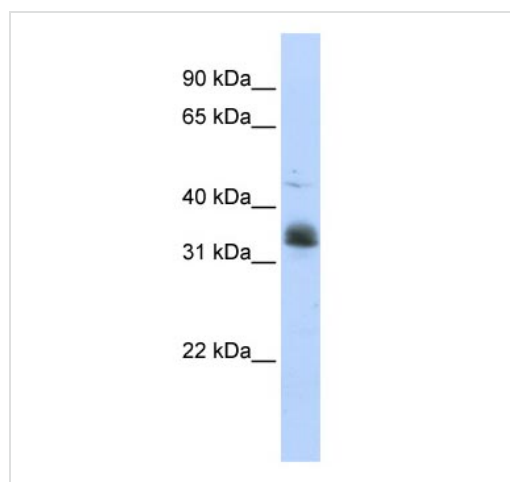
The application notes include recommended starting dilutions; optimal dilutions/concentrations should be determined by the end user.

Application	Abreviews	Notes
WB		Use a concentration of 1 µg/ml. Predicted molecular weight: 35 kDa. Good results were obtained when blocked with 5% non-fat dry milk in 0.05% PBS-T.
ELISA		Use at an assay dependent concentration. ELISA titre using peptide based assay, 1:1562500.

Target

Function	RNA binding protein that regulates the expression of target mRNAs at the translation level. May play a role in the proliferation and maintenance of stem cells in the central nervous system.
Tissue specificity	Ubiquitous; detected at low levels.
Involvement in disease	Note=Chromosomal aberrations involving MSI2 may contribute to disease progression in chronic myeloid leukemia. Translocation t(7;17)(p15;q23) with HOXA9; translocation t(7;17)(q32-34;q23).
Sequence similarities	Belongs to the Musashi family. Contains 2 RRM (RNA recognition motif) domains.
Post-translational modifications	Phosphorylated.
Cellular localization	Cytoplasm. Associated with polysomes.

Images



Western blot - Anti-MSI2 antibody (ab83236)

Anti-MSI2 antibody (ab83236) at 1 µg/ml +
HepG2 cell lysate at 10 µg

Secondary

HRP conjugated anti-Rabbit IgG at 1/50000
dilution

Predicted band size: 35 kDa

Observed band size: 35 kDa

Gel concentration 12%

Please note: All products are "FOR RESEARCH USE ONLY AND ARE NOT INTENDED FOR DIAGNOSTIC OR THERAPEUTIC USE"

Our Abpromise to you: Quality guaranteed and expert technical support

- Replacement or refund for products not performing as stated on the datasheet

- Valid for 12 months from date of delivery
- Response to your inquiry within 24 hours

- We provide support in Chinese, English, French, German, Japanese and Spanish
- Extensive multi-media technical resources to help you
- We investigate all quality concerns to ensure our products perform to the highest standards

If the product does not perform as described on this datasheet, we will offer a refund or replacement. For full details of the Abpromise, please visit <https://www.abcam.com/abpromise> or contact our technical team.

Terms and conditions

- Guarantee only valid for products bought direct from Abcam or one of our authorized distributors