


Product datasheet

Anti-RAI14 antibody ab83239

1 Image

Overview

Product name	Anti-RAI14 antibody
Description	Rabbit polyclonal to RAI14
Host species	Rabbit
Tested applications	Suitable for: WB, ELISA
Species reactivity	Reacts with: Human Predicted to work with: Mouse, Rat, Rabbit, Horse, Chicken, Guinea pig, Cow, Cat, Dog, Pig 
Immunogen	Synthetic peptide corresponding to a region within the internal sequence amino acids 647-696 (LSQLYKEAQA ELEDYRKRKS LEDVTAEYIH KAEHEKLMQL TNVSRKAED) of Human RAI14 (NP_056392).
Positive control	MCF7 cell lysate.

Properties

Form	Liquid
Storage instructions	Shipped at 4°C. Upon delivery aliquot and store at -20°C or -80°C. Avoid repeated freeze / thaw cycles.
Storage buffer	Preservative: None Constituents: 2% Sucrose, PBS
Purity	Immunogen affinity purified
Clonality	Polyclonal
Isotype	IgG

Applications

Our [Abpromise guarantee](#) covers the use of **ab83239** in the following tested applications.

The application notes include recommended starting dilutions; optimal dilutions/concentrations should be determined by the end user.

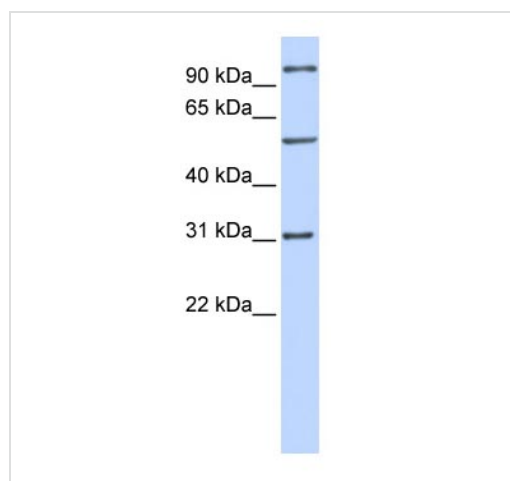
Application	Abreviews	Notes
-------------	-----------	-------

Application	Abreviews	Notes
WB		Use a concentration of 1 µg/ml. Detects a band of approximately 31, 55, 110 kDa (predicted molecular weight: 110 kDa). Good results were obtained when blocked with 5% non-fat dry milk in 0.05% PBS-T.
ELISA		Use at an assay dependent concentration. ELISA titre using peptide based assay 1/62500.

Target

Tissue specificity	Highly expressed in placenta, muscle, kidney and testis. Moderately expressed in heart, brain, lung, liver and intestine. Isoform 2 is widely expressed and expressed in fetal and adult testes, and spermatozoa.
Sequence similarities	Contains 7 ANK repeats.
Cellular localization	Cytoplasm > cell cortex. Cytoplasm > cytoskeleton. Associated with the cortical actin cytoskeleton structures in terminal web and cell-cell adhesion sites and stress fibers.

Images



Western blot - Anti-RAI14 antibody (ab83239)

Anti-RAI14 antibody (ab83239) at 1 µg/ml +
MCF7 cell lysate at 10 µg

Secondary

HRP conjugated anti-Rabbit IgG at 1/50000
dilution

Predicted band size: 110 kDa

Observed band size: 110,31,55 kDa

Gel concentration 12%

Please note: All products are "FOR RESEARCH USE ONLY AND ARE NOT INTENDED FOR DIAGNOSTIC OR THERAPEUTIC USE"

Our Abpromise to you: Quality guaranteed and expert technical support

- Replacement or refund for products not performing as stated on the datasheet
- Valid for 12 months from date of delivery
- Response to your inquiry within 24 hours
- We provide support in Chinese, English, French, German, Japanese and Spanish
- Extensive multi-media technical resources to help you
- We investigate all quality concerns to ensure our products perform to the highest standards

If the product does not perform as described on this datasheet, we will offer a refund or replacement. For full details of the Abpromise, please visit <https://www.abcam.com/abpromise> or contact our technical team.

Terms and conditions

- Guarantee only valid for products bought direct from Abcam or one of our authorized distributors