

## Product datasheet

# Anti-Pescadillo antibody ab84512

1 Image

### Overview

<b>Product name</b>	Anti-Pescadillo antibody
<b>Description</b>	Rabbit polyclonal to Pescadillo
<b>Host species</b>	Rabbit
<b>Tested applications</b>	<b>Suitable for:</b> IHC-P
<b>Species reactivity</b>	<b>Reacts with:</b> Human <b>Predicted to work with:</b> Chimpanzee, Rhesus monkey, Gorilla, Orangutan
<b>Immunogen</b>	Synthetic peptide corresponding to a region between residues 535 and the C-terminus (residue 588) of Human Pescadillo (NP_055118.1).
<b>Positive control</b>	Human breast adenocarcinoma tissue.

### Properties

<b>Form</b>	Liquid
<b>Storage instructions</b>	Shipped at 4°C. Upon delivery aliquot and store at -20°C. Avoid freeze / thaw cycles.
<b>Storage buffer</b>	Preservative: 0.09% Sodium azide Constituents: 0.1% BSA, Tris buffered saline
<b>Purity</b>	Immunogen affinity purified
<b>Clonality</b>	Polyclonal
<b>Isotype</b>	IgG

### Applications

Our [Abpromise guarantee](#) covers the use of **ab84512** in the following tested applications.

The application notes include recommended starting dilutions; optimal dilutions/concentrations should be determined by the end user.

Application	Abreviews	Notes
-------------	-----------	-------

IHC-P

<b>Application notes</b>	IHC-P: 1/100 - 1/500. Epitope exposure is recommended. Epitope exposure with citrate buffer will enhance staining.
--------------------------	--

Not yet tested in other applications.

Optimal dilutions/concentrations should be determined by the end user.

## Target

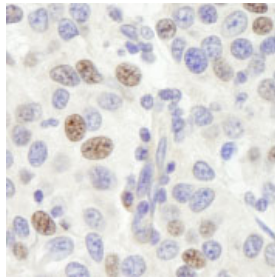
---

<b>Function</b>	Component of the PeBoW complex, which is required for maturation of 28S and 5.8S ribosomal RNAs and formation of the 60S ribosome.
<b>Tissue specificity</b>	Significant levels are detected in a variety of cancer cell lines, including glioblastoma, breast carcinoma, colon carcinoma and cervical carcinoma cells. Levels are abnormally elevated in malignant tumors of astrocytic origin.
<b>Sequence similarities</b>	Belongs to the pescadillo family. Contains 1 BRCT domain.
<b>Post-translational modifications</b>	Sumoylated.
<b>Cellular localization</b>	Nucleus > nucleolus. Nucleus > nucleoplasm. Chromosome. Appears to localize to the periphery of metaphase chromosomes during mitosis and to the prenucleolar bodies that form in mitotic cells prior to the actual nucleoli.

---

## Images

---



ab84512, at 1/250 dilution, staining Pescadillo in formalin-fixed, paraffin-embedded human breast adenocarcinoma by Immunohistochemistry, using DAB staining.

Immunohistochemistry (Formalin/PFA-fixed paraffin-embedded sections) - Anti-Pescadillo antibody (ab84512)

**Please note:** All products are "FOR RESEARCH USE ONLY AND ARE NOT INTENDED FOR DIAGNOSTIC OR THERAPEUTIC USE"

## Our Abpromise to you: Quality guaranteed and expert technical support

---

- Replacement or refund for products not performing as stated on the datasheet
- Valid for 12 months from date of delivery
- Response to your inquiry within 24 hours
- We provide support in Chinese, English, French, German, Japanese and Spanish
- Extensive multi-media technical resources to help you
- We investigate all quality concerns to ensure our products perform to the highest standards

If the product does not perform as described on this datasheet, we will offer a refund or replacement. For full details of the Abpromise, please visit <https://www.abcam.com/abpromise> or contact our technical team.

## Terms and conditions

---

- Guarantee only valid for products bought direct from Abcam or one of our authorized distributors