


Product datasheet

Anti-Grainyhead-like protein 1 homolog antibody ab85193

1 Image

Overview

Product name	Anti-Grainyhead-like protein 1 homolog antibody
Description	Rabbit polyclonal to Grainyhead-like protein 1 homolog
Host species	Rabbit
Tested applications	Suitable for: WB
Species reactivity	Reacts with: Human Predicted to work with: Mouse, Rat, Horse, Cow, Cat, Dog, Pig 
Immunogen	Synthetic peptide corresponding to a region within the N terminal amino acids 108-157 (GENRVQVLKN VPFNMLPHG NQLGIDKRGH LTAPDTTVTV SIATMPTHSI) of human Grainyhead-like protein 1 homolog (NP_937825). Run BLAST with ExPASy Run BLAST with NCBI
Positive control	Jurkat cell lysate

Properties

Form	Liquid
Storage instructions	Shipped at 4°C. Upon delivery aliquot and store at -20°C. Avoid repeated freeze / thaw cycles.
Storage buffer	Preservative: 0.09% Sodium azide Constituents: 2% Sucrose, PBS
Purity	Immunogen affinity purified
Purification notes	ab85193 is purified by peptide affinity chromatography method.
Clonality	Polyclonal
Isotype	IgG

Applications

Our [Abpromise guarantee](#) covers the use of **ab85193** in the following tested applications.

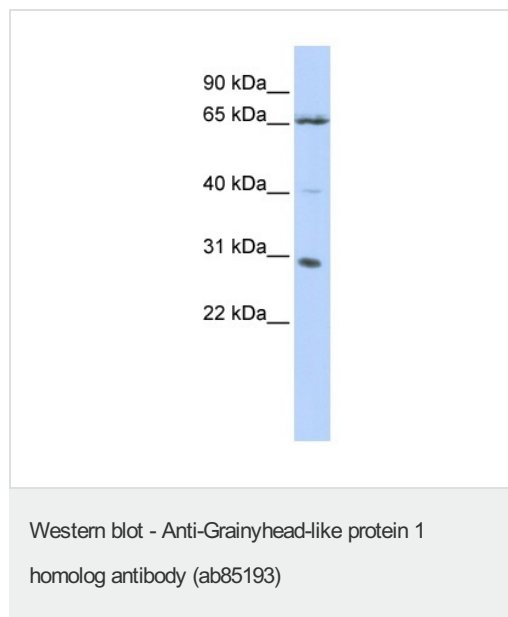
The application notes include recommended starting dilutions; optimal dilutions/concentrations should be determined by the end user.

Application	Abreviews	Notes
WB		Use a concentration of 1 µg/ml. Predicted molecular weight: 70 kDa. Good results were obtained when blocked with 5% non-fat dry milk in 0.05% PBS-T.

Target

Function	Transcription factor. Isoform 1 may function as an activator and isoform 2 as a repressor in tissues where both forms are expressed. May play a role in development. May be involved in epidermal differentiation (By similarity). Binds and transactivates the EN1 promoter.
Tissue specificity	Isoform 1 is highly expressed in brain, pancreas, tonsil, placenta and kidney. Isoform 2 is highly expressed in brain and liver. Highly expressed in placental JEG-3 cells and at very low levels in non-steroidogenic cells. No expression detected in adrenal NCI-H295A cells.
Sequence similarities	Belongs to the grh/CP2 family. Grainyhead subfamily.
Developmental stage	Expressed in fetal liver and brain.
Cellular localization	Nucleus.

Images



Anti-Grainyhead-like protein 1 homolog antibody (ab85193) at 1 µg/ml (in 5% skim milk / PBS buffer) + Jurkat cell lysate at 10 µg

Secondary

HRP conjugated anti-Rabbit IgG at 1/50000 dilution

Predicted band size: 70 kDa

Observed band size: 70 kDa

Additional bands at: 30 kDa (possible isoform), 40 kDa (possible isoform)

12% gel concentration

Please note: All products are "FOR RESEARCH USE ONLY AND ARE NOT INTENDED FOR DIAGNOSTIC OR THERAPEUTIC USE"

Our Abpromise to you: Quality guaranteed and expert technical support

- Replacement or refund for products not performing as stated on the datasheet
- Valid for 12 months from date of delivery
- Response to your inquiry within 24 hours
- We provide support in Chinese, English, French, German, Japanese and Spanish

- Extensive multi-media technical resources to help you
- We investigate all quality concerns to ensure our products perform to the highest standards

If the product does not perform as described on this datasheet, we will offer a refund or replacement. For full details of the Abpromise, please visit <https://www.abcam.com/abpromise> or contact our technical team.

Terms and conditions

- Guarantee only valid for products bought direct from Abcam or one of our authorized distributors